

U.S. PUBLIC LAND SURVEY MONUMENT RECORD

For Public Land Survey Corners In:

WI ADMINISTRATIVE CODE A-E 7.08 REQUIREMENT

T. 4 N. R. 14 E. 4th P.M.

REV 10/23/2004

USMONREC.DWG

CORNER CODE INDEX

L1m A TWP

ROCK COUNTY WI

IF AVAILABLE

ROCK COUNTY COORDINATES PREFERRED

A	1	2	3	4	5	6	7	8	9	10	11	12	13	14	15	16	17	18	19	20	21	22	23	24	25	A
B						6																				B
C							5																			C
D								4																		D
E									3																	E
F										2																F
G											1															G
H																										H
J																										J
K																										K
L																										L
M																										M
N																										N
O																										O
P																										P
Q																										Q
R																										R
S																										S
T																										T
U																										U
V																										V
W																										W
X																										X
Y																										Y
Z																										Z

North _____ Elev. _____

East _____

Hor. Datum _____ Vert. Datum _____

LATITUDE _____ ELLIPS. HT. _____

LONGITUDE _____

NAD83(91) _____ NETWORK ADJ. YR _____

GPS (X) _____ TRAVERSE (X) _____

BASED ON THE FOLLOWING CONTROL:

PLACE MONUMENT SYMBOL AT PROPER LOCATION ON ABOVE INDEX

CORNER MONUMENT

WITNESS MONUMENT

(a)

BEARINGS ARE BASED ON: _____

FIELD BOOK _____ PAGE # _____

SHEET 1 OF 1

SHOW A PLAN VIEW DRAWING DEPICTING THE CORNER MONUMENT AND SURROUNDING PHYSICAL FEATURES, INCLUDING THE EXCAVATION AREA AND DEPTH.

PLANNING & ZONING COMMITTEE ADOPTED THIS FORM ON 12/2/1982

CORNER CODE L-25 (3)

RECORD OF U. S. PUBLIC LAND SURVEY CONTROL STATION

U. S. PUBLIC LAND SURVEY CORNER 13 | 18 T 4 N, R 14/15 E, ROCK/WALWORTH COUNTY, WISCONSIN
13 | 18

HORIZONTAL CONTROL SURVEY BY: AYRES ASSOCIATES YEAR: 2004
 VERTICAL CONTROL SURVEY BY: AYRES ASSOCIATES YEAR: 2004

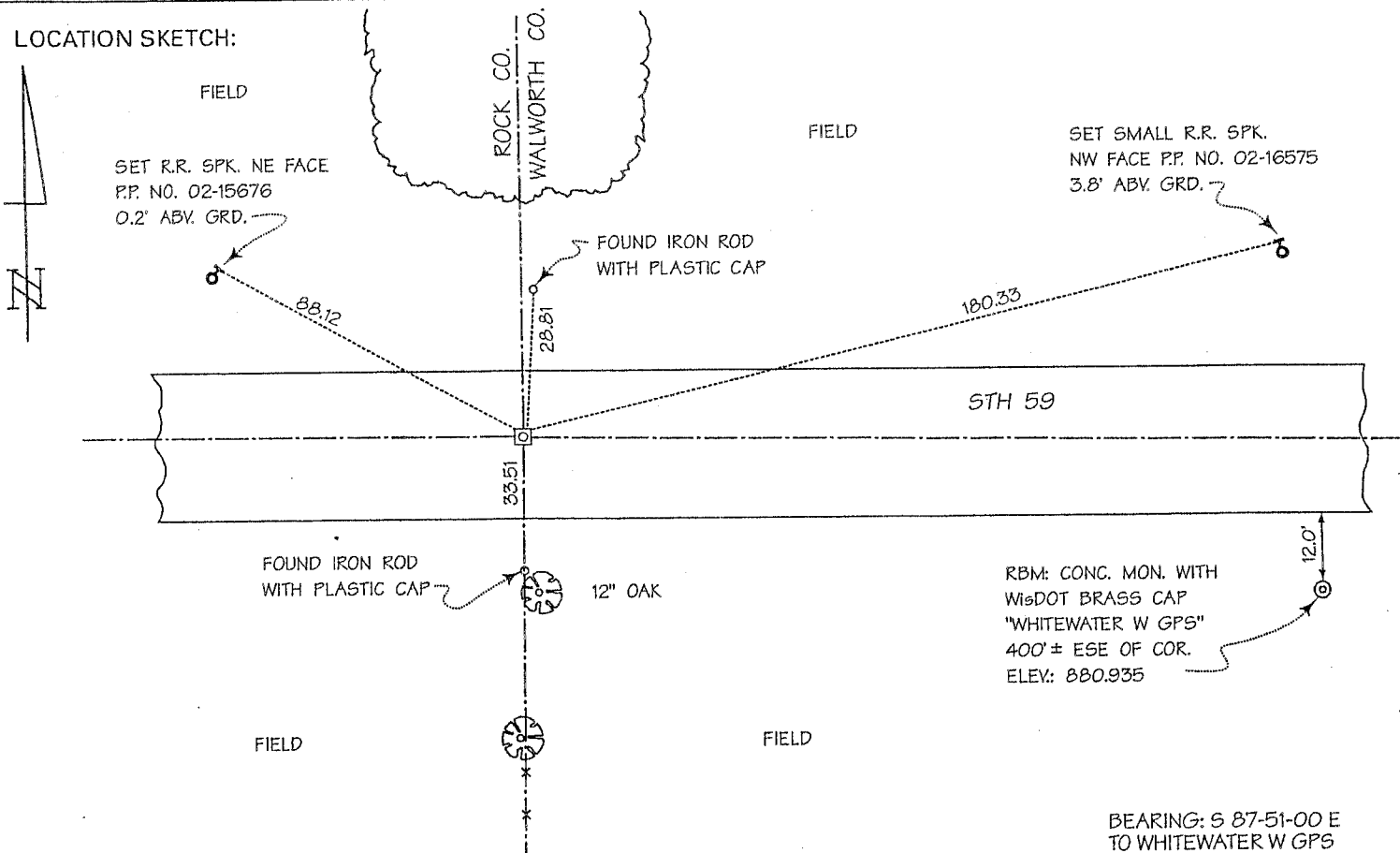
STATE PLANE COORDINATES OF: QUARTER SECTION CORNER
 NORTH 295,980.35
 EAST 2,328,068.66
 ELEVATION OF STATION: 863.634

HORIZONTAL DATUM: WISCONSIN STATE PLANE COORDINATE SYSTEM, SOUTH ZONE
 NORTH AMERICAN DATUM OF 1927

VERTICAL DATUM: NATIONAL GEODETIC VERTICAL DATUM OF 1929 THETA ANGLE: +0-50-23

CONTROL ACCURACY:
 HORIZONTAL: THIRD ORDER, CLASS I VERTICAL: SECOND ORDER, CLASS II

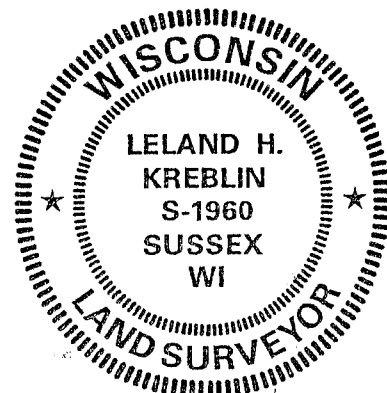
LOCATION SKETCH:



SURVEYOR'S AFFIDAVIT:

STATE OF WISCONSIN) SS
WALWORTH COUNTY)

As Walworth County Surveyor, I hereby certify that I found a concrete monument with Walworth County brass cap as set to mark this corner in July 1986 by Lloyd L. Jensen, S-211, Walworth County Surveyor; replacing a broken concrete monument, said monument with Walworth County brass cap having been set to mark this corner in August 1981 also by Mr. Jensen; replacing subsurface remnants of an old wood stake then marking this corner, said remnants having been found by Mr. Jensen to be located in the center of a circle formed by four eight-inch-diameter "hardhead" stones; that I referenced the same as shown hereon; and that this record is correct and complete to the best of my knowledge and belief.



DATE OF SURVEY: 16 JUNE 2004 Leland H. Kreblin S - 1960
 REVISED: 2 JUNE 2005 REGISTERED LAND SURVEYOR

L-25(3)