

U.S. PUBLIC LAND SURVEY MONUMENT RECORD

For Public Land Survey Corners In:

WI ADMINISTRATIVE CODE A-E 7.08 REQUIREMENT

T. 4 N. R. 15 E. 4th P.M.

REV 10/23/2004

USMONREC.DWG

CORNER CODE INDEX

LIMA TWP

ROCK COUNTY WI

IF AVAILABLE

ROCK COUNTY COORDINATES PREFERRED

North _____ Elev. _____

East _____

Hor. Datum _____ Vert. Datum _____

LATITUDE _____ ELLIPS. HT. _____

LONGITUDE _____

NAD83(91) _____ NETWORK ADJ. YR _____

GPS (X) _____ TRAVERSE (X) _____

BASED ON THE FOLLOWING CONTROL:

A	2	3	4	5	6	7	8	9	10	11	12	13	14	15	16	17	18	19	20	21	22	23	24	25	A
B		6			5				4				3				2			1					B
C																									C
D																									D
E																									E
F																									F
G																									G
H																									H
J																									J
K																									K
L																									L
M																									M
N																									N
O																									O
P																									P
Q																									Q
R																									R
S																									S
T																									T
U																									U
V																									V
W																									W
X																									X
Y																									Y
Z																									Z

PLACE MONUMENT SYMBOL AT PROPER LOCATION ON ABOVE INDEX

CORNER MONUMENT

WITNESS MONUMENT

(a)

BEARINGS ARE BASED ON: -----

FIELD BOOK _____ PAGE # _____

SHEET 1 OF 1

SHOW A PLAN VIEW DRAWING DEPICTING THE CORNER MONUMENT AND SURROUNDING PHYSICAL FEATURES, INCLUDING THE EXCAVATION AREA AND DEPTH.

PLANNING & ZONING COMMITTEE ADOPTED THIS FORM ON 12/2/1982

CORNER CODE P-25 (1)

RECORD OF U. S. PUBLIC LAND SURVEY CONTROL STATION

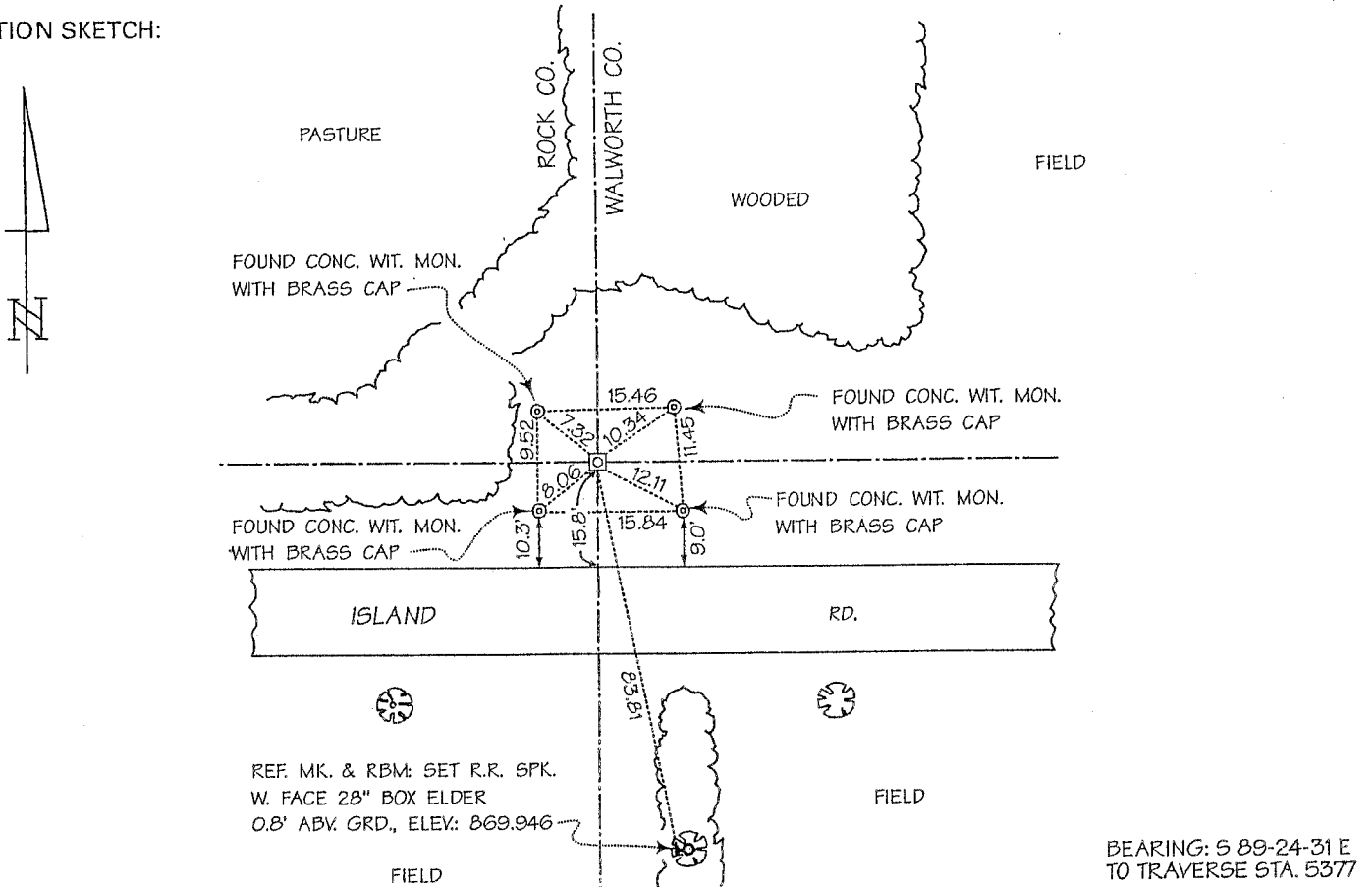
U. S. PUBLIC LAND SURVEY CORNER 24/19 T 4 N, R 14/15 E, ROCK/WALWORTH COUNTY, WISCONSIN
 HORIZONTAL CONTROL SURVEY BY: AYRES ASSOCIATES YEAR: 2004
 VERTICAL CONTROL SURVEY BY: AYRES ASSOCIATES YEAR: 2004
 STATE PLANE COORDINATES OF: QUARTER SECTION CORNER
 NORTH 290,696.47
 EAST 2,328,018.88
 ELEVATION OF STATION: 869.268

HORIZONTAL DATUM: WISCONSIN STATE PLANE COORDINATE SYSTEM, SOUTH ZONE
 NORTH AMERICAN DATUM OF 1927

VERTICAL DATUM: NATIONAL GEODETIC VERTICAL DATUM OF 1929 THETA ANGLE: +0-50-22

CONTROL ACCURACY:
 HORIZONTAL: THIRD ORDER, CLASS I VERTICAL: SECOND ORDER, CLASS II

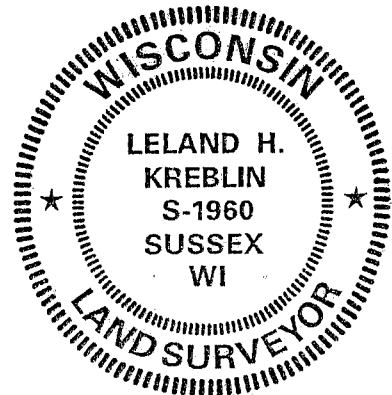
LOCATION SKETCH:



SURVEYOR'S AFFIDAVIT:

STATE OF WISCONSIN) SS
WALWORTH COUNTY)

As Walworth County Surveyor, I hereby certify that I found a concrete monument with Walworth County brass cap as set to mark this corner in October 1997 by Lloyd L. Jensen, S-211, Walworth County Surveyor; replacing a broken cast iron monument, said cast iron monument having been set to mark this corner in May 1983 by Donald A. Barnes, S-1216, Rock County Surveyor, using single proportionate measurement between the northeast and southeast corners of Section 24, Township 4 North, Range 14 East; that I referenced the same as shown hereon; and that this record is correct and complete to the best of my knowledge and belief.



DATE OF SURVEY: 14 JUNE 2004
 REVISED: 3 JUNE 2005

Leland H. Kreblyn
 REGISTERED LAND SURVEYOR

S - 1960

P-25(1)