

MICROFILMED PLAT AND RECORD

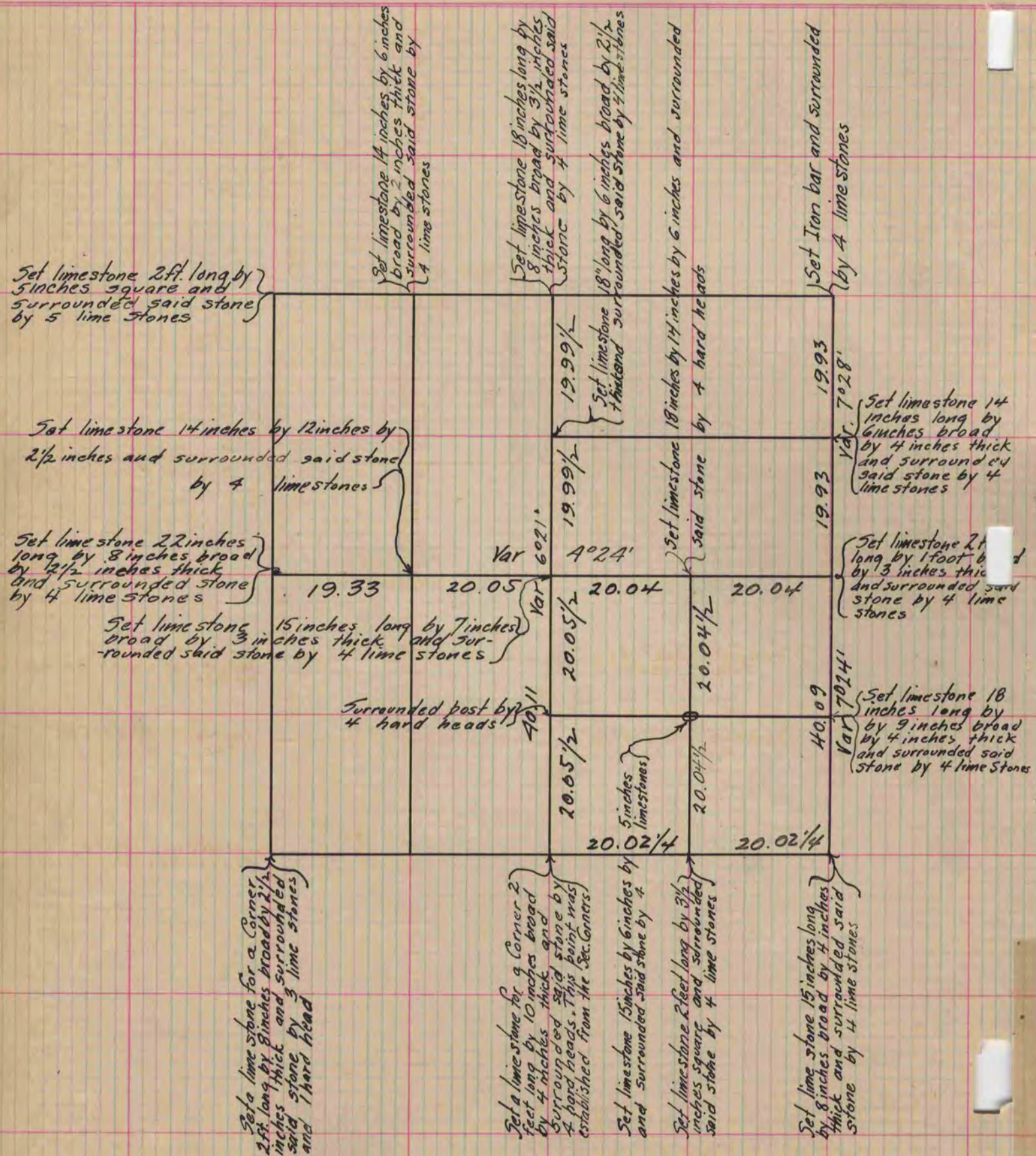
Of a Survey on Section 30 T 2 R 14 E. of the 4 P. M. in Bradford Township
Rock County, Wisconsin, made October the 18th & 19th 1859

I hereby certify that the following is a correct record of said survey as made by me.

COUNTY BUILDING
CITY OF JANESVILLE

(Signed) Edward Ruger
R.H.B.

County Surveyor.



Copied from Page 123 Vol. Original County Surveyors Record