

MICROFILMED PLAT AND RECORD

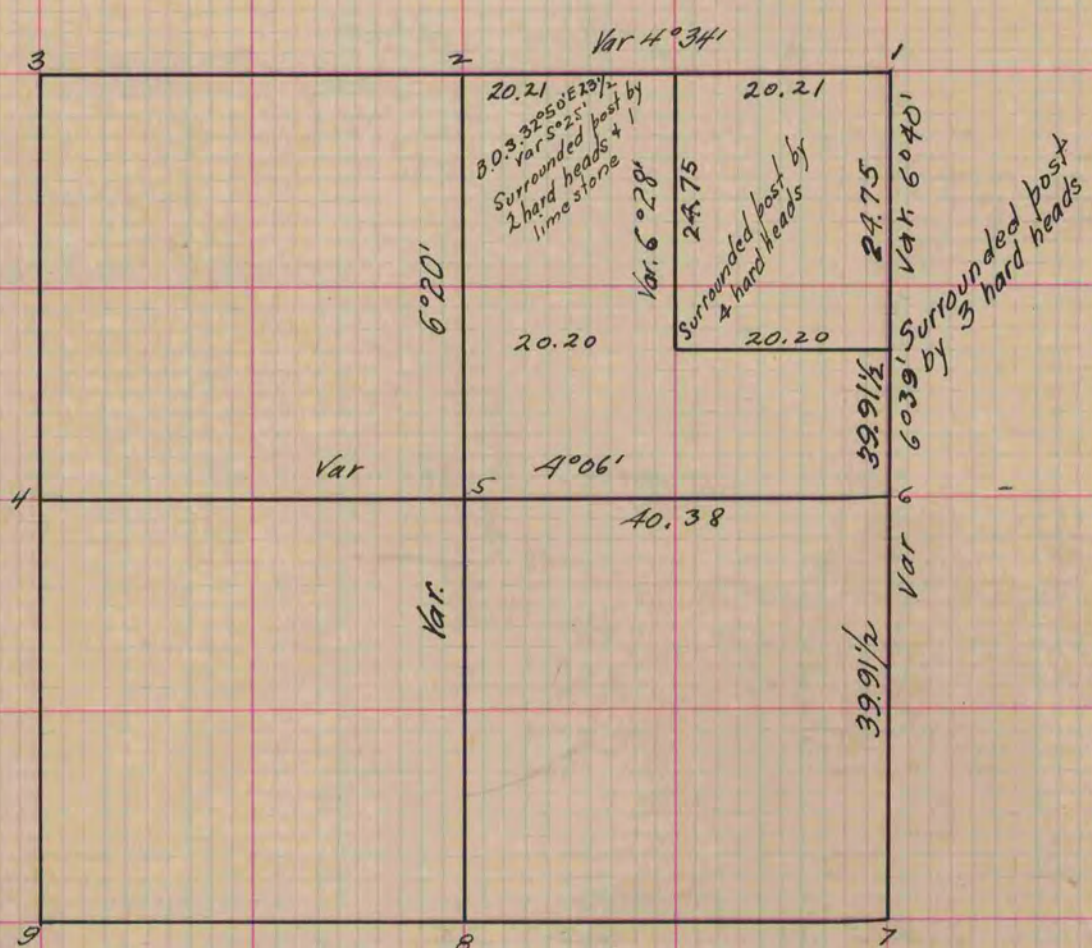
Of a Survey on Section 22 T 4 R 14 E. of the 4 P. M. in Lima Township
Rock County, Wisconsin, made June the 22nd 1859

I hereby certify that the following is a correct record of said survey as made by me.

COUNTY BUILDING
CITY OF JANESVILLE

(Signed) Edward Ruger
R.H.B. County Surveyor.

Distances given in chains
Variations marked on the lines



Surrounded post by
3 hard heads

At Fig. 2 took witness trees White Oak 20 S. 41°40' W. 71
Var. 6°20' Burr Oak 16 S. 73°25' E. 117

Sth P. by 3. hard heads & Fig. 4 Burr Oak 18 S. 0°20' E 86 Var 6°20'
Run the East and West Mile through the Sec on a Var 4°06'
by Forward and back Sights

Fig. 5 Black Oak S. 82°40' E 51 Black Oak 5 N. 30° W. 101 1/2
Surrounded post by 3 hardheads Var 6°20'

Fig. 6. Surrounded post by 3 hard heads

" 7 " " " " " "

" 8 " " " " " "

All traces of East 1/4 post being gone put it in from Sec. Corners

Copied from Page Page 113 Vol. 1. Original County Surveyors Record