

# PLAT AND RECORD

115  
V-5

COUNTY BUILDING  
CITY OF JANESVILLE

Of a Survey on Section 18 T 4 N R 12 E. of the 4 P. M. in FULTON Township

Rock County, Wisconsin, made JANUARY 13 1976

I hereby certify that the following is a correct record of said survey as made by me.

**MICROFILMED**

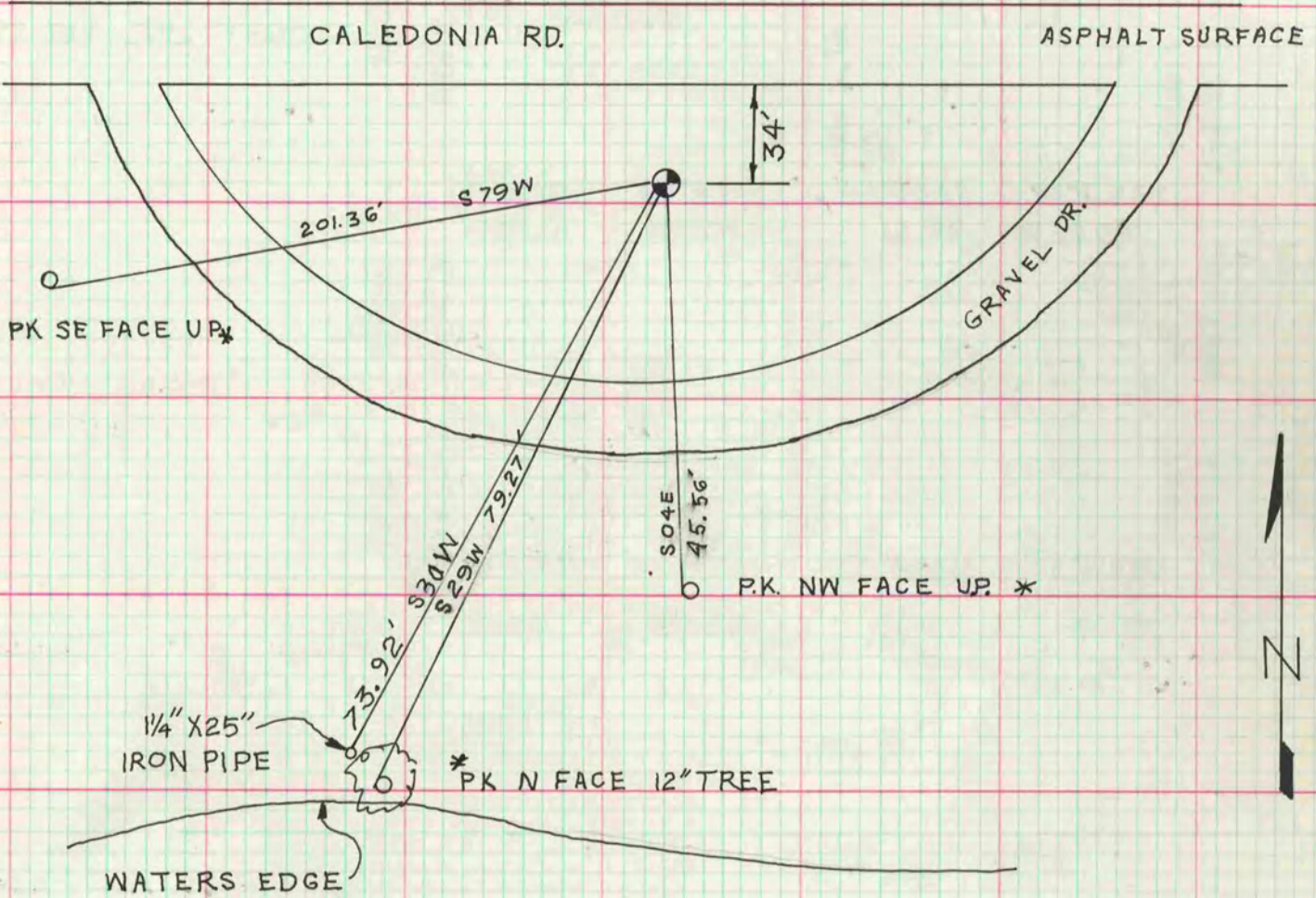
*Donald A. Baines*



County Surveyor.

W  $\frac{1}{4}$  COR

FD 1" PIPE WITH CAP (RLS 181)



\*NOTE: PK/BRASS FLASHER MARKED R.C.S.M.