

MICROFILMED

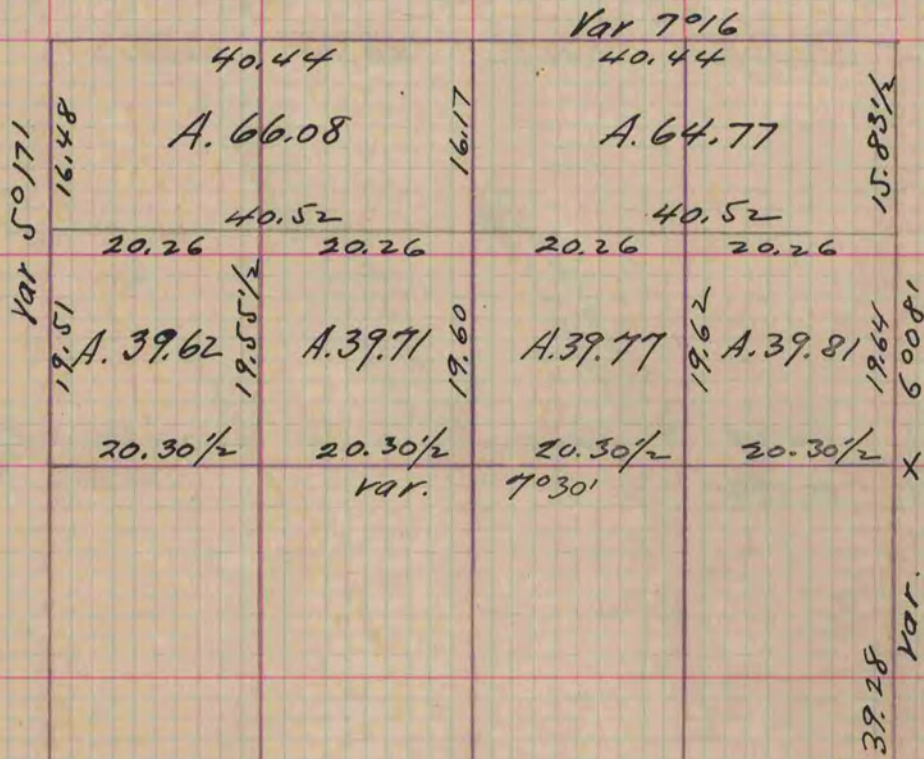
PLAT AND RECORD

Of a Survey on Section 3 T 2 R 10 E. of the 4 P. M. in Spring Valley Township
Rock County, Wisconsin, made January the 4th 1861

I hereby certify that the following is a correct record of said survey as made by me.

COUNTY BUILDING
CITY OF JANESVILLE

(Signed) Edward Ruger
R.H.B. County Surveyor.



X the East quarter post being gone put it in from the section Corners.

Copied from Page 159 Vol. 1. Original County Surveyors Record