

**MICROFILMED**

# PLAT AND RECORD

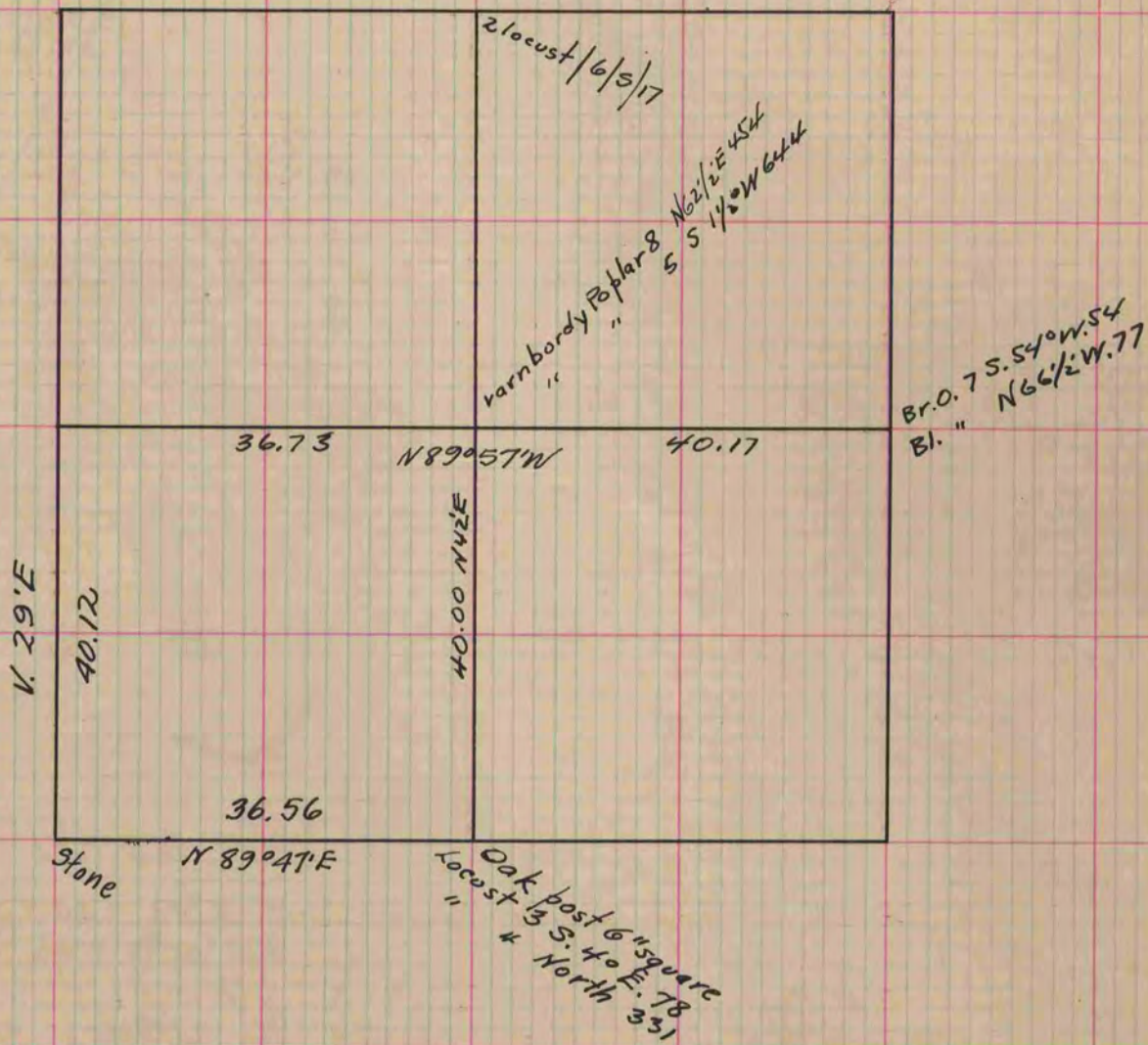
COUNTY BUILDING  
CITY OF JANESVILLE

Of a Survey on Section 19 T 1 R 13 E. of the 4 P. M. in Turtle Township

Rock County, Wisconsin, made May the 31<sup>st</sup> 1859

I hereby certify that the following is a correct record of said survey as made by me.

(Signed) E. F. Hobart  
(R.H.D.) Deputy County Surveyor.



Courses according to the true Meridian  
 Var. 5° 30'  
 Measurements in links  
 Notes of bearing trees established at the time of the Survey  
 are given on the plat.

Copied from Page 114 Vol. 1. Original County Surveyors Record.