

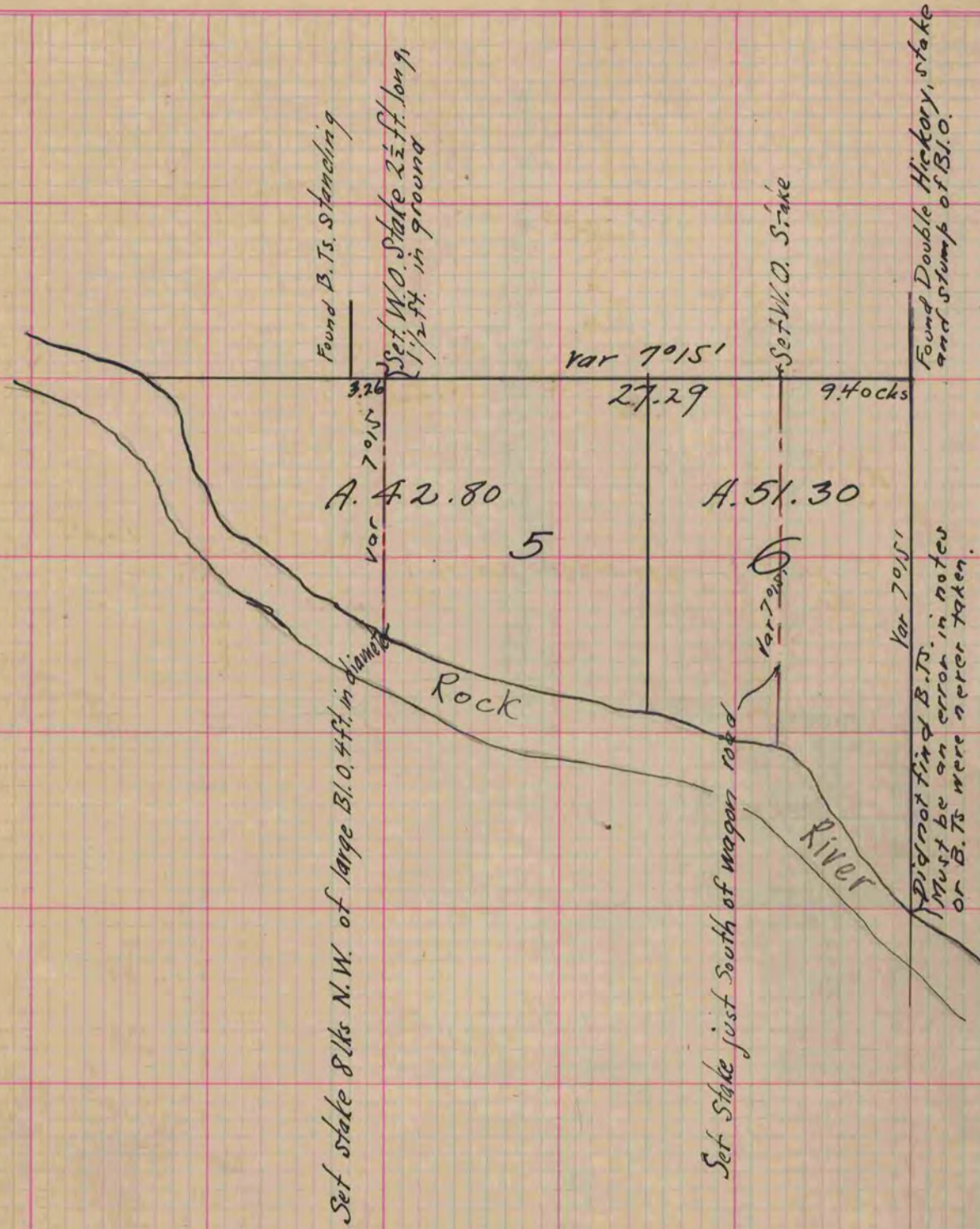
MICROFILM PLAT AND RECORD

Of a Survey on Section 9 T 3 R 12 E. of the 4 P. M. in Janesville Township
Rock County, Wisconsin, made February the 24th 1864

I hereby certify that the following is a correct record of said survey as made by me.

COUNTY BUILDING
CITY OF JANESVILLE

(Signed) J.D. Locke
R.H.B. County Surveyor.



Copied from lower part of Page 200 Vol. 1. Original County Surveyors Record