

# U.S. PUBLIC LAND SURVEY MONUMENT RECORD

For Public Land Survey Corners In:  
T. 4 N. R. 15 E. 4th P.M.

WI ADMINISTRATIVE CODE A-E 7.08 REQUIREMENT  
REV 10/23/2004 USMONREC.DWG

CORNER CODE INDEX

	1	2	3	4	5	6	7	8	9	10	11	12	13	14	15	16	17	18	19	20	21	22	23	24	25	
A																										A
B																										B
C																										C
D																										D
E																										E
F																										F
G																										G
H																										H
J																										J
K																										K
L																										L
M																										M
N																										N
O																										O
P																										P
Q																										Q
R																										R
S																										S
T																										T
U																										U
V																										V
W																										W
X																										X
Y																										Y
Z																										Z

LIMA TWP  
ROCK COUNTY WI

IF AVAILABLE  
ROCK COUNTY COORDINATES PREFERRED

North \_\_\_\_\_ Elev. \_\_\_\_\_

East \_\_\_\_\_

Hor. Datum \_\_\_\_\_ Vert. Datum \_\_\_\_\_

LATITUDE \_\_\_\_\_ ELLIPS. HT. \_\_\_\_\_

LONGITUDE \_\_\_\_\_

NAD83(91) \_\_\_\_\_ NETWORK ADJ. YR \_\_\_\_\_

GPS (X) \_\_\_\_\_ TRAVERSE (X) \_\_\_\_\_

BASED ON THE FOLLOWING CONTROL:

PLACE MONUMENT SYMBOL  AT PROPER LOCATION ON ABOVE INDEX

CORNER MONUMENT

WITNESS MONUMENT

(a)

BEARINGS ARE BASED ON:

FIELD BOOK \_\_\_\_\_ PAGE # \_\_\_\_\_

SHEET 1 OF 1

SHOW A PLAN VIEW DRAWING DEPICTING THE CORNER MONUMENT AND SURROUNDING PHYSICAL FEATURES, INCLUDING THE EXCAVATION AREA AND DEPTH.

PLANNING & ZONING COMMITTEE ADOPTED THIS FORM ON 12/2/1982

CORNER CODE X-25

**RECORD OF U. S. PUBLIC LAND SURVEY CONTROL STATION**

U. S. PUBLIC LAND SURVEY CORNER 36|31 T 4 N, R 14/15 E, ROCK/WALWORTH COUNTY, WISCONSIN  
36|31

HORIZONTAL CONTROL SURVEY BY: AYRES ASSOCIATES YEAR: 2004  
 VERTICAL CONTROL SURVEY BY: AYRES ASSOCIATES YEAR: 2004

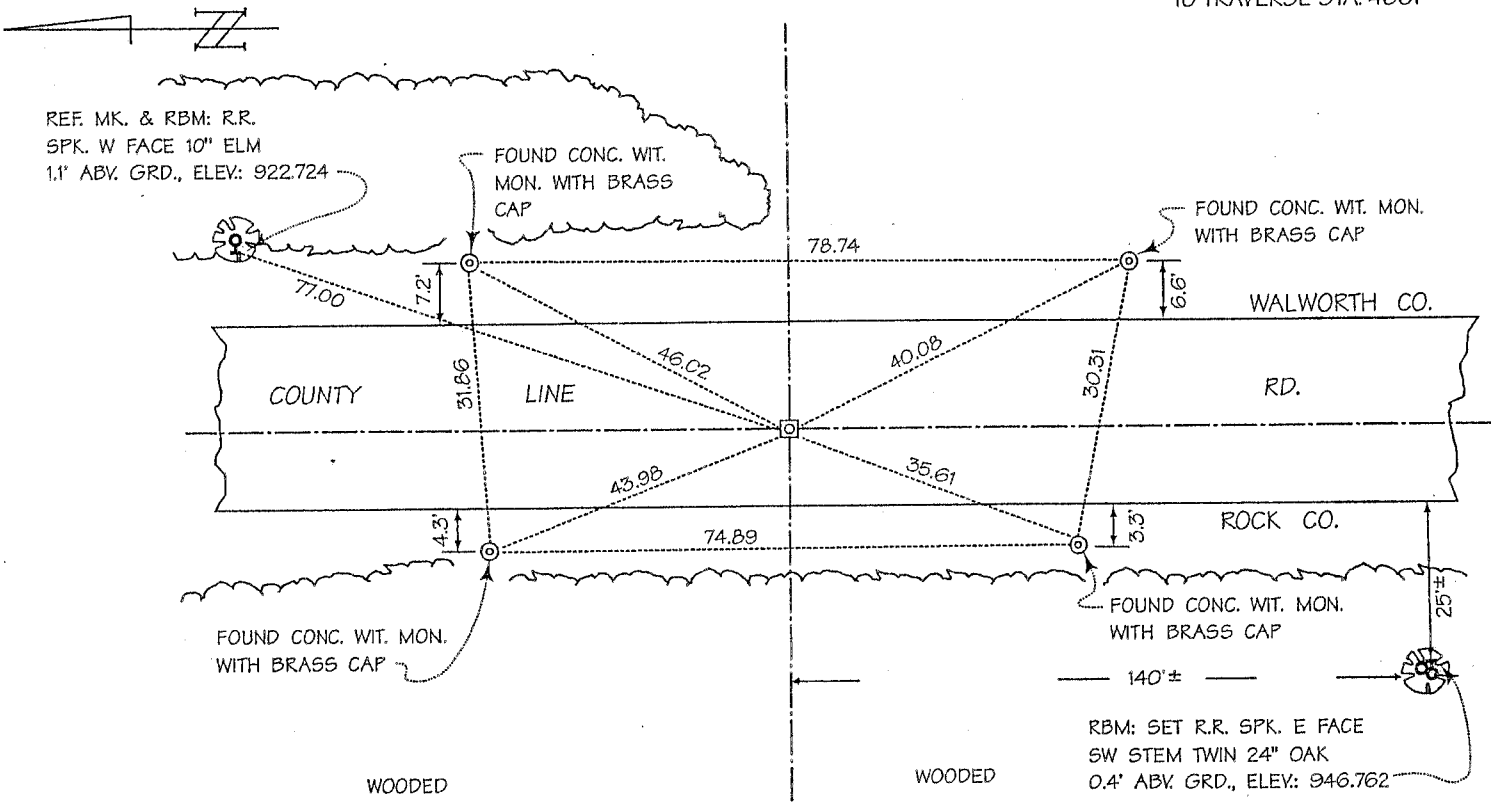
STATE PLANE COORDINATES OF: QUARTER SECTION CORNER  
 NORTH 280,116.94  
 EAST 2,327,975.19  
 ELEVATION OF STATION: 926.840

HORIZONTAL DATUM: WISCONSIN STATE PLANE COORDINATE SYSTEM, SOUTH ZONE  
 NORTH AMERICAN DATUM OF 1927

VERTICAL DATUM: NATIONAL GEODETIC VERTICAL DATUM OF 1929 THETA ANGLE: +0-50-20  
 CONTROL ACCURACY:  
 HORIZONTAL: THIRD ORDER, CLASS I VERTICAL: SECOND ORDER, CLASS II

LOCATION SKETCH:

BEARING: N 00-34-06 W  
 TO TRAVERSE STA. 4661



SURVEYOR'S AFFIDAVIT:

STATE OF WISCONSIN) SS  
WALWORTH COUNTY)

As Walworth County Surveyor, I hereby certify that I found a plastic monument with Rock County aluminum cap as set to mark this corner in July 1978 by Donald J. Barnes, S-1216, Rock County Surveyor; replacing a subsurface 17-inch by 17-inch by 9-inch "hard head" stone then marking this corner, said stone having been recorded as marking this corner in old records maintained by the Rock County Surveyor; that I referenced the same as shown hereon; and that this record is correct and complete to the best of my knowledge and belief.



DATE OF SURVEY: 6 MAY 2004  
 REVISED: 8 JUNE 2005  
 REGISTERED LAND SURVEYOR Leland H. Kreblin

S - 1960

+25