

# U.S. PUBLIC LAND SURVEY MONUMENT RECORD

For Public Land Survey Corners in:

WI ADMINISTRATIVE CODE A-E 7.08 REQUIREMENT

T. 4 N., R. 14 E

### CORNER CODE INDEX

A	1	2	3	4	5	6	7	8	9	10	11	12	13	14	15	16	17	18	19	20	21	22	23	24	25
B	6					9									3										1
C																									
D																									
E																									
F	1																								
G		8																							
H																									
I																									
J																									
K	18																								
L		17																							
M																									
N																									
O																									
P	19																								
Q		20																							
R																									
S																									
T	30																								
U		29																							
V																									
W																									
X	31																								
Y		32																							
Z																									

UMA TWP

ROCK COUNTY WI

IF AVAILABLE  
ROCK COUNTY COORDINATES PREFERRED

North \_\_\_\_\_ Elev. \_\_\_\_\_

East \_\_\_\_\_

Hor. Datum \_\_\_\_\_ Vert. Datum \_\_\_\_\_

LATITUDE \_\_\_\_\_ ELLIPS. HT. \_\_\_\_\_

LONGITUDE \_\_\_\_\_

GPS (X) \_\_\_\_\_ TRAVERSE (X) \_\_\_\_\_

BASED ON THE FOLLOWING CONTROL:

PLACE MONUMENT SYMBOL  AT PROPER LOCATION ON ABOVE INDEX

CORNER MONUMENT

WITNESS MONUMENT

(a)

BEARINGS ARE BASED ON:

FIELD BOOK \_\_\_\_\_ PAGE # \_\_\_\_\_

SHEET 1 OF 2

SHOW A PLAN VIEW DRAWING DEPICTING THE CORNER MONUMENT AND SURROUNDING PHYSICAL FEATURES, INCLUDING THE EXCAVATION AREA AND DEPTH.

PLANNING & ZONING COMMITTEE ADOPTED THE ABOVE FORM ON 12/2/1982

CORNER CODE E-25

LI533

(B) Describe any record evidence, monument evidence, occupational evidence, testimonial evidence or any other material evidence you considered, and whether the monument was found or placed.

1982 BARNES VOL 6 PG 245 FOUND BRASS CAP IN PAVEMENT. SET 3/8X32 BOLTS AS REFERENCE MONUMENTS. REFERENCE VOL 3, PG 456. FIELD BOOK; LIMA, PAGE 46.

FOUND WALWORTH COUNTY DISK IN CONCRETE 0.3' DEEP. DID NOT SEARCH FOR REFERENCE BOLT MONUMENTS. FOUND DISK IN CONCRETE WITH SURVEY SIGN FOR REFERENCE MONUMENTS. MONUMENT MAY BE DISTURBED BY *Road CONSTRUCTION*

C) Was the corner restored through acceptance of (1) an obliterated evidence location, or, (2) a found perpetuated location?

ACCEPTED FOUND PERPETUATED LOCATION.

D) Describe any material discrepancy between the location of the corner as restored or reestablished and the location of that corner as previously restored or reestablished by distance and direction. Show the discrepancy on the plan view drawing under (a), above. Show the distances between the corner as previously restored or reestablished and (1) the corner as restored or reestablished, and (2) to at least 4 of the witness monuments shown on the drawing in (a), above.

(E) Was the corner reestablished through lost corner proportionate methods? If so, show the method, including the directions and distances to other public land survey corners used as evidence or used for proportioning the corner location.

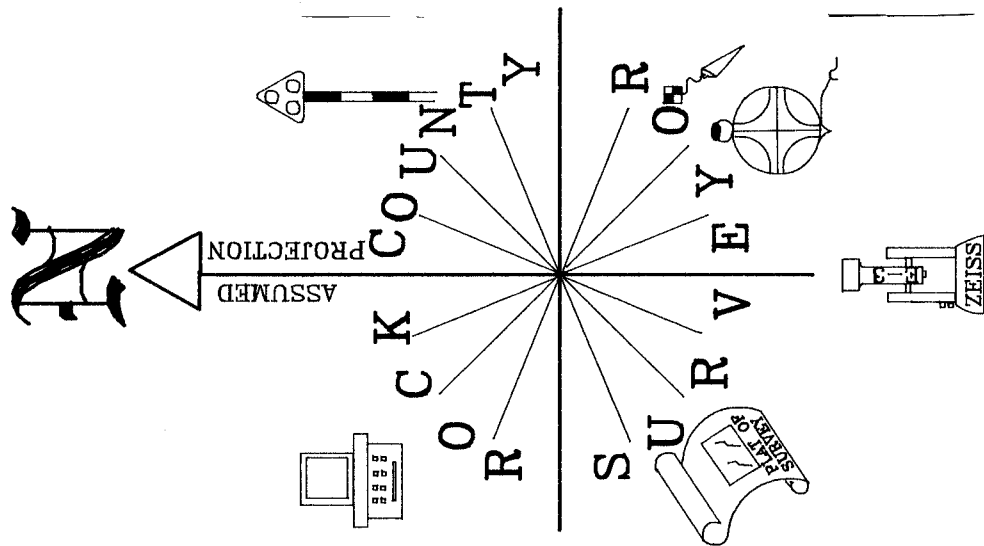
I, Donald Barnes, hereby certify that the corner location as identified by the corner code index was determined by me under my direction and control and that this U.S. Public Land Survey Monument Record is correct and complete to the best of my knowledge and belief.

*Donald Barnes*  
June 4 1999

emboss

Number of included sheets **1**

CORNER CODE **E-25**

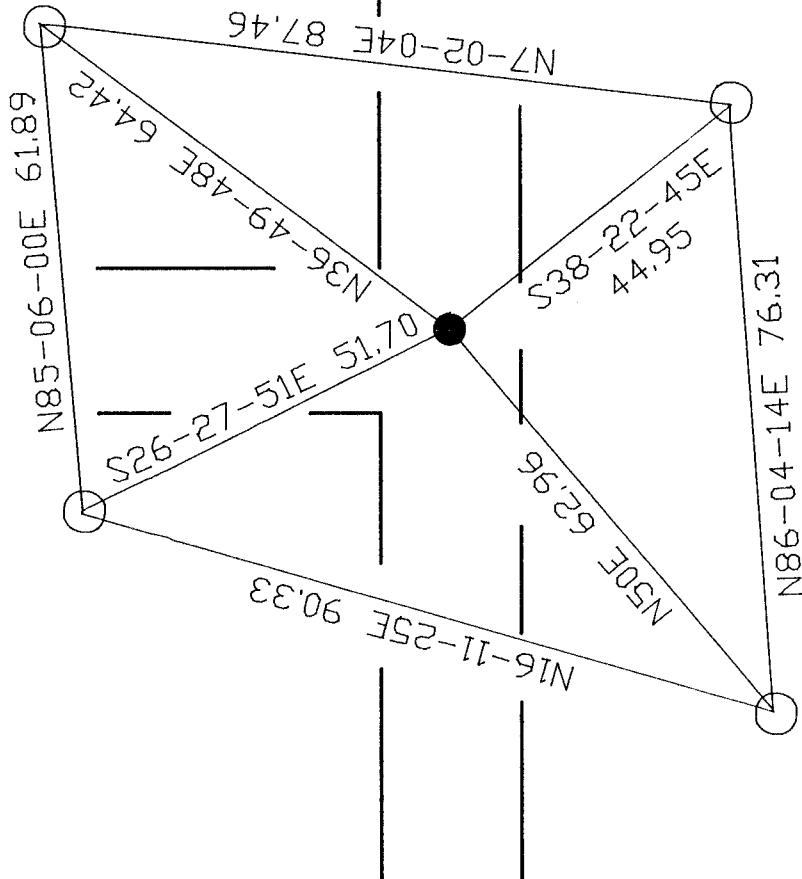


WARNER RD

SE COR  
SEC 1  
LIMA TWP

OBSERVATION SHEET

CTH N



- FD WALWORTH COUNTY  
DISK IN CONCRETE,  
0.3 DEEP
- WALWORTH COUNTY BRASS  
DISK IN CONCRETE  
WITH SURVEY SIGN

*Donald Barnes*  
EMBOSSSED SEAL  
May 28, 1999