

U.S. PUBLIC LAND SURVEY MONUMENT RECORD

For Public Land Survey Corners in the

T. A N., R. 14 E

CORNER CODE INDEX

LIMA TWP

ROCK COUNTY WI

A	1	2	3	4	5	6	7	8	9	10	11	12	13	14	15	16	17	18	19	20	21	22	23	24	25	26	27	28	29	30	31	32	33	34	35	36				
B																																								
C																																								
D																																								
E																																								
F																																								
G																																								
H																																								
I																																								
J																																								
K																																								
L																																								
M																																								
N																																								
O																																								
P																																								
Q																																								
R																																								
S																																								
T																																								
U																																								
V																																								
W																																								
X																																								
Y																																								
Z																																								

IF AVAILABLE
ROCK COUNTY COORDINATES PREFERRED


North _____ Elev. _____


East _____


Hor. Datum _____ Vert. Datum _____

GPS (x) _____ TRAVERSE (x) _____

BASED ON THE FOLLOWING CONTROL:

PLACE MONUMENT SYMBOL  AT PROPER LOCATION ON ABOVE INDEX

 CORNER MONUMENT

 WITNESS MONUMENT

(a)

BEARINGS ARE BASED ON:

FIELD BOOK _____ PAGE # _____

SHOW A PLAN VIEW DRAWING DEPICTING THE CORNER MONUMENT AND SURROUNDING PHYSICAL FEATURES, INCLUDING THE EXCAVATION AREA AND DEPTH. THE CORNER MONUMENT SHALL HAVE THE FOLLOWING CHARACTERISTICS: 1) HAVE A LEAST TWO PREDETERMINED BREAK-OFF POINTS. 2) IF BROKEN LEAVE A PERMANENTLY MAGNETIZED REMNANT AT THE ORIGINAL POINT. 3) MUST BE EXTENDABLE. 4) THE CAP IS INSCRIBED "ROCK COUNTY SURVEY MONUMENT - PENALTY FOR DISTURBING MARKER". 5) OR AN EXISTING CUT LIMESTONE, AN IRON PIPE 1 1/2" 4" MINIMUM MAY BE USED IN AREAS WHERE GROUND WATER IS WITHIN ONE FOOT OF THE SURFACE. IF THE CORNER IS OCCUPIED BY AN IMPROVEMENT (HOLE, BURIED CABLE, ETC) AND DURABLE, DISTINCT MONUMENT MAY BE USED. CORNERS SHALL BE REFERENCED WITH AT LEAST 4 DURABLE WITNESS MONUMENTS. WITNESS MONUMENTS SHALL BE MADE OF CONCRETE, NATURAL STONE, IRON OR OTHER EQUALLY DURABLE MATERIAL EXCEPT WOOD. DESCRIBE THE CORNER AND THE WITNESS MONUMENTS.

PLANNING & ZONING COMMITTEE ADOPTED THE ABOVE FORM ON 12/2/1992
WI ADMINISTRATIVE CODE A-E 7.08 REQUIREMENT

SHEET 1 OF 3

CORNER CODE

R7

LI584 S 1/4 COR SEC 20

(B) Describe any record evidence, monument evidence, occupational evidence, testimonial evidence or any other material evidence you considered, and whether the monument was found or placed.

1836 BURNHAM EAST RANDOM BETWEEN 20 & 29

4356 LEAVE WET PRAIRIE

5346 INT. EAST BDY AT STAKE

MOSTLY WET PRAIRIE

WEST MARKED LINE BETWEEN 29 & 20

2673 1/2 S IN MARSH NO BEARINGS

5346 TO CORNER

1886 RUGER VOL 2 PG 281 EST. COR CALLS FOR A VAR OF 3-05' & 2692.39' TO THE SE & SW CORNERS OF SEC 20 & 5324.72' TO THE N 1/4 COR SEC 20.

THERE IS A LOT OF WATER. RUGER'S VARIATION INDICATES THAT HE ESTABLISHED THE CORNER MIDWAY ON LINE BETWEEN THE SE & SW CORNERS OF SEC 20. I ESTABLISHED THE CORNER MIDWAY AND ON LINE BETWEEN THE SW & SE CORNERS OF SEC 20. THIS IS ALSO IN HARMONY WITH RUGER'S DISTANCE TO THE N 1/4 CORNER OF SEC 20. PLACED A BERNTSEN TOP SECURITY ROD THAT IS 9' LONG.

C) Was the corner restored through acceptance of (1) an obliterated evidence location, or, (2) a found perpetuated location?

THE CORNER WAS RESTORED THROUGH ACCEPTANCE OF OBLITERATED EVIDENCE LOCATION.

D) Describe any material discrepancy between the location of the corner as restored or reestablished and the location of that corner as previously restored or reestablished by distance and direction. Show the discrepancy on the plan view drawing under (a), above. Show the distances between the corner as previously restored or reestablished and (1) the corner as restored or reestablished, and (2) to at least 4 of the witness monuments shown on the drawing in (a), above.

(E) Was the corner reestablished through lost corner proportionate methods? If so, show the method, including the directions and distances to other public land survey corners used as evidence or used for proportioning the corner location.

NO

I, Donald Barnes, hereby certify that the corner points as identified by the corner code index were, in a field survey on, February 12, 1996, established, re-established, monumented, re-monumented, recovered or restored as expressed below and in conformance with the regulations and rules as required in the current manual of survey instructions of the United States Department of Interior, Bureau of Land Management.

Donald Barnes
seal
2/14/1996

COUNTY SURVEYOR FILING DATA

Date of computer entry _____

Date microfilmed _____

Number of included sheets 2

CORNER CODE

EMBOSS LAND SURVEYOR SEAL

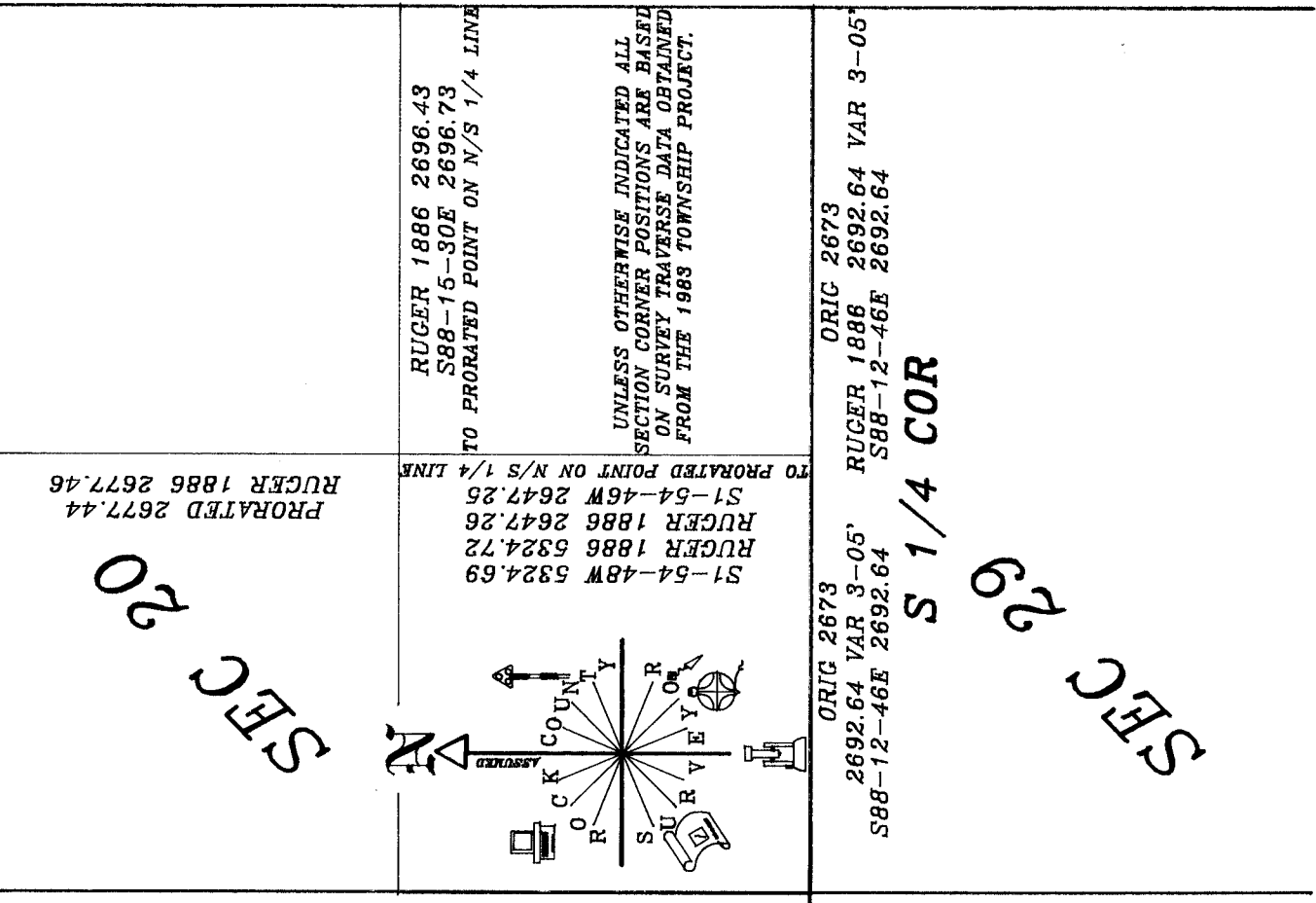
A-E 7.08 REQUIREMENT

N 1/4 COR
 ORIG 2682.44
 S87-45-53E 2708.67
 RUGER 1886 2706.66
 RUGER 1884 2705.78
 BARNES 1983 2708.67

ORIG 2682.44
 BLEEDHORN 1896 1340.12
 1341.17 BARNES 1983 1343.57
 BARNES 1983 2684.74

NW COR

NE COR



ORIG 2640
 RUGER 1884 2651.44
 BARNES 1983 2654.03
 N2-10-11E 2654.16

E 1/4 COR

BROWN 1900 2648.75
 BARNES 1983 2649.40
 ORIG 2640
 S2-00-04W 2649.41

SE COR

FD ALUM MON.

ORIG 2640
 BARNES 1983 2647.97
 S0-10-52E 2648.07

E 1/4 COR

FD ALUM MON.

SEC 20

SEC 29

W 1/4 COR

ORIG 2640

SEC 19

ORIG 2640
 N89-39-36W 2659.27

SW COR

S 1/4 COR

ORIG 2640
 S0-55-28E 2656.64

SEC 30

W 1/4 COR

FD ALUM MON

Donald Barnes
 2/14/1996

3 OF 3

R7