

PLAT AND RECORD

COUNTY BUILDING
CITY OF JANESVILLE

Of a Survey on Section 25, 20 T 4 R 11 E. of the 4 P. M. in PORTER Township

Rock County, Wisconsin, made MARCH the 31 1977

I hereby certify that the following is a correct record of said survey as made by me.

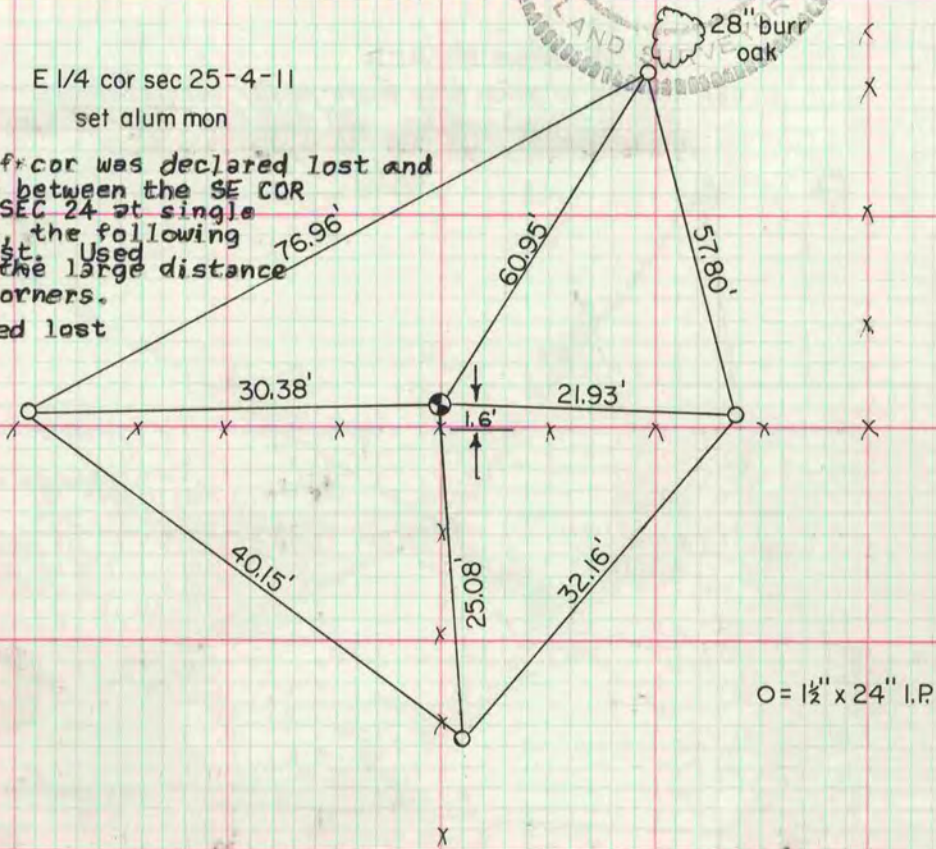
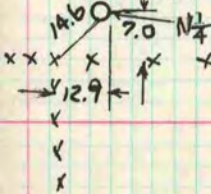


Donald Barnes
County Surveyor.

E 1/4 cor sec 25-4-11
set alum mon

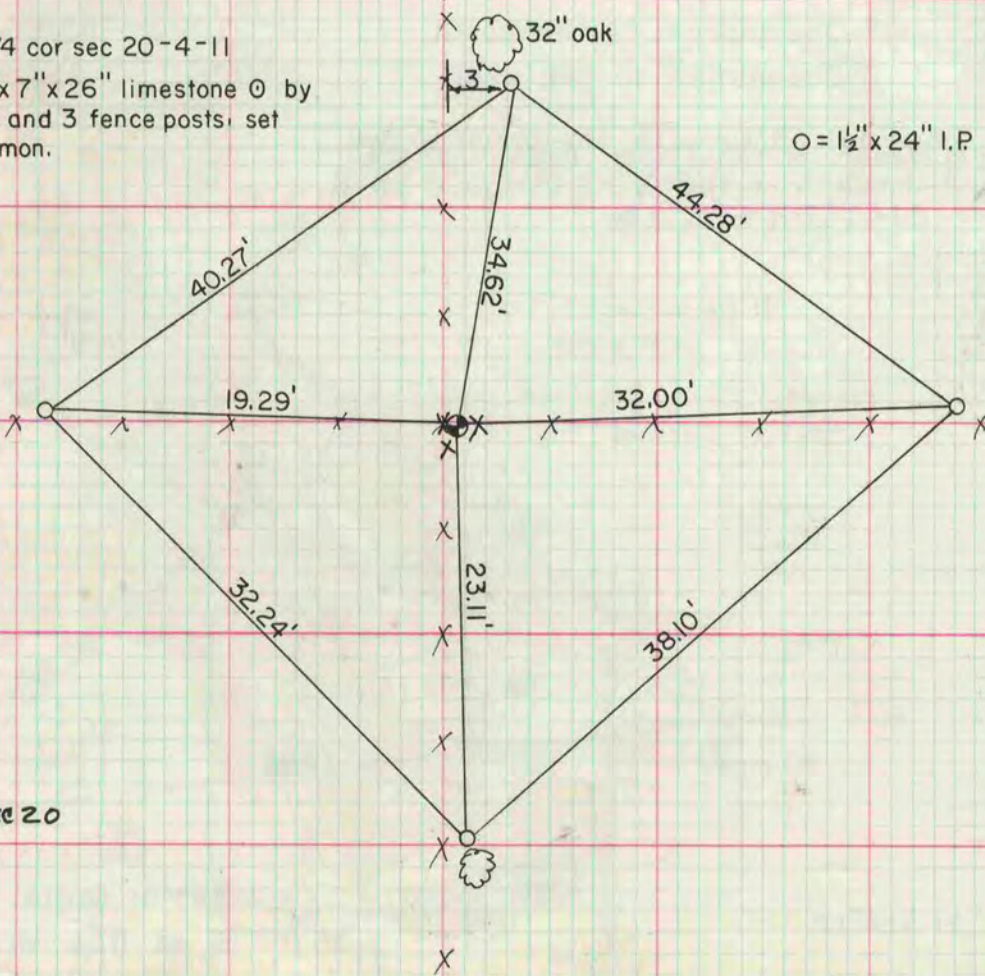
Dug and fd nothing. If cor was declared lost and set on a straight line between the SE COR SEC 25 and the E 1/4 COR SEC 24 at single proportionate distance, the following relationship would exist. Used occupation because of the large distance between the existing corners.

7.0 N 1/4 cor if declared lost



O = 1 1/2\" x 24\" I.P.

W 1/4 cor sec 20-4-11
fd 7\" x 7\" x 26\" limestone O by
1 H.H. and 3 fence posts, set
alum. mon.



O = 1 1/2\" x 24\" I.P.

W 1/4 20

REC 2673.91
COMPUTED 2674

RECORD 2654.52
EDM 2657

SW COR SEC 20

S 1/4 SEC 20

SW CORNER OF SEC 20

DUG & FOUND NOTHING. OCCUPATION WAS IN HARMONY WITH RECORD DISTANCE TO W 1/4 & S 1/4

COR OF SEC. SET ALUM MON

MICROFILMED