

PLAT AND RECORD

MICROFILMED

COUNTY BUILDING
CITY OF JANESVILLE

97
V-1

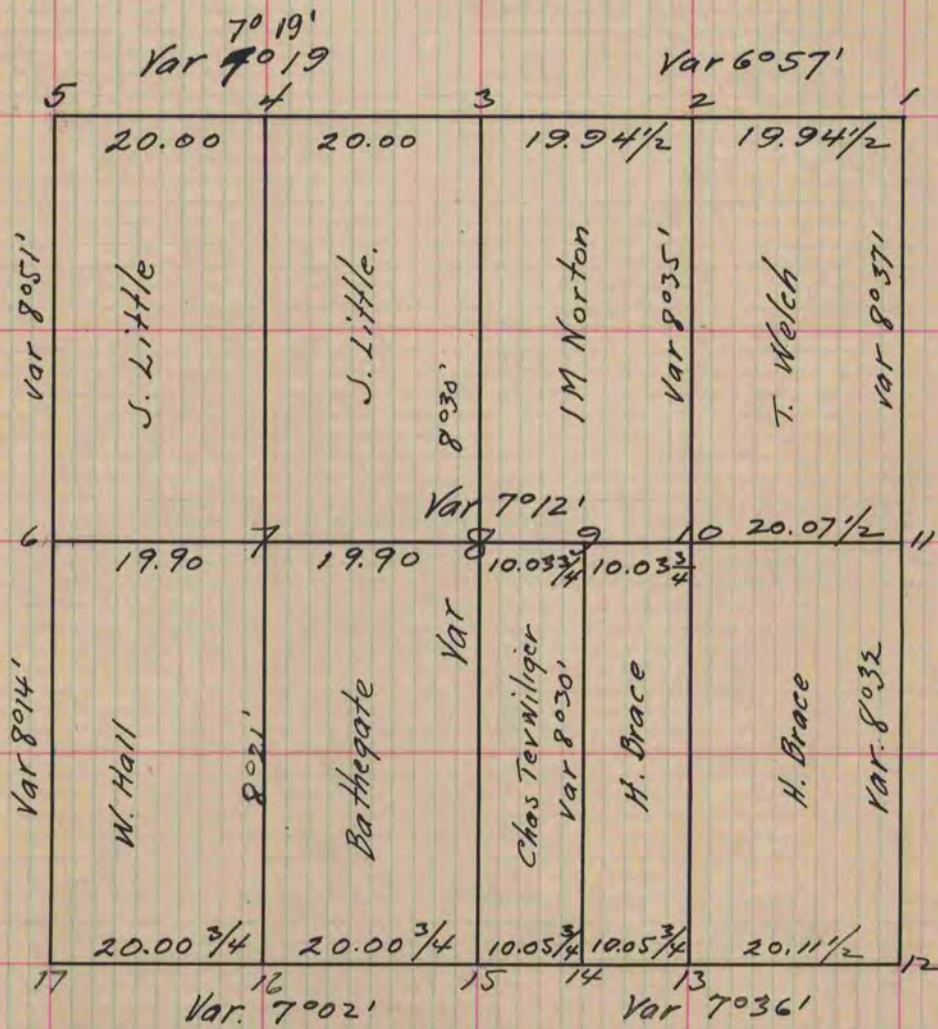
Of a Survey on Section 21 T 3 R 12 E. of the 4 P. M. in Janesville Township
Rock County, Wisconsin, made March the 21st & 22nd 1859

I hereby certify that the following is a correct record of said survey as made by me.

(Signed) Edward Ruger
R.H.B. County Surveyor.

For. Brace, Terwiliger, Hall, Batkegate, Little, Welch, Norton

Distances given in chains
Variations marked on the lines



- At Fig. 1 Old Witness Trees Standing Black Oak 12 S 31° W 15 - W. Oak 12 N 30° W. 104
- " " 2 took W.T. White Oak 30 N 65° 25' E 218 Var 8° 32'
- " " 3 old W.T. Standing Burr Oak 10 S 5° E 17 Burr Oak - S 40° W 37
- " " 4 took no bearings, Fig. 5 Old Witness Trees agreed as to distance but required a variation of 12° 40' to close on bearings
- " " 6 Old witness Trees Standing Red Oak 10 S 43° E 56 Br. Oak 6 N 10° W 21, Old W.T. being in highway took new ones Burr 7 N 79° 52' W 133 3/4, Burr Oak 5 N 84° 35' W. 137 Var 7° 30' & Var 8° 35'
- " " 7 White Oak 14 S 33° E 17 3/4 Var 7° 12'
- " " 8 White Oak 14 S 25° 27' E 62 1/2. W. O. 11 S 63° 38' - 78 1/4 W O 12 S 66° 35' W. 115
- " " 9 White Oak 22 S 7° 27' W 55 1/2 White Oak 11 S 44° 30' E. 80 1/4 Var 7° 12'
- " " 10 Black Oak 13 N 58° 25' E. 13 Fig 11. One Old W.T. Standing White Oak 24 S 43° E 2 Other W.T. cut down
- " " 12 Old W.Ts. Cut down. put in post from stumps and took W.T.s. R.O. 7 S 62° W. 117 R.O. 7 N 62° 12' W 130. R.O. 12 N 31° 56' E 202 Var 7° 45'
- " " 13 Locust 5 N 1° 15' W 54 3/4 Var 7° 36'
- " " 14 Locust 6 N 14° 25' E 57 1/2 Locust 6 N 45° 55' E. 80 1/4 Var 7° 36'
- " " 15 Old W.T. Red Oak 18 N 11° E 177 took new W.T. Bl. Oak 8 S 24° 05' W 151 1/4
- " " 16 Black Oak 6 S 0° 43' E 68 1/4 Var 7° 36'
- " " 17 Took W.T. R.O. 12 N 14° 37' E. 219 R.O. 10 N 22° 10' E 193 1/2 - cherry 8 N 18° 14' W 171 1/2 Var 7° 36'

Copied from Page 106 Vol. 1. Original County Surveyors Record.