

U.S. PUBLIC LAND SURVEY MONUMENT RECORD

For Public Land Survey Corners in the

T. 4 N., R. 14 E

CORNER CODE INDEX

LIMA TWP

ROCK COUNTY WI

A	1	2	3	4	5	6	7	8	9	10	11	12	13	14	15	16	17	18	19	20	21	22	23	24	25	26	27	28	29	30	31	32	33	34	35	36				
B																																								
C																																								
D																																								
E																																								
F																																								
G																																								
H																																								
I																																								
J																																								
K																																								
L																																								
M																																								
N																																								
O																																								
P																																								
Q																																								
R																																								
S																																								
T																																								
U																																								
V																																								
W																																								
X																																								
Y																																								
Z																																								

IF AVAILABLE
ROCK COUNTY COORDINATES PREFERRED


North _____ Elev. _____


East _____

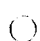
Hor. Datum _____ Vert. Datum _____

GPS (x) _____ TRAVERSE (x) _____

BASED ON THE FOLLOWING CONTROL:

PLACE MONUMENT SYMBOL  AT PROPER LOCATION ON ABOVE INDEX

 CORNER MONUMENT

 WITNESS MONUMENT

(a)

BEARINGS ARE BASED ON: _____

FIELD BOOK _____ PAGE # _____

SHOW A PLAN VIEW DRAWING DEPICTING THE CORNER MONUMENT AND SURROUNDING PHYSICAL FEATURES, INCLUDING THE EXCAVATION AREA AND DEPTH. THE CORNER MONUMENT SHALL HAVE THE FOLLOWING CHARACTERISTICS: 1) HAVE A LEAST TWO PREDETERMINED BREAK-OFF POINTS. 2) IF BROKEN LEAVE A PERMANENTLY MAGNETIZED REMNANT AT THE ORIGINAL POINT. 3) MUST BE EXTENDABLE. 4) THE CAP IS INSCRIBED "ROCK COUNTY SURVEY MONUMENT - PENALTY FOR DISTURBING MARKER" 5) OR AN EXISTING CUT LIMESTONE, AN IRON PIPE 1 1/2" 4" MINIMUM MAY BE USED 1) AREAS WHERE GROUND WATER IS WITHIN ONE FOOT OF THE SURFACE. IF THE CORNER IS OCCUPIED BY AN IMPROVEMENT (HANKOLE, BURIED CABLE, ETC) AND DURABLE, DISTINCT MONUMENT MAY BE USED. CORNERS SHALL BE REFERENCED WITH AT LEAST 4 DURABLE WITNESS MONUMENTS. WITNESS MONUMENTS SHALL BE MADE OF CONCRETE, NATURAL STONE, IRON OR OTHER EQUALLY DURABLE MATERIAL EXCEPT WOOD. DESCRIBE THE CORNER AND THE WITNESS MONUMENTS.

PLANNING & ZONING COMMITTEE ADOPTED THE ABOVE FORM ON 12/2/1982
WI ADMINISTRATIVE CODE A-E 7.09 REQUIREMENT

SHEET 1 OF 3

CORNER CODE

R5

1i583 SW COR SEC 20

(B) Describe any record evidence, monument evidence, occupational evidence, testimonial evidence or any other material evidence you considered, and whether the monument was found or placed.

1836 BURNHAM NORTH BETWEEN SECS 29 & 30
2640 SET 1/4 SEC POST
3036 TRAIL @ NW & SE
3168 ENTER WET PRAIRIE
5280 SET POST COR TO 19,20,29,&30 YELLOW OAK 18 N81W 448.14'
BUR OAK 12 N4 1/2E 733.92'

SOUTH HALF FIRST RATE BUR & YELLOW OAK OPENINGS-NORTH
HALF MOSTLY WET PRAIRIE

1836 BURNHAM EAST RANDOM LINE BETWEEN 20 & 29

4356 LEAVE WET PRAIRIE
5346 INT. EAST BDY AT STAKE

MOSTLY WET PRAIRIE
WEST MARKED LINE BETWEEN 29 & 20

2673' 1/4 S IN MARSH NO BEARINGS
5346 TO CORNER

1836 BURNHAM WEST RANDOM BETWEEN SEC 19 & 30

396 LEAVE WET PRAIRIE
528' TRAIL COURSE NW & SE
2524.5 STREAM 10 SW C SOUTH
3564 SAME STREAM @ NW
5010.72 INT RANGE LINE 23.76' NORTH

EAST CORRECTED BETWEEN 30 & 19
NO STATIONS

2370.72 SET 1/4 SEC POST
5010.72 TO CORNER

1836 BURNHAM NORTH BETWEEN SECTIONS 19 & 20

594' LEAVE WET PRAIRIE
1039.5 YELLOW OAK 16 IN. DI
1254 WET PRAIRIE
2640 SET 1/4 SEC POST BUR OAK 12 N2W 617.76'
3168 LEAVE WET PRAIRIE
4900.5' WHITE OAK 12 IN DIA
5280 SET POST COR TO 17,18,19,.& 20 (SET BTS)

1886 RUGER VOL 2 PG 281 FOUND POST ON COR. STAKE ABOUT 6" WEST ALSO
FOUND DECAYED REMAINS OF N.W.B.T. STUMP. CALLS FOR VAR 3-05'
2692.39' TO S 1/4 COR SEC 20.

AREA IS MARSH AND UNDER A LOT OF WATER. TOP OF FENCE POSTS ARE ABOUT 19" ABOVE THE ICE. FENCE INTERSECTION IS IN HARMONY WITH RUGER'S 1886 SURVEY AND THE ORIGINAL GOVERNMENT SURVEY DISTANCES. ACCEPTED FENCE LOCATION. PLACED A 9' LONG BERNTSEN TOP SECURITY ROD MONUMENT AT FENCE INTERSECTION.

C) Was the corner restored through acceptance of (1) an obliterated evidence location, or, (2) a found perpetuated location?
ACCEPTED FOUND PERPETUATED LOCATION

I, Donald Barnes, hereby certify that the corner points as identified by the corner code index were, in a field survey on, February 12, 1996, established, re-established, monumented, re-monumented, recovered or restored as expressed below and in conformance with the regulations and rules as required in the current manual of survey instructions of the United States Department of Interior, Bureau of Land Management.

COUNTY SURVEYOR FILING DATA

Date of computer entry _____

Date microfilmed _____

Number of included sheets 2

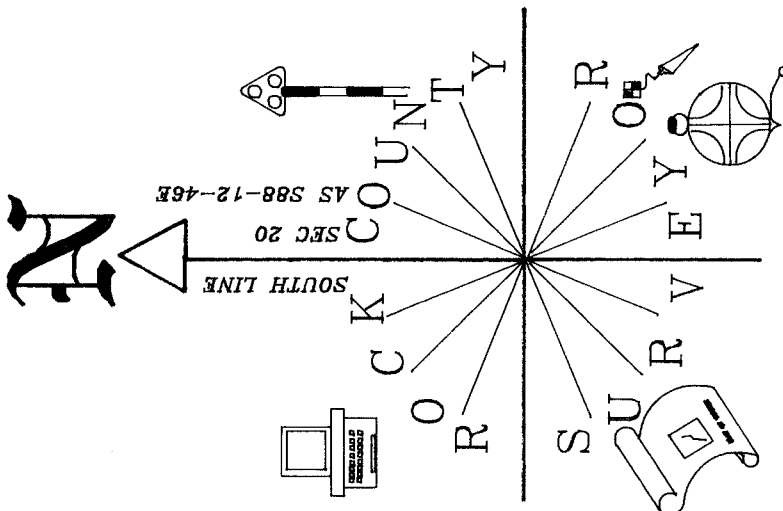
CORNER CODE

seal
Donald Barnes

2/14/96

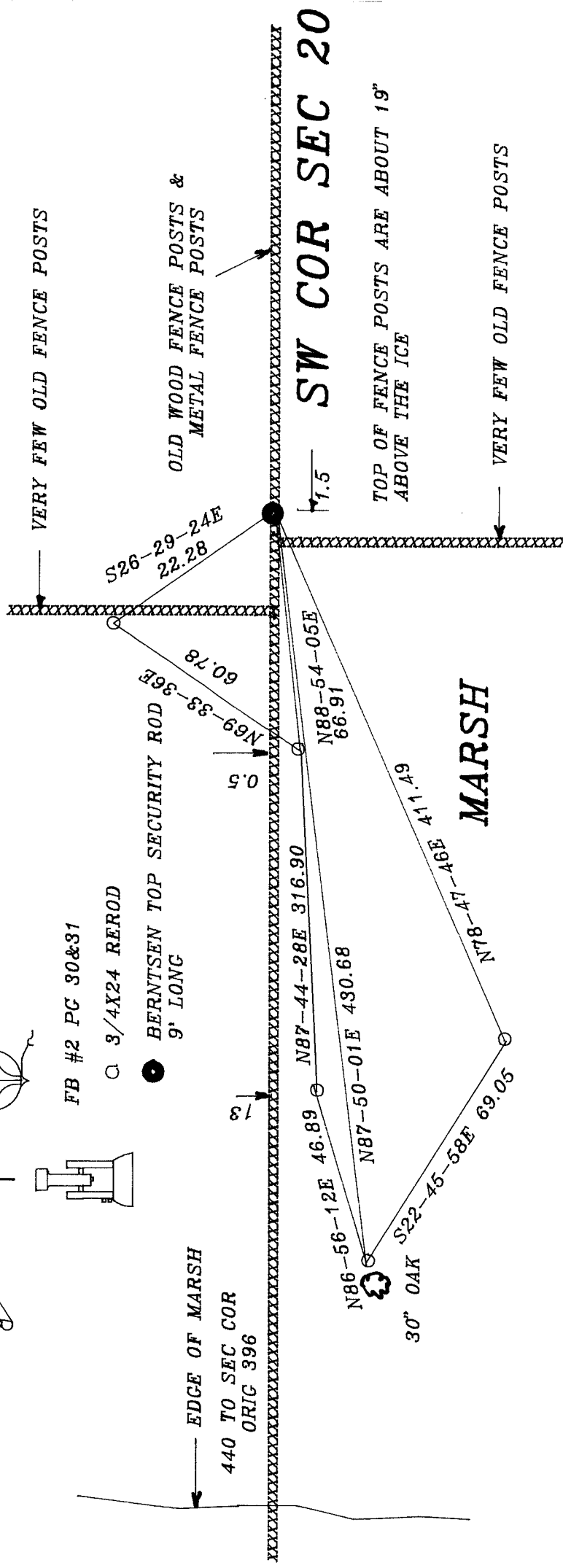
EMBOSS LAND SURVEYOR SEAL

A-E 7.08 REQUIREMENT



SOUTH LINE
AS S88-12-46E
SEC 20
CK COUNTY

FB #2 PG 30&31
3/4X24 REROD
BERNTSEN TOP SECURITY ROD
9' LONG



Donald Barnes
2/14/1996

2 OF 3

R5

N 1/4 COR ORIG 2682.44
 S87-45-53E 2708.67
 RUGER 1886 2706.66
 RUGER 1884 2705.78
 BARNES 1983 2708.67

NE COR

W 1/4 COR ORIG 2640

SW COR ORIG 2640

E 1/4 COR

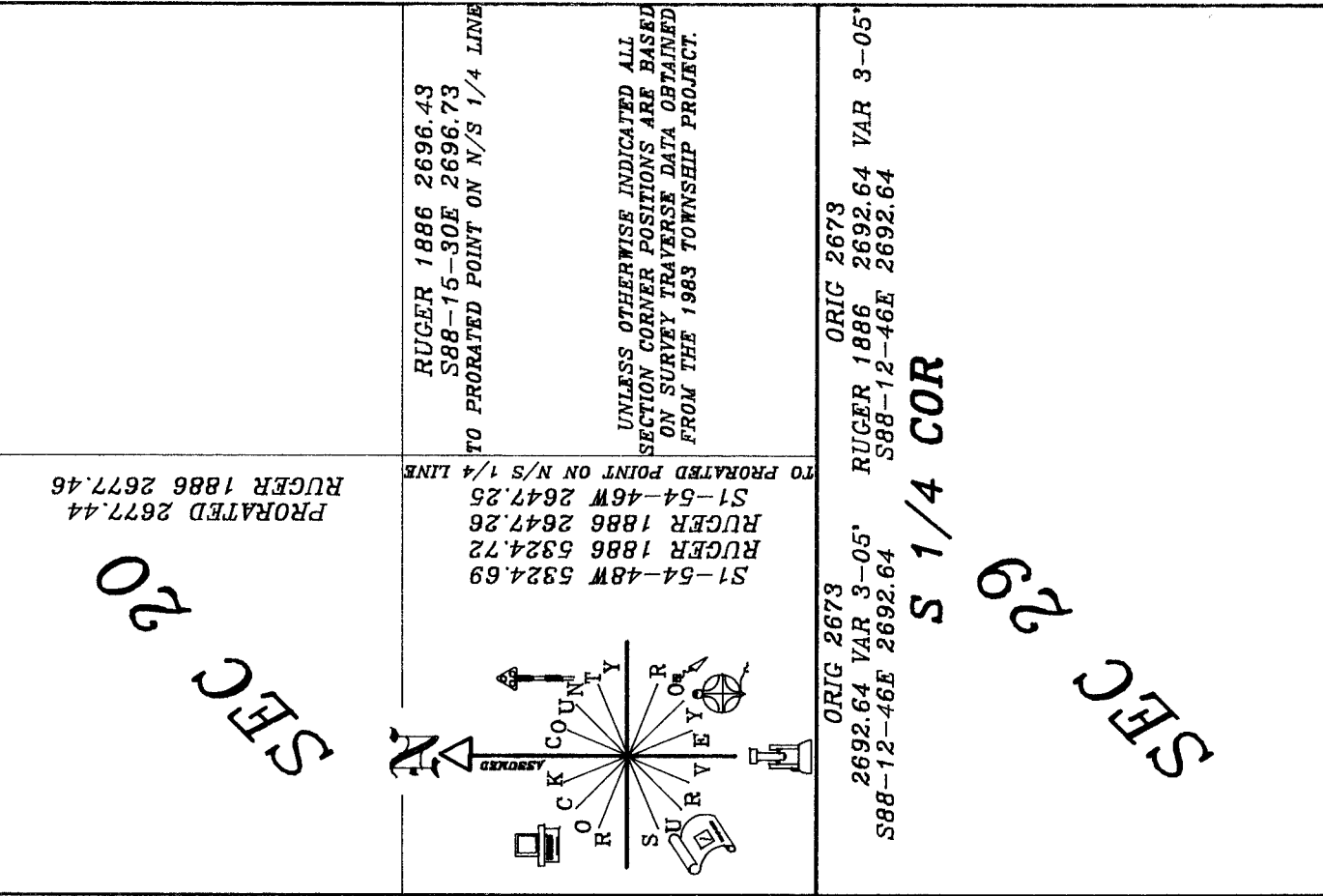
S 1/4 COR ORIG 2673
 2692.64 VAR 3-05*
 S88-12-46E 2692.64

SE COR FD ALUM MON.

NE COR ORIG 2640
 BARNES 1983 2647.97
 S0-10-52E 2648.07

SE COR FD ALUM MON.

E 1/4 COR FD ALUM MON.



Ronald Barnes
 2/14/1996

3 OF 3

R5