

U.S. PUBLIC LAND SURVEY MONUMENT RECORD

For Public Land Survey Corners in:

WI ADMINISTRATIVE CODE A-E 7.08 REQUIREMENT

T. 4 N., R. 14 E

CORNER CODE INDEX

A	1	2	3	4	5	6	7	8	9	10	11	12	13	14	15	16	17	18	19	20	21	22	23	24	25
B																									
C	6					5				4				3							2				1
D																									
E																									
F																									
G	1					8				9				10							11			12	
H																									
J																									
K																									
L	18					17				16				15							14			13	
M																									
N																									
O																									
P	19					20				21				22							23			24	
Q																									
R																									
S																									
T	30					29				28				27							26			25	
U																									
V																									
W																									
X	31					32				33				34							35			36	
Y																									
Z																									

LIMA TWP
ROCK COUNTY WI

IF AVAILABLE
ROCK COUNTY COORDINATES PREFERRED

North _____ Elev. _____

East _____

Hor. Datum _____ Vert. Datum _____

LATITUDE _____ ELLIPS. HT. _____


LONGITUDE _____

GPS (X) _____ TRAVERSE (X) _____

BASED ON THE FOLLOWING CONTROL:

PLACE MONUMENT SYMBOL  AT PROPER LOCATION ON ABOVE INDEX

 CORNER MONUMENT

 WITNESS MONUMENT

(a)

BEARINGS ARE BASED ON:

FIELD BOOK _____ PAGE # _____

SHEET 1 OF 2

SHOW A PLAN VIEW DRAWING DEPICTING THE CORNER MONUMENT AND SURROUNDING PHYSICAL FEATURES, INCLUDING THE EXCAVATION AREA AND DEPTH.

PLANNING & ZONING COMMITTEE ADOPTED THE ABOVE FORM ON 12/2/1982

CORNER CODE E-7(1)

LI524

(B) Describe any record evidence, monument evidence, occupational evidence, testimonial evidence or any other material evidence you considered, and whether the monument was found or placed.

1982 BARNES VOL 6 PG 250 FOUND IRON PIPE IN MON. BOX. REFERENCE VOL 4 PG 340 FIELD BOOK.; LIMA PAGE 43

1982 BARNES E-7 SET POLYSTYRENE MON. ROAD CONSTRUCTION NEW ASPHALT.

FD POLY. MON. WITH TOP BROKE OFF & 2 REFERENCE MON. ROAD CONSTRUCTION MAY DISTURB MONUMENT.

(C) Was the corner restored through acceptance of (1) an obliterated evidence location, or, (2) a found perpetuated location?

ACCEPTED FOUND PERPETUATED LOCATION.

(D) Describe any material discrepancy between the location of the corner as restored or reestablished and the location of that corner as previously restored or reestablished by distance and direction. Show the discrepancy on the plan view drawing under (a), above. Show the distances between the corner as previously restored or reestablished and (1) the corner as restored or reestablished, and (2) to at least 4 of the witness monuments shown on the drawing in (a), above.

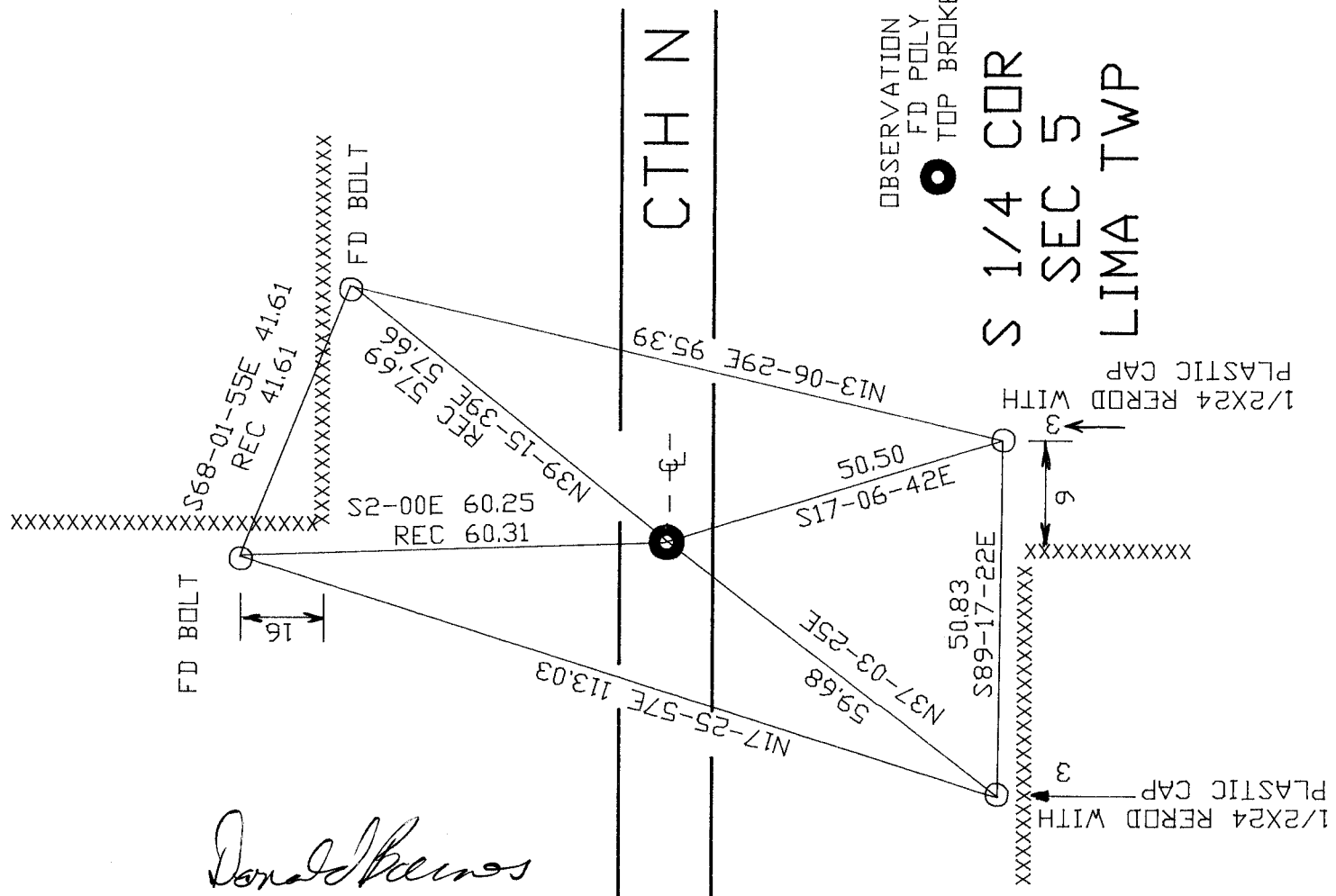
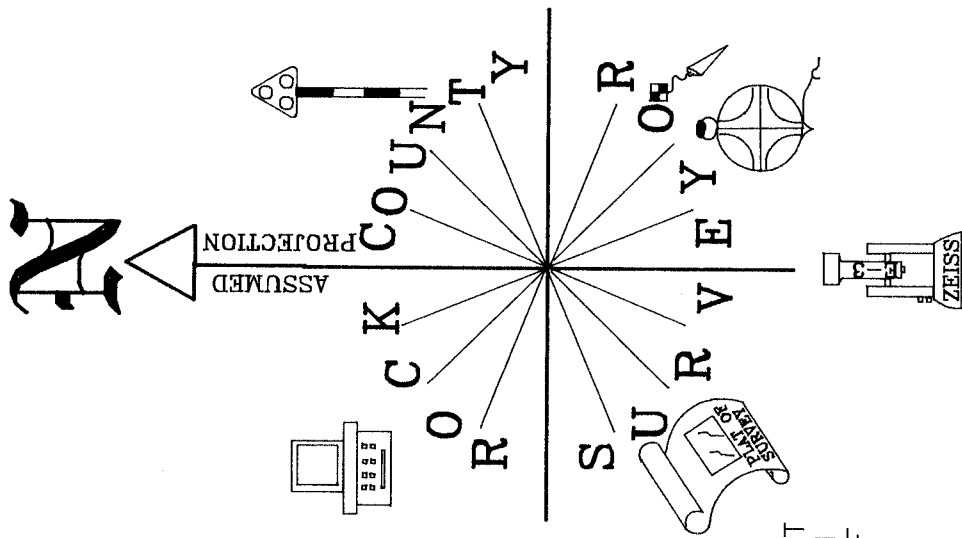
(E) Was the corner reestablished through lost corner proportionate methods? If so, show the method, including the directions and distances to other public land survey corners used as evidence or used for proportioning the corner location.

I, Donald Barnes, hereby certify that the corner location as identified by the corner code index was determined by me under my direction and control and that this U.S. Public Land Survey Monument Record is correct and complete to the best of my knowledge and belief.

seal
Donald Barnes
May 28, 1999
emboss

Number of included sheets **1**

CORNER CODE **E-7(1)**



OBSERVATION SHEET
 FD POLY WITH
 TOP BROKE OFF

S 1/4 COR
 SEC 5
 LIMA TWP

Donald Steinos
 EMBOSSED SEAL
 May 28, 1999

E-7(1)