

U.S. PUBLIC LAND SURVEY MONUMENT RECORD

For Public Land Survey Corners In:

WI ADMINISTRATIVE CODE A-E 7.08 REQUIREMENT

T. 4 N. R. 14 E.

CORNER CODE INDEX

1	2	3	4	5	6	7	8	9	10	11	12	13	14	15	16	17	18	19	20	21	22	23	24	25	
A																									A
B																									B
C																									C
D																									D
E																									E
F																									F
G																									G
H																									H
J																									J
K																									K
L																									L
M																									M
N																									N
O																									O
P																									P
Q																									Q
R																									R
S																									S
T																									T
U																									U
V																									V
W																									W
X																									X
Y																									Y
Z																									Z

PLACE MONUMENT SYMBOL AT PROPER LOCATION ON ABOVE INDEX

LIMA TWP

ROCK COUNTY WI

IF AVAILABLE
ROCK COUNTY COORDINATES PREFERRED

North _____ Elev. _____

East _____

Hor. Datum _____ Vert. Datum _____

LATITUDE _____ ELLIPS. HT. _____

LONGITUDE _____

GPS (X) _____ TRAVERSE (X) _____

BASED ON THE FOLLOWING CONTROL:

CORNER MONUMENT

WITNESS MONUMENT

BEARINGS ARE BASED ON: _____

FIELD BOOK _____ PAGE # _____

SHEET 1 OF 4

SHOW A PLAN VIEW DRAWING DEPICTING THE CORNER MONUMENT AND SURROUNDING PHYSICAL FEATURES, INCLUDING THE EXCAVATION AREA AND DEPTH.

PLANNING & ZONING COMMITTEE ADOPTED THE ABOVE FORM ON 12/2/1982

CORNER CODE V1 (3)

L1601

(B) Describe any record evidence, monument evidence, occupational evidence, testimonial evidence or any other material evidence you considered, and whether the monument was found or placed.

- 1871 RUGER REMONUMENTATION NOTES COMMENCED AT NE CORNER OF SECTION 36 (MILTON TWP) FOUND OLD STAKE WITH STONES NEAR IT. ALSO FOUND SW BEARING TREE. CALLS FOR 2640.83 TO S 1/4 CORNER OF SECTION 25, 2645.28 TO E 1/4 CORNER SECTION 25, 2643.30 E 1/4 CORNER SECTION 36 MILTON TOWNSHIP.
- 1871 RUGER VOL 2 PG 80 CALLS FOR STONE MONUMENT & 2437.88 TO S 1/4 CORNER OF SECTION 20.
- 1875 RUGER VOL 2 PG 198 CALLS FOR STONE MONUMENT.
- 1899 BROWN VOL 2 PG 509 CALLS FOR MONUMENT & 2640.00 TO S 1/4 COR SEC 25 MILTON TWP.
- 1962 BATTERMAN JR. VOL 4 PG 123 FOUND 1" PIPE & STATES CORNER IS 0.75 NORTH OF CENTER OF PVMT AND PLACED TIES.
- 1969 THOM PLAT OF SURVEY 2445.26 TO S 1/4 COR SEC 30
- 1982 BARNES V-1 FOUND 1" IRON PIPE, MONUMENT OF RECORD. SKETCH SHOWS COR. 0.5' NORTH OF CENTER OF STH 59 & ON LINE CENTER OF N/S PVMT. LIMA FIELD BOOK 1 PG 59 REFERENCED IN VOL 4 PG 123. COORDINATES 283,325.51; 2,296,352.39 ELEV 895'
- 1982 BARNES LIMA REMONUMENTATION FOUND 1" PIPE. CALLS FOR 2444.35 TO S 1/4 CORNER SEC 30, 2645.35 TO W 1/4 COR SECTION 31, 2648.51 TO W 1/4 CORNER SEC 30, 283,325.51; 2,296,352.39
- 1983 DOT R/W MAP FOUND IRON PIN; 283,327.04; 2,296,352.00; S1-14-51E 2644.18 (STATE PLANE) TO W 1/4 CORNER SECTION 31.
- 1983 WIDOT STH59 R/W PLANS PROJECT #3143-00-21 SHEET #4.8 CAST IRON MON 283,334.06; 2,291,061.64 3.15 PERPENDICULAR TO REF LINE AT STA 143+38.15 NO-21-52E
- 1983 BARNES MILTON TWP REMONUMENTATION 2642.90 TO S 1/4 CORNER SEC 25, 2643.30 TO E 1/4 COR SECTION 36, AND 2648.51 TO E 1/4 CORNER SECTION 25.
- 1985 DOT V-1(1) PLACED TIES AND STATES "1.92 _ TO REF. LINE (LT) 196+28.84. NOTE AT LOWER RT HAND CORNER-SECTION COR. REF.
- 1993 BARNES V-1(2) PLACED SMALL R/R SPIKE. CORNER RESTORED THROUGH ACCEPTANCE OF OBLITERATED EVIDENCE LOCATION. USED THE 1" PIPE REFERENCE MONUMENT TO THE NORTHEAST & THE BENT PIPE TO THE SE. THIS LOCATION IS IN HARMONY WITH DOT'S TIE TO THE NORTHWEST. INCLUDES A SKETCH PAGE OF WIDOT'S STATIONING & TWP PROJECT OBSERVATIONS.

IN FALL OF 2001 FD OLD & WIDOT TIES & SMALL R/R SPIKE 1.4' NORTH OF CENTER PVMT, 3 WEST OF EAST PVMT EDGE PROJECTED SOUTH ON LINE CENTER PVMT TO THE SOUTH. MON. WILL BE DESTROYED WITHIN A FEW MONTHS. IN APRIL 2002 FD TIES. USED TIES TO PLACE STEEL SURVEY SPIKE WITH THE FOLLOWING CAPTION ON TOP "SURVEY MARK".

Donald Barnes
5/15/02

SHEET 1 OF 4
V-1(3)

L1601

C) Was the corner restored through acceptance of (1) an obliterated evidence location, or, (2) a found perpetuated location?

ACCEPTED FD PERPETUATED LOCATION OF THE R/R SPIKE AS PLACED BEFORE.

D) Describe any material discrepancy between the location of the corner as restored or reestablished and the location of that corner as previously restored or reestablished by distance and direction. Show the discrepancy on the plan view drawing under (a), above. Show the distances between the corner as previously restored or reestablished and (1) the corner as restored or reestablished, and (2) to at least 4 of the witness monuments shown on the drawing in (a), above.

PREVIOUS TIES SHEET SHOWS A DISCREPANCY BETWEEN A R/R SPIKE AND A FD PK. DISTANCES TO ERRONEOUS PK ARE SHOWN.

(E) Was the corner reestablished through lost corner proportionate methods? If so, show the method, including the directions and distances to other public land survey corners used as evidence or used for proportioning the corner location.

NO

I, Donald Barnes, hereby certify that the corner location as identified by the corner code index was determined by me under my direction and control and that this U.S. Public Land Survey Monument Record is correct and complete to the best of my knowledge and belief.

Seal
Donald Barnes

Emboss

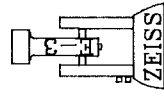
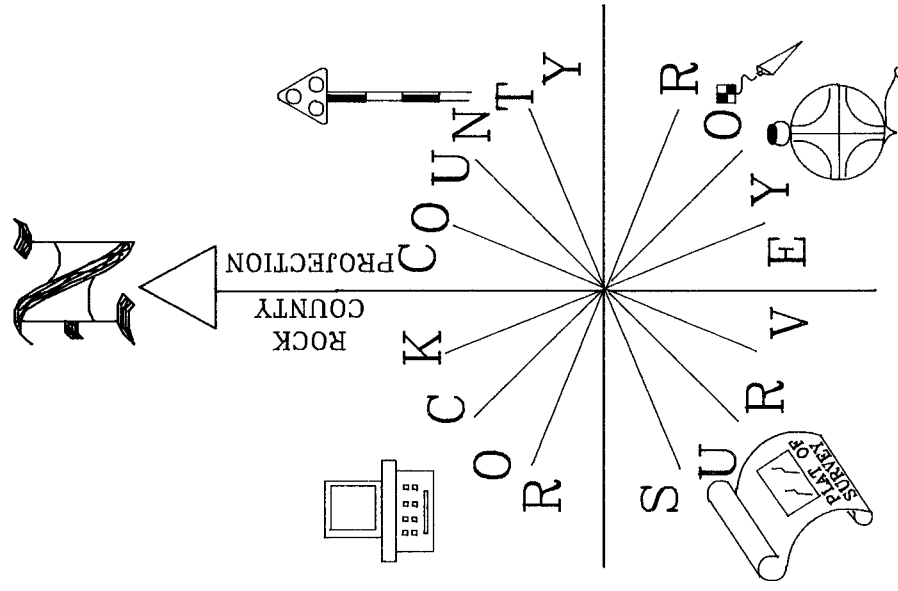
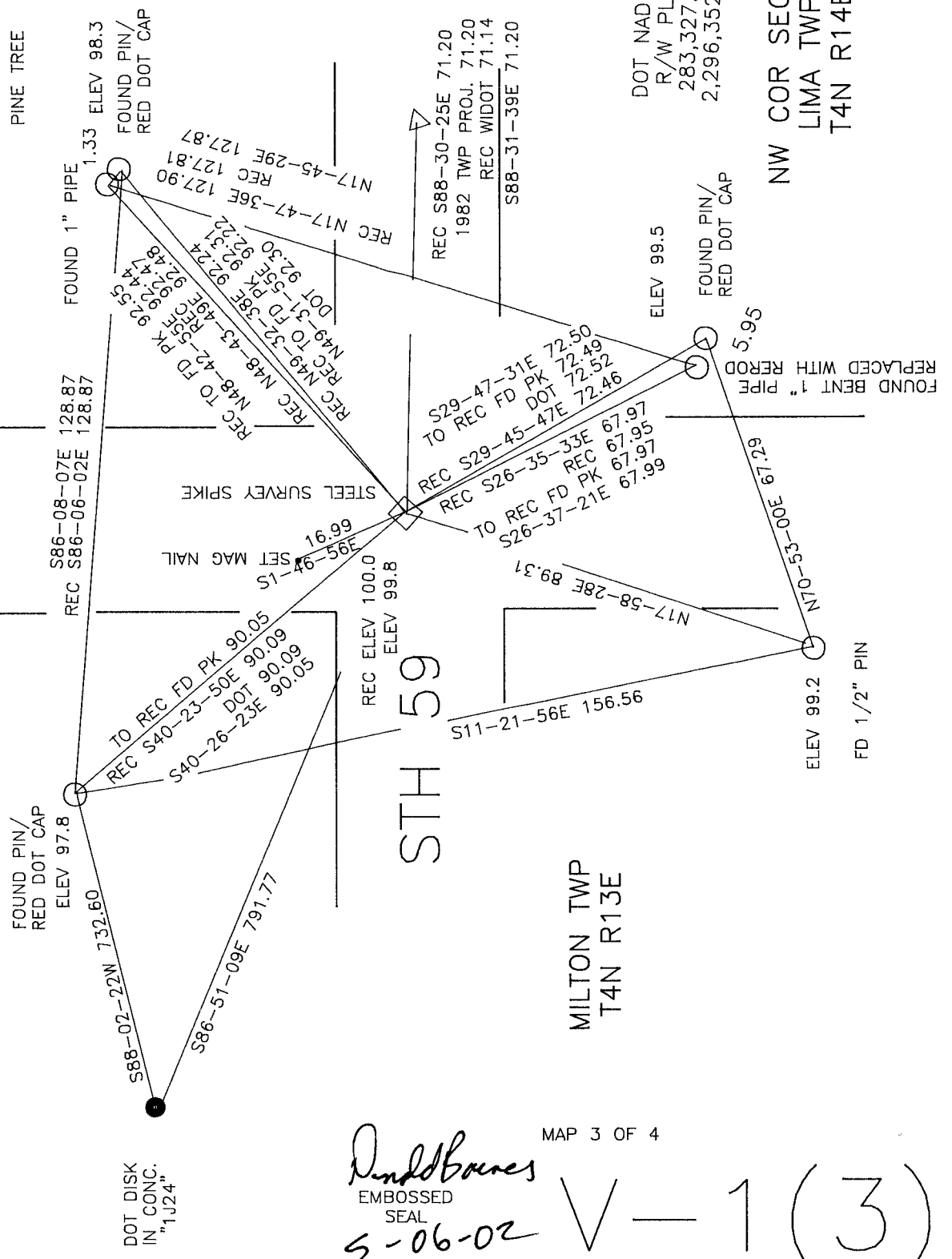
5-15/02

SHEET 2 OF 4

CORNER CODE
A.E. 7.08 REQUIREMENT

V-1(3)

VICKERMAN



NOT TO SCALE
OBSERVATION SHEET
ASSUMED ELEVATION DATUM

FOUND PK/FLASHER
PAINTED 196+99.98
IN 1982 TWP PROJ.
DOT 283,325.18
2,296,423.17

DOT NAD 27
R/W PLAT
283,327.04
2,296,352.00

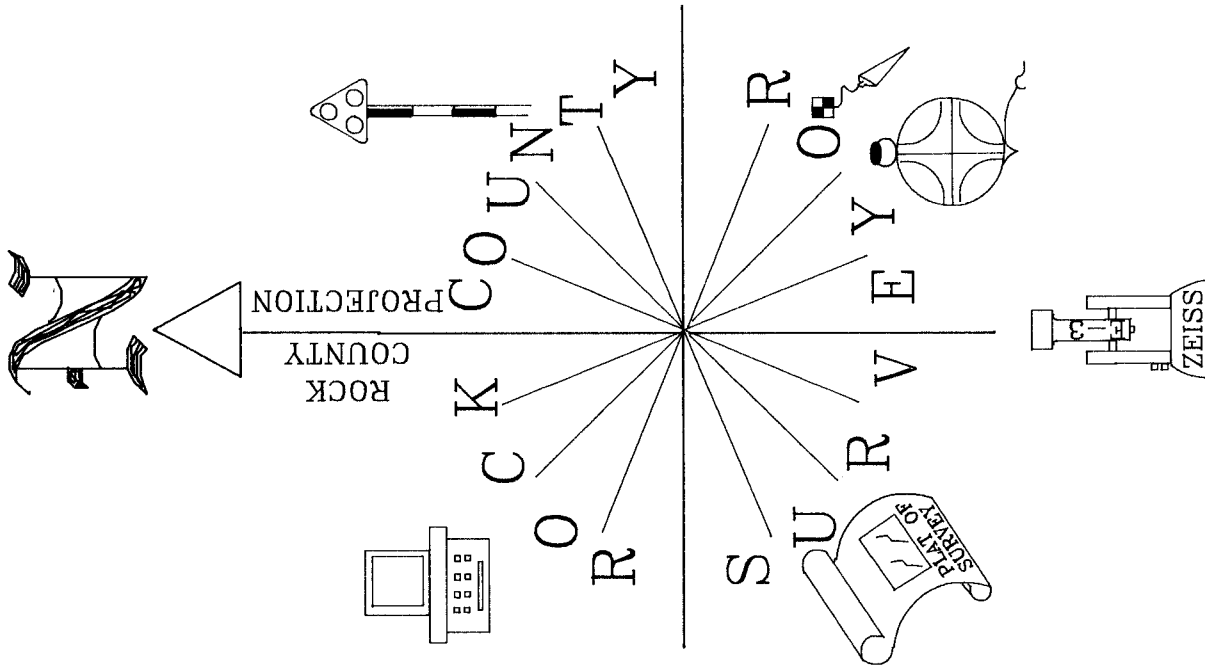
NW COR SEC 31
LIMA TWP
T4N R14E

FOUND BENT 1" PIPE
REPLACED WITH REROD

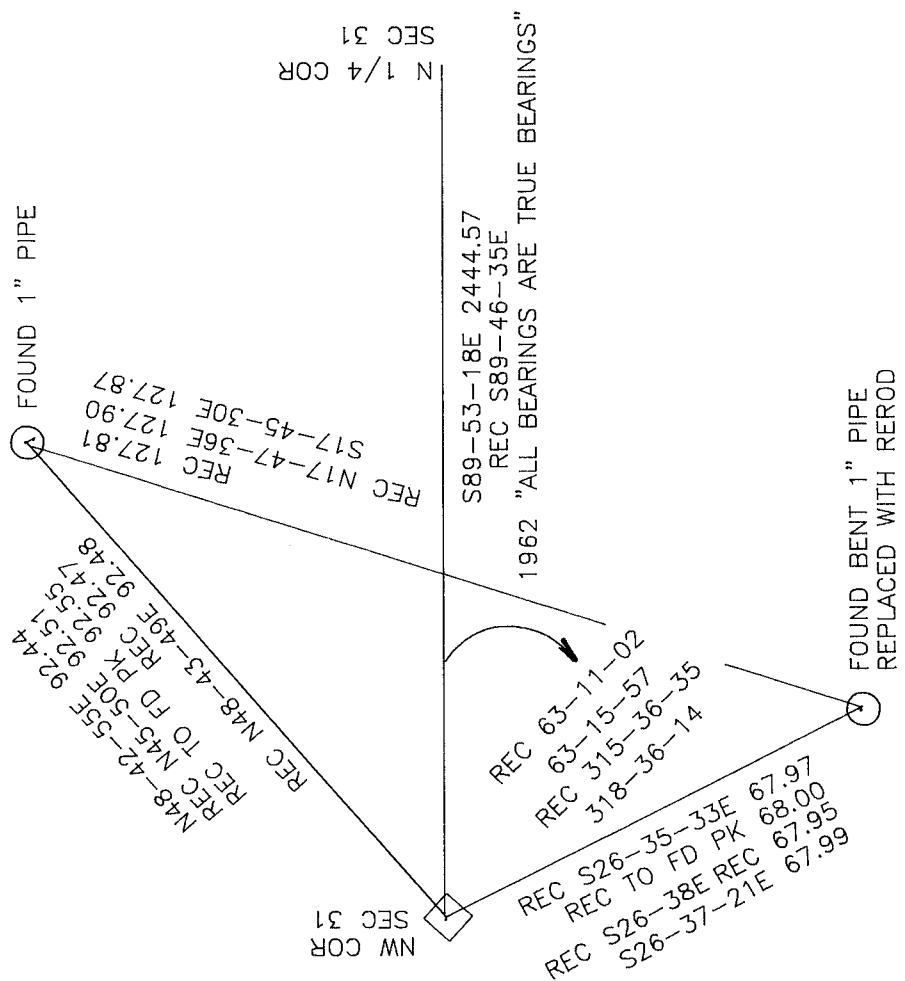
DundBoones
EMBOSSED
SEAL
5-06-02

MAP 3 OF 4

V-1(3)



NOT TO SCALE
OBSERVATION SHEET



MAP 4 OF 4

Donald
 EMBOSSSED
 SEAL
Barnes
 5-06-02

V-1(3)