

U.S. PUBLIC LAND SURVEY MONUMENT RECORD

For Public Land Survey Corners In:

WI ADMINISTRATIVE CODE A-E 7.08 REQUIREMENT

T. 4 N. R. 4 E.

CORNER CODE INDEX

1	2	3	4	5	6	7	8	9	10	11	12	13	14	15	16	17	18	19	20	21	22	23	24	25	
A																									A
B	6					5					4				3					2			1	B	
C																									C
D																									D
E																									E
F																									F
G	7					8					9				10					11			12	G	
H																									H
J																									J
K																									K
L	18					17					16				15					14			13	L	
M																									M
N																									N
O																									O
P	19					20					21				22					23			24	P	
Q																									Q
R																									R
S																									S
T	30					29					28				27					26			25	T	
U																									U
V																									V
W	31					32					33				34					35			36	W	
X																									X
Y																									Y
Z																									Z

LIMA TWP
ROCK COUNTY WI

IF AVAILABLE
ROCK COUNTY COORDINATES PREFERRED

North _____ Elev. _____

East _____

Hor. Datum _____ Vert. Datum _____

LATITUDE _____ ELLIPS. HT. _____

LONGITUDE _____

GPS (X) _____ TRAVERSE (X) _____

BASED ON THE FOLLOWING CONTROL:

PLACE MONUMENT SYMBOL AT PROPER LOCATION ON ABOVE INDEX

CORNER MONUMENT WITNESS MONUMENT

(a)

BEARINGS ARE BASED ON: _____

FIELD BOOK _____ PAGE # _____ SHEET 1 OF 2

SHOW A PLAN VIEW DRAWING DEPICTING THE CORNER MONUMENT AND SURROUNDING PHYSICAL FEATURES, INCLUDING THE EXCAVATION AREA AND DEPTH.

PLANNING & ZONING COMMITTEE ADOPTED THE ABOVE FORM ON 12/2/1982

CORNER CODE 19 (3)

L1605

(B) Describe any record evidence, monument evidence, occupational evidence, testimonial evidence or any other material evidence you considered, and whether the monument was found or placed.

1927 UNKNOWN VOL 3 PG 146 PLACED TIES BUT STATES NOTHING ELSE

1962 BATTERMAN JR. VOL 4 PG 123 FOUND 1" PIPE & REFERENCED SAME.

1975 SCHRÖEDER VOL 4 PG 123 ADDED A REFERENCE PIPE TO THE MAP.

1977 BARNES VOL 5 PG 291 STATES NOTHING ABOUT THE MONUMENT BUT CALLS FOR 2673.62 TO THE S 1/4 CORNER OF SECTION 28.

1982 BARNES V9 FOUND PK 2.3 SOUTH OF THE CENTER OF PAVEMENT. SET SHORT PK TIES. 2.29 TO THE SOUTH & 2.00 TO THE EAST. FD RECORD PIPES TO THE NW & SW. SET REF. BOLT TO THE NE & SE.

1982 BARNES LIMA TWP PROJECT. COMPUTED 283,262.24; 2,306,749.01 BY THE LEAST SQUARES TRANSFORMATION PROGRAM. CALLS FOR 2650.24 TO E 1/4 CORNER SECTION 32, 2673.34 TO S 1/4 CORNER SECTION 28, AND 2648.14 TO E 1/4 CORNER SECTION 29.

1985 DOT V-9 (1) FOUND PK AND REFERENCE SAME. CALLS FOR 2.12 (LT) OF REFERENCE LINE & 300+25.66. AT LOWER RT HAND CORNER NOTE-SECTION COR REF.

1983 WIDOT STH59 R/W PLANS PROJECT #3143-00-21 SHEET #4.11 PK NAIL 283,263.19; 2,306,748.32 E/W NO-13-29W 2.12'

1993 BARNES V-9 (2) PLACED SMALL R/R SPIKE & REFERENCED. SHOWS RELATIONSHIP OF WIDOT REFERENCE LINE WITH SECTION LINE & CORNERS. RESTORED CORNER THROUGH ACCEPTANCE OF OBLITERATED EVIDENCE LOCATION. USED FOUND TWP PROJECT R/R SPIKE AT STATION #216, E 1/4 CORNER SECTION 29 AND THE TRAVERSE TO THE WEST LINE OF SECTION 30 TO COMPUTE THE POSITION BY LEAST SQUARES. THIS IS IN HARMONY WITH THE FOUND DISTURBED BOLT AND DOT R/W INFORMATION.

IN THE FALL OF 2001 I FOUND A R/R SPIKE. THE PAVEMENT WILL BE GROUND AND REPAVED WITHIN A FEW MONTHS. SET STEEL SURVEY SPIKE STAMPED "SURVEY MARK" AT INTERSECTION OF THE TIE DISTANCES.

C) Was the corner restored through acceptance of (1) an obliterated evidence location, or, (2) a found perpetuated location?

ACCEPTED FOUND PERPETUATED LOCATION

I, Donald Barnes, hereby certify that the corner location as identified by the corner code index was determined by me under my direction and control and that this U.S. Public Land Survey Monument Record is correct and complete to the best of my knowledge and belief.

Seal

Donald Barnes

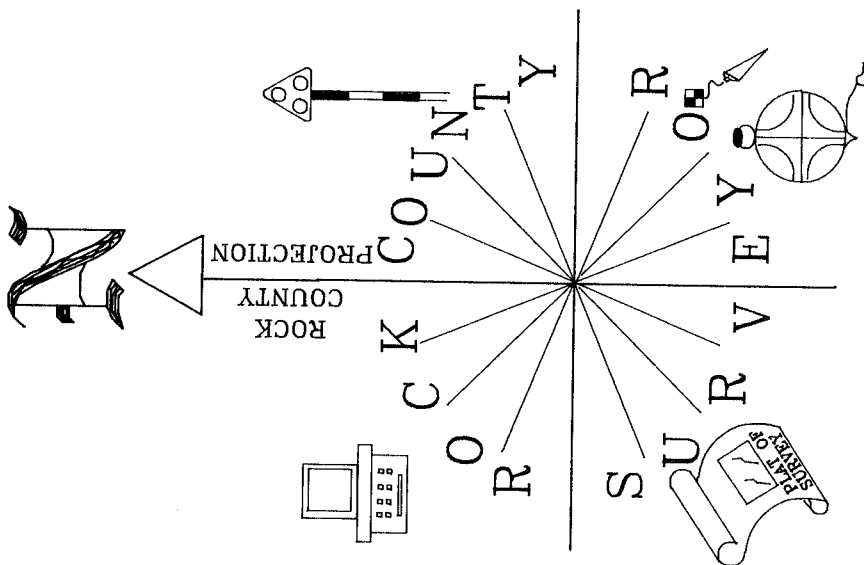
Emboss

9/16/02

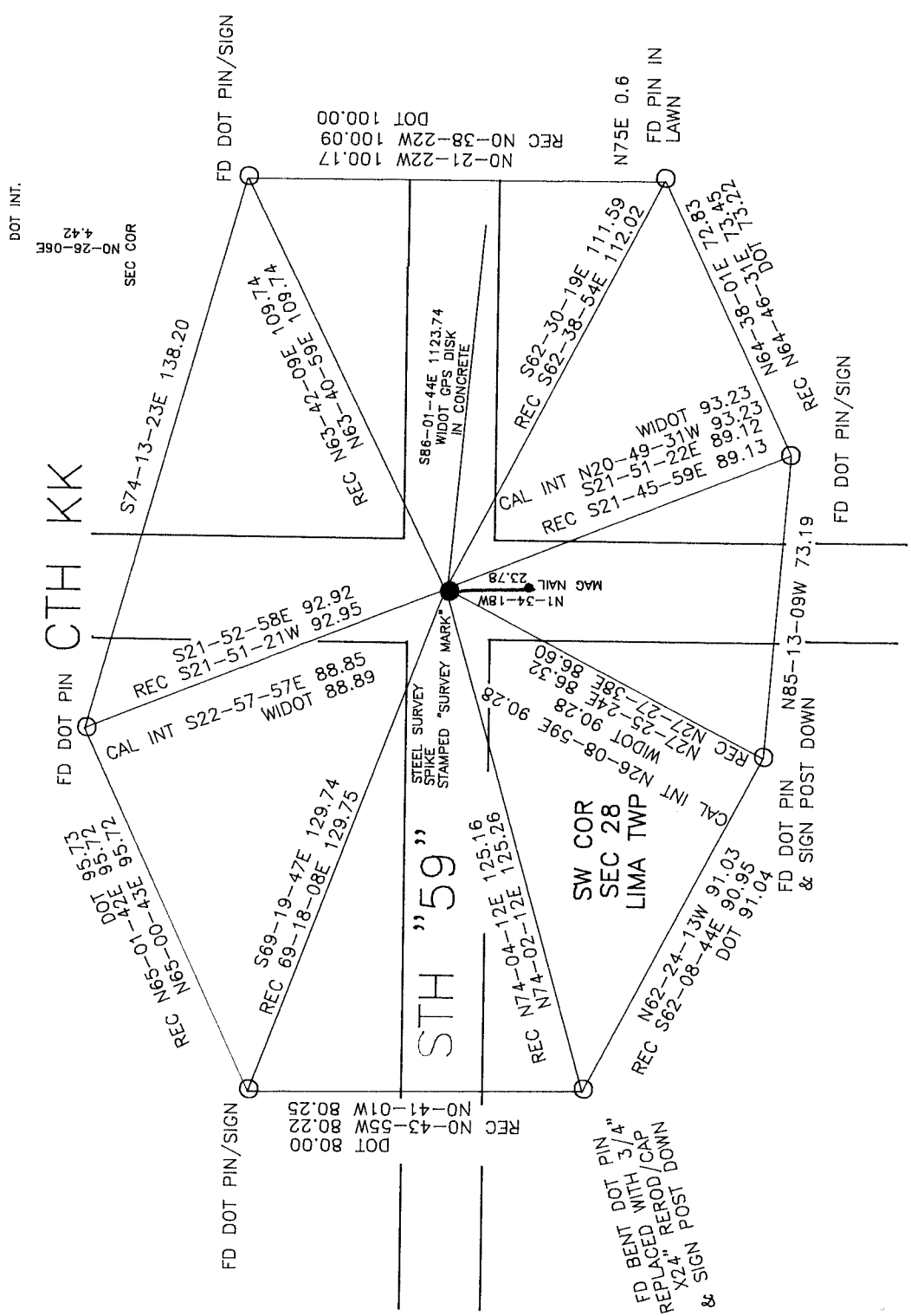
SHEET 1 OF 2

CORNER CODE **V-9(3)**

A.E. 7.08 REQUIREMENT



NOT TO SCALE
OBSERVATION SHEET 801
& SHEET 104



Donald Barnes

EMBOSSED SEAL
5/16/02

2 OF 2
V-9(3)