

# U.S. PUBLIC LAND SURVEY MONUMENT RECORD

For Public Land Survey Corners in the

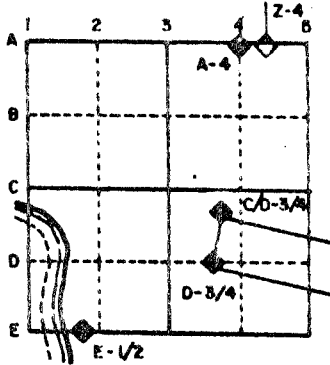
T. 4 N., R. 14 E.

## CORNER CODE INDEX

	1	2	3	4	5	6	7	8	9	10	11	12	13	14	15	16	17	18	19	20	21	22	23	24	25
A																									
B																									
C	6																								
D																									
E																									
F																									
G	7																								
H																									
I																									
J																									
K																									
L	18																								
M																									
N																									
O																									
P	19																								
Q																									
R																									
S																									
T	30																								
U																									
V																									
W																									
X	31																								
Y																									
Z																									

PLACE MONUMENT SYMBOL (◆) AT PROPER LOCATION ON ABOVE INDEX

### EXAMPLE



LIMA TWP  
ROCK COUNTY WI

IF AVAILABLE  
STATE PLANE COORDINATES

North (Y) \_\_\_\_\_ Eleve. (Z) \_\_\_\_\_  
 East (X) \_\_\_\_\_ Zone \_\_\_\_\_  
 Hor. Datum \_\_\_\_\_ Vert. Datum \_\_\_\_\_

◆ CORNER MONUMENT

○ WITNESS MONUMENT

BEARINGS ARE BASED ON:

SEE BACK

SHEET \_\_\_ OF \_\_\_

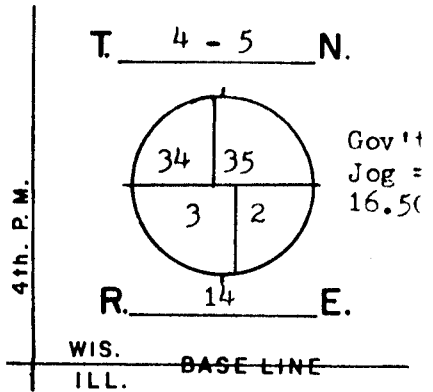
CORNER CODE: A 17 (2)

# GOVERNMENT LAND CORNER RECORD

## JEFFERSON COUNTY

CORNER NO. 49

TYPE OF MONUMENT Aluminum Magnetized  
 STATE PLANE COORDINATES N. 309727.55 / 309727.16  
E. 2317445.01 / 2317461.59  
 ELEVATION M.S.L. DATUM: \_\_\_\_\_  
 THETA ANGLE \_\_\_\_\_  
 FIELD BOOK Koshkonong p. 49  
 DRAWN BY TRW

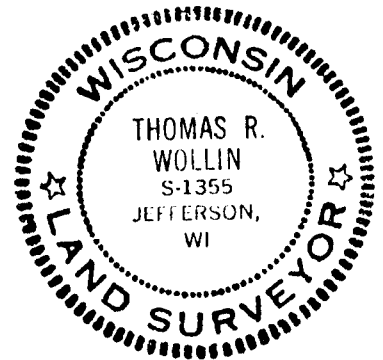


### BASIS FOR MONUMENTATION

Original Survey, 1834-37, Wood Post & Bearing Trees  
3/9-10/1870, Rock Co. Corner established by Edward  
Ruger, Surveyor. Stone monument set. Ref. Rock County  
Resurvey of Koshkonong Township, by Milo C. Jones, Aug-  
December, 1886. Field notes say that the corner was  
set on a straight-line and equal-distant between section  
corners. A Limestone mon., approx. 6" by 36" with a  
squared finished top, was set for the corner. Notes  
recorded in the Reg. of Deeds, Misc. Vol. 1 p. 389-412.  
1972, Pavement area of road was dug for the stone mons.  
but the stones were not found. Iron pipe, (later replaced  
by Alum. Mons), were set for the corners on straight-  
line and equal-distant between section corners.  
5/20/1983, Donald Barnes, RLS, Rock Co. Surveyor, dug  
on Northside of Road bank and found the Koshkonong  
Resurvey Monument, about 10' North of the corner set in  
1972. The Rock Co. stone was not found. An Aluminum  
Monument was set for Jefferson Co. Corner and a Cast  
Iron monument was set for the Rock Co. Corner at the  
Jog distance East of the Jefferson Corner. I removed  
the corner set in 1972, as no surveys had used it.

DATA SHOWN HERE ON  
 CERTIFIED CORRECT:

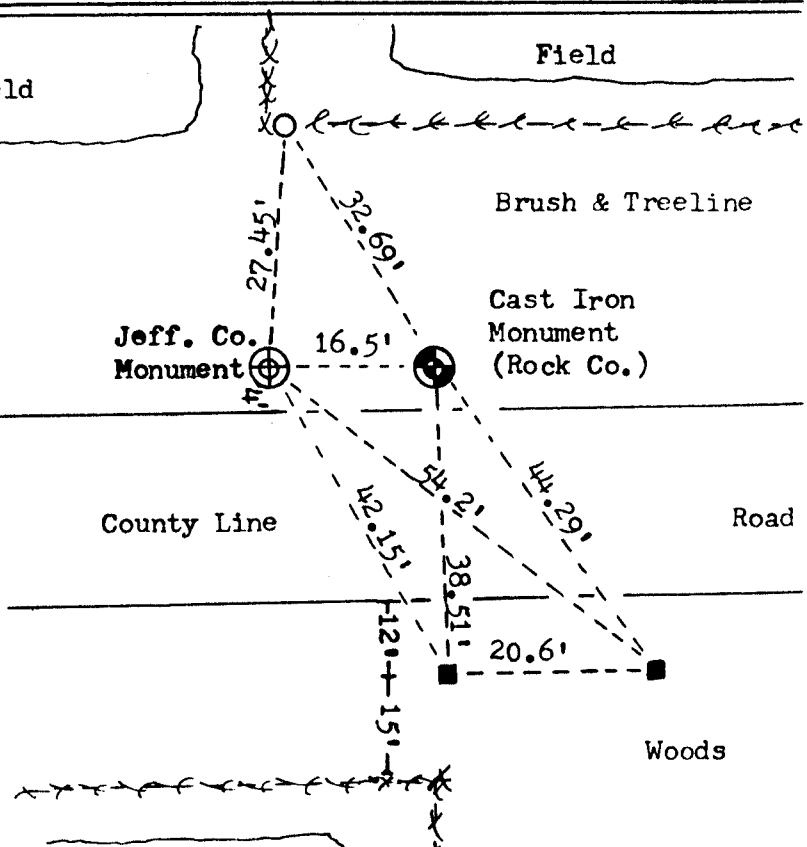
*Thomas R. Wollin*  
 REGISTERED LAND SURVEYOR  
 DATED 4/2/1985



State Plane Coordinates assigned by  
 Rock County Surveyor

### LOCATION SKETCH

- SQUARE CUT LIMESTONE
- CONCRETE / BRASS CAP
- ALUMINUM MAGNETIZED 4" by 30"
- IRON PIPE 1" by 24"
- Iron Bolt 1"sq. top by 24"long
- + PK NAIL
- FENCE
- UTILITY POLE
- STEEL POST / SIGN



### MAINTENANCE RECORD

DATE	INIT.	REMARKS
4/2/1985	TRW	Check on Monuments

A-17 (2)