

# U.S. PUBLIC LAND SURVEY MONUMENT RECORD

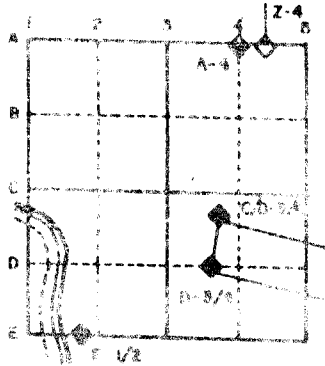
For Public Land Survey Corners in the  
T. 4 N., R. 14 E.

## CORNER CODE INDEX

	1	2	3	4	5	6	7	8	9	10	11	12	13	14	15	16	17	18	19	20	21	22	23	24	25
A																									
B																									
C	6																								
D		5																							
E			4																						
F				3																					
G					2																				
H																									
I																									
J																									
K																									
L																									
M																									
N																									
O																									
P																									
Q																									
R																									
S																									
T																									
U																									
V																									
W																									
X																									
Y																									
Z																									

PLACE MONUMENT SYMBOL (◆) AT PROPER  
LOCATION ON ABOVE INDEX

### EXAMPLE



LIMA TWP  
ROCK COUNTY WI

### IF AVAILABLE STATE PLANE COORDINATES

North (Y) \_\_\_\_\_ Eleve. (Z) \_\_\_\_\_  
 East (X) \_\_\_\_\_ Zone \_\_\_\_\_  
 Hor. Datum \_\_\_\_\_ Vert. Datum \_\_\_\_\_

- (a)      ◆ CORNER MONUMENT      ○ WITNESS MONUMENT

BEARINGS ARE BASED ON:

FIELD BOOK \_\_\_\_\_ PAGE # \_\_\_\_\_

MICROFILMED

SHOW A PLAN VIEW DRAWING DEPICTING THE CORNER MONUMENT AND SURROUNDING PHYSICAL FEATURES, INCLUDING THE EXCAVATION AREA AND DEPTH. THE CORNER MONUMENT SHALL HAVE THE FOLLOWING CHARACTERISTICS: 1) HAVE AT LEAST TWO PREDETERMINED BREAK-OFF POINTS. 2) IF BROKEN, LEAVE A PERMANENTLY MAGNETIZED REMNANT AT THE ORIGINAL POINT. 3) MUST BE EXTENDABLE. 4) THE CAP IS INSCRIBED: ROCK COUNTY SURVEY MONUMENT - PENALTY FOR DISTURBING MARKER. 5) OR AN EXISTING CUT LIMESTONE. AN IRON PIPE 1 1/2" x 4'0" (MINIMUM) MAY BE USED IN AREAS WHERE GROUND WATER IS WITHIN ONE FOOT OF THE SURFACE. IF THE CORNER IS OCCUPIED BY AN IMPROVEMENT (MANHOLE, BURIED CABLE, ETC.) ANY DURABLE, DISTINCT MONUMENT MAY BE USED. CORNERS SHALL BE REFERENCED WITH AT LEAST 4 DURABLE WITNESS MONUMENTS. WITNESS MONUMENTS SHALL BE MADE OF CONCRETE, NATURAL STONE, IRON OR OTHER EQUALLY DURABLE MATERIAL, EXCEPT WOOD. DESCRIBE THE CORNER AND THE WITNESS MONUMENTS.

CORNER CODE:

V7(2)

(B) Describe any record evidence, monument evidence, occupational evidence, testimonial evidence or any other material evidence you considered, and whether the monument was found or placed.  
 1973 LEE VOL 5 PG 25 DOES NOT DESCRIBE MONUMENT. PLACED TIES AND CALLED FOR MONUMENT SOUTH OF CENTER PAVEMENT, 10 EAST OF N/S FENCE ON NORTH SIDE OF ROAD  
 1982 BARNES V7 FOUND OLD REFERENCE MONUMENTS. PLACED PK FROM TIES. PK WAS 8.3 SOUTH OF CENTER PVMT.  
 1982 BARNES TOWNSHIP PROJECT. FOUND DOT PI STATIONS 216+38.86 & 253+84.14. OCCUPIED 253+84.14 AND USED 216+38.86 AS THE BACKSIGHT. MEASURED ANGLE AND DISTANCE TO S 1/4 CORNER OF SECTION 29. USED LEAST SQUARES COORDINATE TRANSFORMATION PROGRAM AND COMPUTED 283,364.37; 2,301,452.14. CALLED FOR 2648.27 TO SW 29 AND 2649.33 TO SE CORNER OF SECTION 29.  
 198? DOT V7(1) FOUND 1/2 SCREW & RIBBON. 8.34\_ TO REF LINE (RT) 273+77.58.  
 1983 DOT R/W MAP - PK NAIL, 283,314.53; 2,304,099.63.

PLACED SMALL R/R SPIKE.

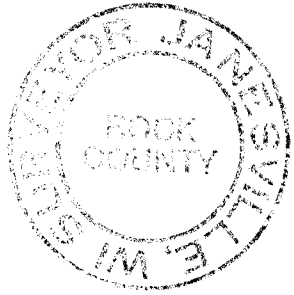
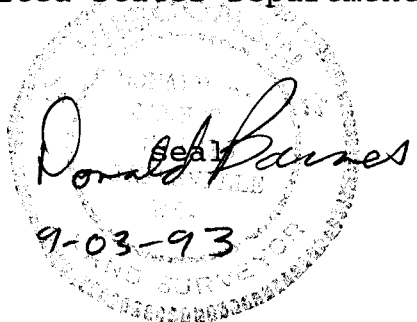
C) Was the corner restored through acceptance of (1) an obliterated evidence location, or, (2) a found perpetuated location?

ACCEPTED OBLITERATED EVIDENCE LOCATION. USED RECORD DISTANCE TO THE NW REFERENCE TIE, DOT REFERENCE LINE INFORMATION, NEW AND OLD TWP TRAVERSE BETWEEN THE SW LINE OF SECTION 31 AND STATIONS NEAR THE SE CORNER OF SECTION 29 TO COMPUTE THE POSITION BY LEAST SQUARES.

D) Describe any material discrepancy between the location of the corner as restored or reestablished and the location of that corner as previously restored or reestablished by distance and direction. Show the discrepancy on the plan view drawing under (a), above. Show the distances between the corner as previously restored or reestablished and (1) the corner as restored or reestablished, and (2) to at least 4 of the witness monuments shown on the drawing in (a), above.

(E) Was the corner reestablished through lost corner proportionate methods? If so, show the method, including the directions and distances to other public land survey corners used as evidence or used for proportioning the corner location.

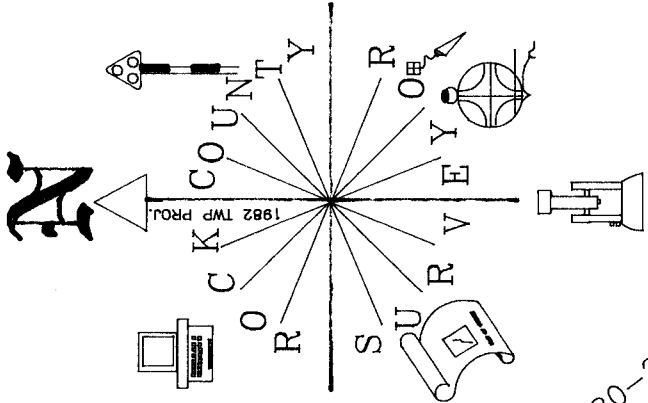
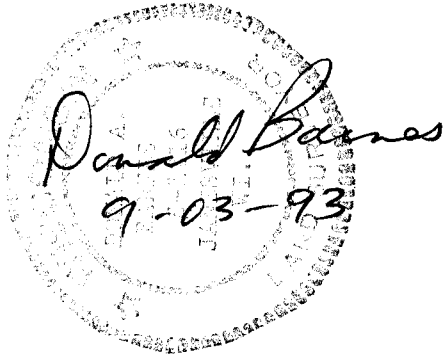
I, Donald Barnes, hereby certify that the corner points as identified by the corner code index were, in a field survey on, November 9, 1992, established, re-established, monumented, re-monumented, recovered or restored as expressed below and in conformance with the regulations and rules as required in the current manual of survey instructions of the United States Department of Interior, Bureau of Land Management.



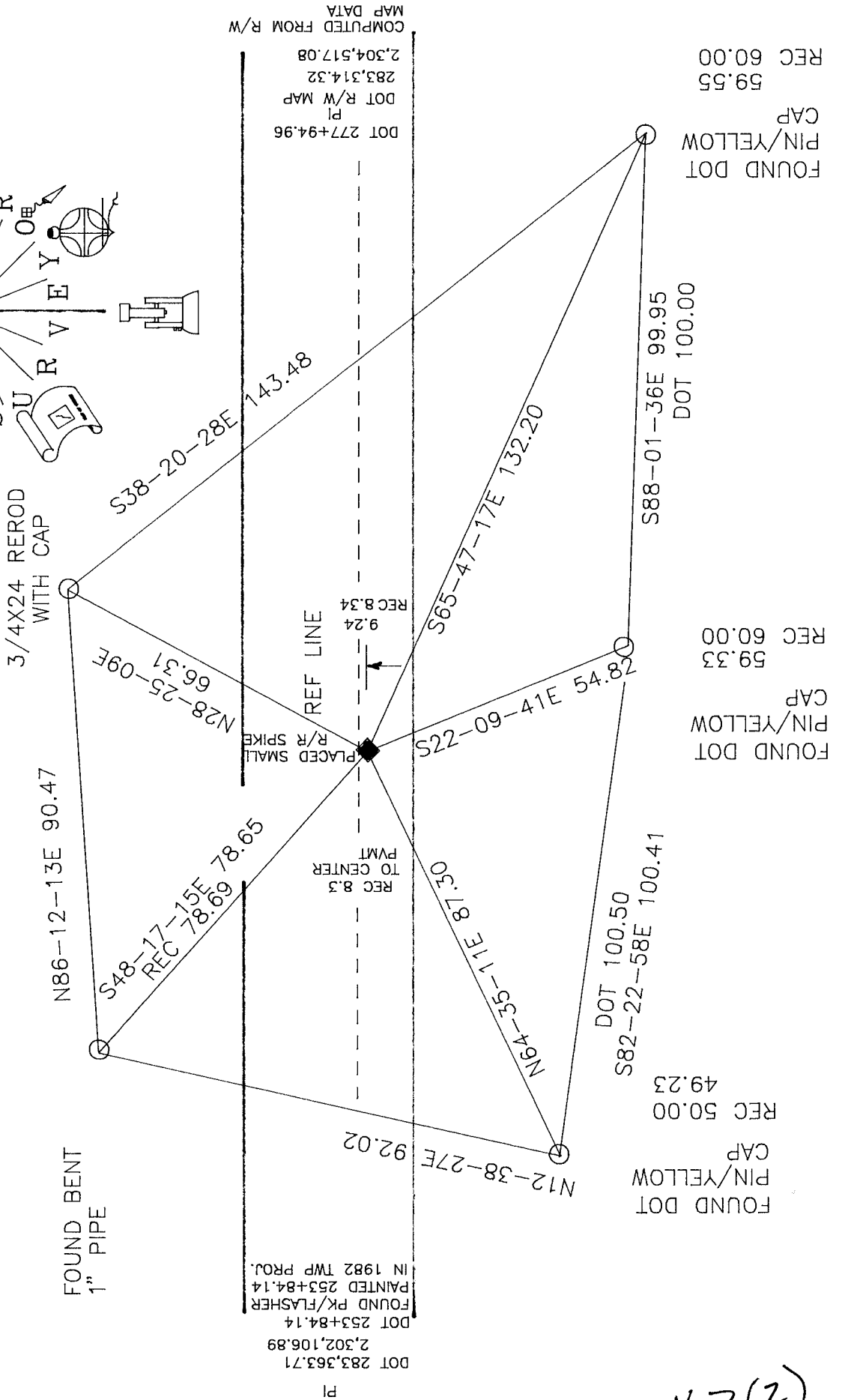
COUNTY SURVEYOR FILING DATA  
 Date of computer entry \_\_\_\_\_  
 Date microfilmed \_\_\_\_\_  
 Number of included sheets 2  
 CORNER CODE

AFFIX YOUR LAND SURVEYOR SEAL

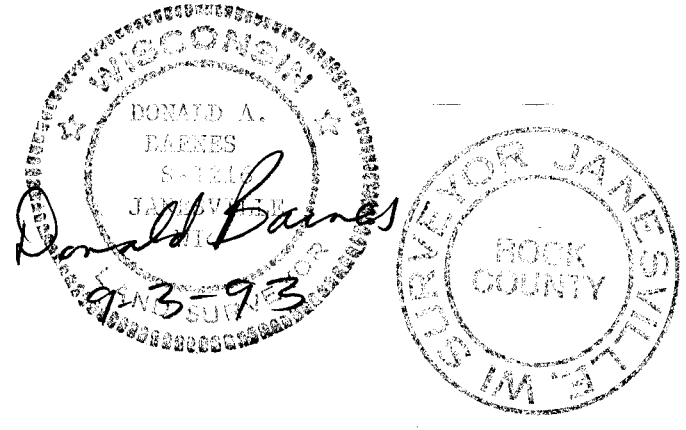
V7(2)



DOT R/W MAP  
 DOT FD PK  
 NAD 27 283,314.53  
 2,304,099.63  
 1982 TWP PROJ.  
 TRANSFORMATION  
 283,313.58  
 2,304,100.32



v7(2)



REFERENCE LINE COMPUTED FROM  
1982 TWP PROJECT DATA, DOT  
R/W MAP, & NEW FIELD DATA.

DOT 180-09-53.5  
180-12-44

DOT 180-20-24  
180-20-52

DOT 180-05-04  
180-04-23

STA 1938.86  
INV STATE 1938.77  
S89-57-58E 1938.86

STA 1858.83  
INV STATE 1858.74  
S89-45-14E 1858.89

STA 1886.47  
INV STATE 1886.38  
S89-24-22E 1886.53

STA 2593.62  
INV STATE 2593.48  
S88-04-51E 2593.60

DOT 283,325.18  
2,296,423.17  
NAD 27 R/W PLAT

DOT 196+99.98  
PI  
FD PK

DOT 283,345.82  
2,298,361.83  
NAD 27 R/W PLAT

DOT 216+38.84  
PI  
FD PK

DOT 283,360.26  
2,300,220.51  
NAD 27 R/W PLAT

DOT 234+97.67  
PI

DOT 283,314.32  
2,304,517.08  
NAD 27 R/W PLAT

DOT 277+94.96  
PI

DOT 283,257.37  
2,307,109.94  
NAD 27 R/W PLAT

DOT 303+88.58  
PI  
FD PK

### 1982 TWP PROJECT

