

U. S. PUBLIC LAND SURVEY MONUMENT RECORD

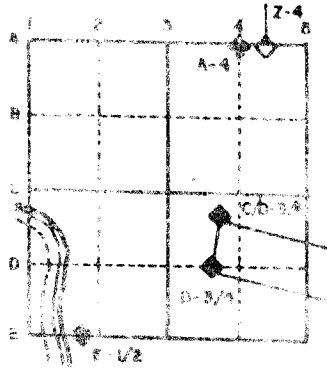
For Public Land Survey Corners in the
T. A. N., R. 1A E.

CORNER CODE INDEX

| | | | | | | | | | | | | | | | | | | | | | | | | | |
|---|---|---|---|---|---|---|---|---|---|----|----|----|----|----|----|----|----|----|----|----|----|----|----|----|----|
| | 1 | 2 | 3 | 4 | 5 | 6 | 7 | 8 | 9 | 10 | 11 | 12 | 13 | 14 | 15 | 16 | 17 | 18 | 19 | 20 | 21 | 22 | 23 | 24 | 25 |
| A | | | | | | | | | | | | | | | | | | | | | | | | | |
| B | | | | | | | | | | | | | | | | | | | | | | | | | |
| C | 6 | | | | | | | | | | | | | | | | | | | | | | | | |
| D | | 5 | | | | | | | | | | | | | | | | | | | | | | | |
| E | | | 4 | | | | | | | | | | | | | | | | | | | | | | |
| F | | | | 3 | | | | | | | | | | | | | | | | | | | | | |
| G | | | | | 2 | | | | | | | | | | | | | | | | | | | | |
| H | | | | | | | | | | | | | | | | | | | | | | | | | |
| I | | | | | | | | | | | | | | | | | | | | | | | | | |
| J | | | | | | | | | | | | | | | | | | | | | | | | | |
| K | | | | | | | | | | | | | | | | | | | | | | | | | |
| L | | | | | | | | | | | | | | | | | | | | | | | | | |
| M | | | | | | | | | | | | | | | | | | | | | | | | | |
| N | | | | | | | | | | | | | | | | | | | | | | | | | |
| O | | | | | | | | | | | | | | | | | | | | | | | | | |
| P | | | | | | | | | | | | | | | | | | | | | | | | | |
| Q | | | | | | | | | | | | | | | | | | | | | | | | | |
| R | | | | | | | | | | | | | | | | | | | | | | | | | |
| S | | | | | | | | | | | | | | | | | | | | | | | | | |
| T | | | | | | | | | | | | | | | | | | | | | | | | | |
| U | | | | | | | | | | | | | | | | | | | | | | | | | |
| V | | | | | | | | | | | | | | | | | | | | | | | | | |
| W | | | | | | | | | | | | | | | | | | | | | | | | | |
| X | | | | | | | | | | | | | | | | | | | | | | | | | |
| Y | | | | | | | | | | | | | | | | | | | | | | | | | |
| Z | | | | | | | | | | | | | | | | | | | | | | | | | |

PLACE MONUMENT SYMBOL (◆) AT PROPER
LOCATION ON ABOVE INDEX

EXAMPLE



LIMA TWP
ROCK COUNTY WI

IF AVAILABLE STATE PLANE COORDINATES

North (Y) _____ Eleve. (Z) _____
East (X) _____ Zone _____
Hor. Datum _____ Vert. Datum _____

(a.)

◆ CORNER MONUMENT

○ WITNESS MONUMENT

BEARINGS ARE BASED ON :

FIELD BOOK _____ PAGE # _____

SHOW A PLAN VIEW DRAWING DEPICTING THE CORNER MONUMENT AND SURROUNDING PHYSICAL FEATURES, INCLUDING THE EXCAVATION AREA AND DEPTH. THE CORNER MONUMENT SHALL HAVE THE FOLLOWING CHARACTERISTICS: 1) HAVE AT LEAST TWO PREDETERMINED BREAK-OFF POINTS. 2) IF BROKEN, LEAVE A PERMANENTLY MAGNETIZED REMNANT AT THE ORIGINAL POINT. 3) MUST BE EXTENDABLE. 4) THE CAP IS INSCRIBED: ROCK COUNTY SURVEY MONUMENT - PENALTY FOR DISTURBING MARKER. 5) OR AN EXISTING CUT LIMESTONE. AN IRON PIPE 1 1/2" x 4'0" (MINIMUM) MAY BE USED IN AREAS WHERE GROUND WATER IS WITHIN ONE FOOT OF THE SURFACE. IF THE CORNER IS OCCUPIED BY AN IMPROVEMENT (MANHOLE, BURIED CABLE, ETC.) ANY DURABLE, DISTINCT MONUMENT MAY BE USED. CORNERS SHALL BE REFERENCED WITH AT LEAST 4 DURABLE WITNESS MONUMENTS. WITNESS MONUMENTS SHALL BE MADE OF CONCRETE, NATURAL STONE, IRON OR OTHER EQUALLY DURABLE MATERIAL, EXCEPT WOOD. DESCRIBE THE CORNER AND THE WITNESS MONUMENTS.

CORNER CODE:
V 9 (2)

(B) Describe any record evidence, monument evidence, occupational evidence, testimonial evidence or any other material evidence you considered, and whether the monument was found or placed.

- 1927 UNKNOWN VOL 3 PG 146 PLACED TIES BUT STATES NOTHING ELSE
- 1962 BATTERMAN JR. VOL 4 PG 123 FOUND 1" PIPE & REFERENCED SAME.
- 1975 SCHROEDER VOL 4 PG 123 ADDED A REFERENCE PIPE TO THE MAP.
- 1977 BARNES VOL 5 PG 291 STATES NOTHING ABOUT THE MONUMENT BUT CALLS FOR 2673.62 TO THE S 1/4 CORNER OF SECTION 28.
- 1982 BARNES V9 FOUND PK 2.3 SOUTH OF THE CENTER OF PAVEMENT.
- 1982 BARNES LIMA TWP PROJECT. COMPUTED 283,262.24; 2,306,749.01 BY THE LEAST SQUARES TRANSFORMATION PROGRAM. CALLS FOR 2650.24 TO E 1/4 CORNER SECTION 32, 2673.34 TO S 1/4 CORNER SECTION 28, AND 2648.14 TO E 1/4 CORNER SECTION 29.
- 198? DOT V9 (1) FOUND PK AND REFERENCE SAME. CALLS FOR 2.12 (LT) OF REFERENCE LINE & 300+25.66.
- 1983 DOT R/W MAP 283,263.19; 2,306,748.32

PLACED SMALL R/R SPIKE

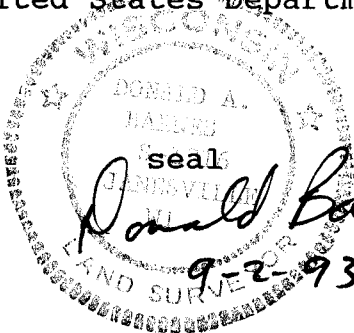
C) Was the corner restored through acceptance of (1) an obliterated evidence location, or, (2) a found perpetuated location?

RESTORED CORNER THROUGH ACCEPTANCE OF OBLITERATED EVIDENCE LOCATION. USED FOUND TWP PROJECT R/R SPIKE AT STATION #216 , E 1/4 CORNER SECTION 29 AND THE TRAVERSE TO THE WEST LINE OF SECTION 30 TO COMPUTE THE POSITION BY LEAST SQUARES. THIS IS IN HARMONY WITH THE FOUND DISTURBED BOLT AND DOT R/W INFORMATION.

D) Describe any material discrepancy between the location of the corner as restored or reestablished and the location of that corner as previously restored or reestablished by distance and direction. Show the discrepancy on the plan view drawing under (a), above. Show the distances between the corner as previously restored or reestablished and (1) the corner as restored or reestablished, and (2) to at least 4 of the witness monuments shown on the drawing in (a), above.

(E) Was the corner reestablished through lost corner proportionate methods? If so, show the method, including the directions and distances to other public land survey corners used as evidence or used for proportioning the corner location.

I, Donald Barnes, hereby certify that the corner points as identified by the corner code index were, in a field survey on, November 9, 1992, established, re-established, monumented, re-monumented, recovered or restored as expressed below and in conformance with the regulations and rules as required in the current manual of survey instructions of the United States Department of Interior, Bureau of Land Management.



COUNTY SURVEYOR FILING DATA

Date of computer entry _____

Date microfilmed _____

Number of included sheets 2
CORNER CODE

AFFIX YOUR LAND SURVEYOR SEAL



DOT 180-09-53.5
180-12-44

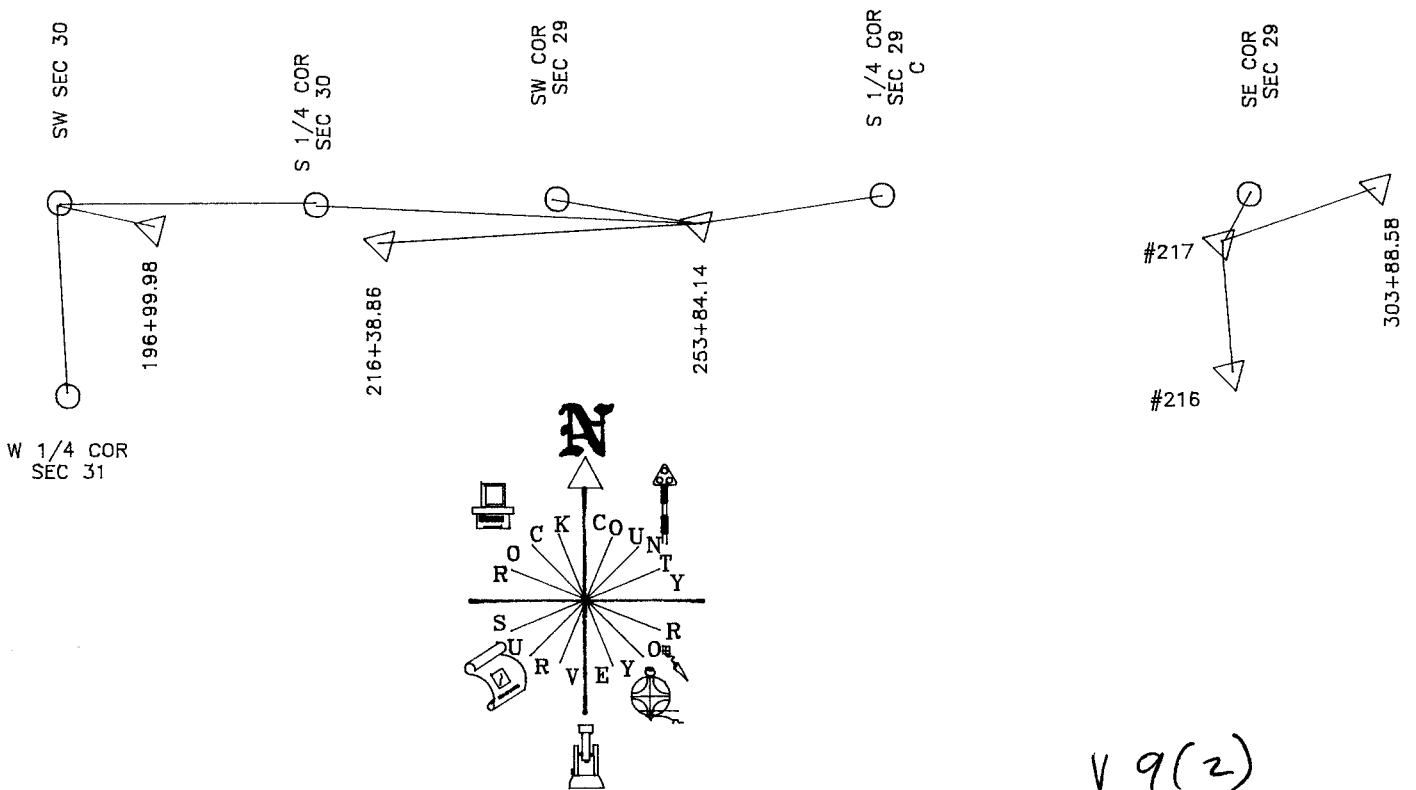
DOT 180-20-24
180-20-52

DOT 180-05-04
180-04-23

REFERENCE LINE COMPUTED FROM
1982 TWP PROJECT DATA, DOT
R/W MAP, & NEW FIELD DATA.

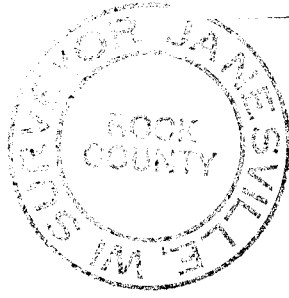
| DOT 283,325.18 2,296,423.17 NAD 27 R/W PLAT | STA 1938.86 INV STATE 1938.77 S89-57-58E 1938.86 | DOT 196+99.98 PI FD PK | DOT 283,345.82 2,298,361.83 NAD 27 R/W PLAT | STA 1858.83 INV STATE 1858.74 S89-45-14E 1858.89 | DOT 216+38.84 PI FD PK | DOT 283,360.26 2,300,220.51 NAD 27 R/W PLAT | STA 1886.47 INV STATE 1886.38 S89-24-22E 1886.53 | DOT 234+97.67 PI | DOT 283,314.32 2,304,517.08 NAD 27 R/W PLAT | DOT 277+94.96 PI | DOT 283,257.37 2,307,109.94 NAD 27 R/W PLAT | STA 2593.62 INV STATE 2593.48 S88-04-51E 2593.60 | DOT 303+88.58 PI FD PK |
|---|--|------------------------------|---|--|------------------------------|---|--|---------------------|---|---------------------|---|--|------------------------------|
|---|--|------------------------------|---|--|------------------------------|---|--|---------------------|---|---------------------|---|--|------------------------------|

1982 TWP PROJECT



V 9(2)

V9(2)



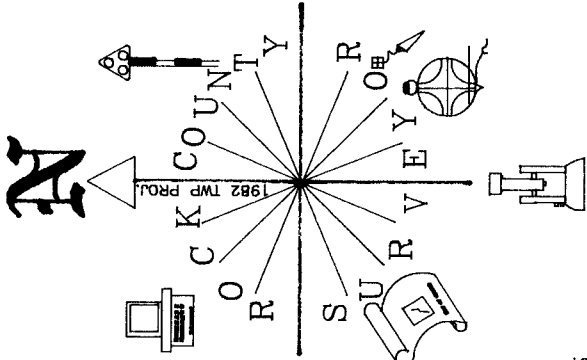
Page 2 of 3

FOUND DOT
PIN/YELLOW
CAP

DOT R/W MAP
REF LINE TO E 1/4 COR SEC 29
2646.27
DOT 2650.45 E 1/4 TO SE SEC 29
NO-13-30W 2648.16

CTH "KK"

STH "59"



DOT R/W MAP
277+94.96
DOT 283,314.32
COMPUTED FROM R/W
2,304,517.08
MAP DATA

COMPUTED FROM DOT
R/W MAP
DOT 298+25.66

97.27

200.27

DOT 200.00

DOT 40.00

DOT 40.00

NO-43-55W 80.22

DOT 40.21

DOT 39.92

DOT 40.00

DOT 40.00

DOT 200.00

DOT 200.00

REC 50.00

REC 50.00

NO-38-22W

100.09

REC 50.00

REC 50.00

DOT 200.00

DOT 200.00

DOT 302+25.66

COMPUTED FROM 303

DOT 162.92

DOT 162.92

DOT 162.92

DOT 162.92

DOT R/W MAP

283,257.37

2,307,109.94

