

U.S. PUBLIC LAND SURVEY MONUMENT RECORD

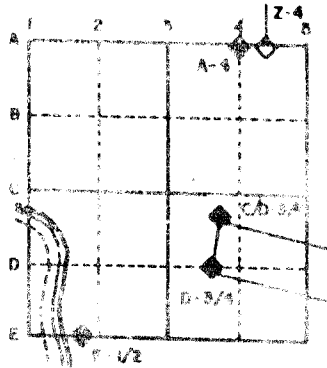
For Public Land Survey Corners in the
T. 4 N., R. 14 E.

CORNER CODE INDEX

| | 1 | 2 | 3 | 4 | 5 | 6 | 7 | 8 | 9 | 10 | 11 | 12 | 13 | 14 | 15 | 16 | 17 | 18 | 19 | 20 | 21 | 22 | 23 | 24 | 25 |
|----|---|---|---|---|---|----|----|----|----|----|----|----|----|----|----|----|----|----|----|----|----|----|----|----|----|
| A | | | | | | | | | | | | | | | | | | | | | | | | | |
| B | | | | | | | | | | | | | | | | | | | | | | | | | |
| C | 6 | | | | | | | | | | | | | | | | | | | | | | | | |
| D | | 5 | | | | | | | | | | | | | | | | | | | | | | | |
| E | | | 4 | | | | | | | | | | | | | | | | | | | | | | |
| F | | | | 3 | | | | | | | | | | | | | | | | | | | | | |
| G | | | | | 2 | | | | | | | | | | | | | | | | | | | | |
| H | | | | | | | | | | | | | | | | | | | | | | | | | |
| I | | | | | | | | | | | | | | | | | | | | | | | | | |
| J | | | 7 | | | | | | | | | | | | | | | | | | | | | | |
| K | | | | 8 | | | | | | | | | | | | | | | | | | | | | |
| L | | | | | 9 | | | | | | | | | | | | | | | | | | | | |
| M | | | | | | 10 | | | | | | | | | | | | | | | | | | | |
| N | | | | | | | 11 | | | | | | | | | | | | | | | | | | |
| O | | | | | | | | 12 | | | | | | | | | | | | | | | | | |
| P | | | | | | | | | 13 | | | | | | | | | | | | | | | | |
| Q | | | | | | | | | | 14 | | | | | | | | | | | | | | | |
| R | | | | | | | | | | | 15 | | | | | | | | | | | | | | |
| S | | | | | | | | | | | | 16 | | | | | | | | | | | | | |
| T | | | | | | | | | | | | | 17 | | | | | | | | | | | | |
| U | | | | | | | | | | | | | | 18 | | | | | | | | | | | |
| V | | | | | | | | | | | | | | | 19 | | | | | | | | | | |
| W | | | | | | | | | | | | | | | | 20 | | | | | | | | | |
| X | | | | | | | | | | | | | | | | | 21 | | | | | | | | |
| Y | | | | | | | | | | | | | | | | | | 22 | | | | | | | |
| Z | | | | | | | | | | | | | | | | | | | 23 | | | | | | |
| 1 | | | | | | | | | | | | | | | | | | | | 24 | | | | | |
| 2 | | | | | | | | | | | | | | | | | | | | | 25 | | | | |
| 3 | | | | | | | | | | | | | | | | | | | | | | 26 | | | |
| 4 | | | | | | | | | | | | | | | | | | | | | | | 27 | | |
| 5 | | | | | | | | | | | | | | | | | | | | | | | | 28 | |
| 6 | | | | | | | | | | | | | | | | | | | | | | | | | 29 |
| 7 | | | | | | | | | | | | | | | | | | | | | | | | | 30 |
| 8 | | | | | | | | | | | | | | | | | | | | | | | | | |
| 9 | | | | | | | | | | | | | | | | | | | | | | | | | |
| 10 | | | | | | | | | | | | | | | | | | | | | | | | | |
| 11 | | | | | | | | | | | | | | | | | | | | | | | | | |
| 12 | | | | | | | | | | | | | | | | | | | | | | | | | |
| 13 | | | | | | | | | | | | | | | | | | | | | | | | | |
| 14 | | | | | | | | | | | | | | | | | | | | | | | | | |
| 15 | | | | | | | | | | | | | | | | | | | | | | | | | |
| 16 | | | | | | | | | | | | | | | | | | | | | | | | | |
| 17 | | | | | | | | | | | | | | | | | | | | | | | | | |
| 18 | | | | | | | | | | | | | | | | | | | | | | | | | |
| 19 | | | | | | | | | | | | | | | | | | | | | | | | | |
| 20 | | | | | | | | | | | | | | | | | | | | | | | | | |
| 21 | | | | | | | | | | | | | | | | | | | | | | | | | |
| 22 | | | | | | | | | | | | | | | | | | | | | | | | | |
| 23 | | | | | | | | | | | | | | | | | | | | | | | | | |
| 24 | | | | | | | | | | | | | | | | | | | | | | | | | |
| 25 | | | | | | | | | | | | | | | | | | | | | | | | | |
| 26 | | | | | | | | | | | | | | | | | | | | | | | | | |
| 27 | | | | | | | | | | | | | | | | | | | | | | | | | |
| 28 | | | | | | | | | | | | | | | | | | | | | | | | | |
| 29 | | | | | | | | | | | | | | | | | | | | | | | | | |
| 30 | | | | | | | | | | | | | | | | | | | | | | | | | |
| 31 | | | | | | | | | | | | | | | | | | | | | | | | | |
| 32 | | | | | | | | | | | | | | | | | | | | | | | | | |
| 33 | | | | | | | | | | | | | | | | | | | | | | | | | |
| 34 | | | | | | | | | | | | | | | | | | | | | | | | | |
| 35 | | | | | | | | | | | | | | | | | | | | | | | | | |
| 36 | | | | | | | | | | | | | | | | | | | | | | | | | |

PLACE MONUMENT SYMBOL (◆) AT PROPER LOCATION ON ABOVE INDEX

EXAMPLE



LIMA TWP
ROCK COUNTY WI

IF AVAILABLE STATE PLANE COORDINATES

North (Y) _____ Eleve. (Z) _____
 East (X) _____ Zone _____
 Hor. Datum _____ Vert. Datum _____

- (a) **◆** CORNER MONUMENT **○** WITNESS MONUMENT

BEARINGS ARE BASED ON:

FIELD BOOK _____ PAGE # _____

SHOW A PLAN VIEW DRAWING DEPICTING THE CORNER MONUMENT AND SURROUNDING PHYSICAL FEATURES, INCLUDING THE EXCAVATION AREA AND DEPTH. THE CORNER MONUMENT SHALL HAVE THE FOLLOWING CHARACTERISTICS: 1) HAVE AT LEAST TWO PREDETERMINED BREAK-OFF POINTS. 2) IF BROKEN, LEAVE A PERMANENTLY MAGNETIZED REMNANT AT THE ORIGINAL POINT. 3) MUST BE EXTENDABLE. 4) THE CAP IS INSCRIBED: ROCK COUNTY SURVEY MONUMENT - PENALTY FOR DISTURBING MARKER. 5) OR AN EXISTING CUT LIMESTONE. AN IRON PIPE 1½" x 4'0" (MINIMUM) MAY BE USED IN AREAS WHERE GROUND WATER IS WITHIN ONE FOOT OF THE SURFACE. IF THE CORNER IS OCCUPIED BY AN IMPROVEMENT (MANHOLE, BURIED CABLE, ETC.) ANY DURABLE, DISTINCT MONUMENT MAY BE USED. CORNERS SHALL BE REFERENCED WITH AT LEAST 4 DURABLE WITNESS MONUMENTS. WITNESS MONUMENTS SHALL BE MADE OF CONCRETE, NATURAL STONE, IRON OR OTHER EQUALLY DURABLE MATERIAL, EXCEPT WOOD. DESCRIBE THE CORNER AND THE WITNESS MONUMENTS.

CORNER CODE:
V 5 (2)

(B) Describe any record evidence, monument evidence, occupational evidence, testimonial evidence or any other material evidence you considered, and whether the monument was found or placed.

1871 RUGER VOL 2 PG 80 2644.12 TO S 1/4 CORNER SECTION 30. FOUND STUMP OF SE BT & WHERE STUMP OF NW BT HAD BEEN DUG UP. DROVE STAKE & SURROUNDED IT WITH 2 HH AND 2 LIMESTONES.

1973 LEE VOL 5 PG 25 DOES NOT DESCRIBE THE MONUMENT. PLACED TIES AND STATES IT IS 2' NORTH OF CENTER OF PVMT AND 12 EAST OF N/S FENCE ON SOUTH SIDE OF ROAD.

1980 BARNES VOL 6 PG 41 STATES NOTHING ABOUT MONUMENT. CALLS FOR 2648.23 TO E 1/4 CORNER OF SECTION 30.

1982 BARNES LIMA TWP PROJECT. FOUND DOT PI POINTS. OCCUPIED STA 253+84.14 AND USED STA 216+38.86 AS A BACKSIGHT. TURNED ANGLE AND DISTANCE TO CORNER. USED LEAST SQUARES TRANSFORMATION SOFTWARE TO COMPUTE COORDINATES OF 283,363; 2301452.67.

1982 BARNES V1 SET PK. FOUND OLD TIES AND MEASURED TO REFERENCE PIPES.

198? DOT V1(1) FOUND PK PLACED & TIES. STATES 1.86 (LT) TO REF. LINE. 2476+29.42

1983 DOT R/W MAP 283,364.37; 2,301,452.14

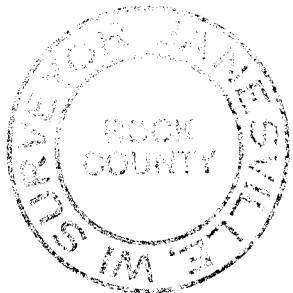
FOUND PK IN HARMONY WITH DOT REFERENCE TIES AND REFERENCE LINE. 2.7' NORTH OF CENTER PVMT, 11 EAST OF N/S FENCE.

C) Was the corner restored through acceptance of (1) an obliterated evidence location, or, (2) a found perpetuated location?
ACCEPTED FOUND PERPETUATED LOCATION.

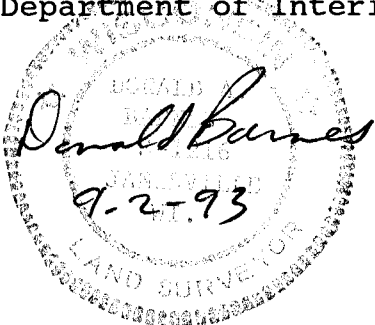
D) Describe any material discrepancy between the location of the corner as restored or reestablished and the location of that corner as previously restored or reestablished by distance and direction. Show the discrepancy on the plan view drawing under (a), above. Show the distances between the corner as previously restored or reestablished and (1) the corner as restored or reestablished, and (2) to at least 4 of the witness monuments shown on the drawing in (a), above.

(E) Was the corner reestablished through lost corner proportionate methods? If so, show the method, including the directions and distances to other public land survey corners used as evidence or used for proportioning the corner location.

I, Donald Barnes, hereby certify that the corner points as identified by the corner code index were, in a field survey on, November 9, 1992, established, re-established, monumented, re-monumented, recovered or restored as expressed below and in conformance with the regulations and rules as required in the current manual of survey instructions of the United States Department of Interior, Bureau of Land Management.



seal



COUNTY SURVEYOR FILING DATA

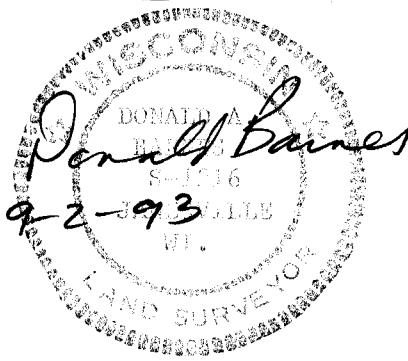
Date of computer entry _____

Date microfilmed _____

Number of included sheets 2

CORNER CODE

AFFIX YOUR LAND SURVEYOR SEAL



REFERENCE LINE COMPUTED FROM
1982 TWP PROJECT DATA, DOT
R/W MAP, & NEW FIELD DATA.

DOT 180-09-53.5
180-12-44

DOT 180-20-24
180-20-52

DOT 180-05-04
180-04-23

STA 1938.86
INV STATE 1938.77
S89-57-58E 1938.86

STA 1858.83
INV STATE 1858.74
S89-45-14E 1858.89

STA 1886.47
INV STATE 1886.38
S89-24-22E 1886.53

STA 2593.62
INV STATE 2593.48
S88-04-51E 2593.60

DOT 283,325.18
2,296,423.17
NAD 27 R/W PLAT
DOT 196+99.98
PI
FD PK

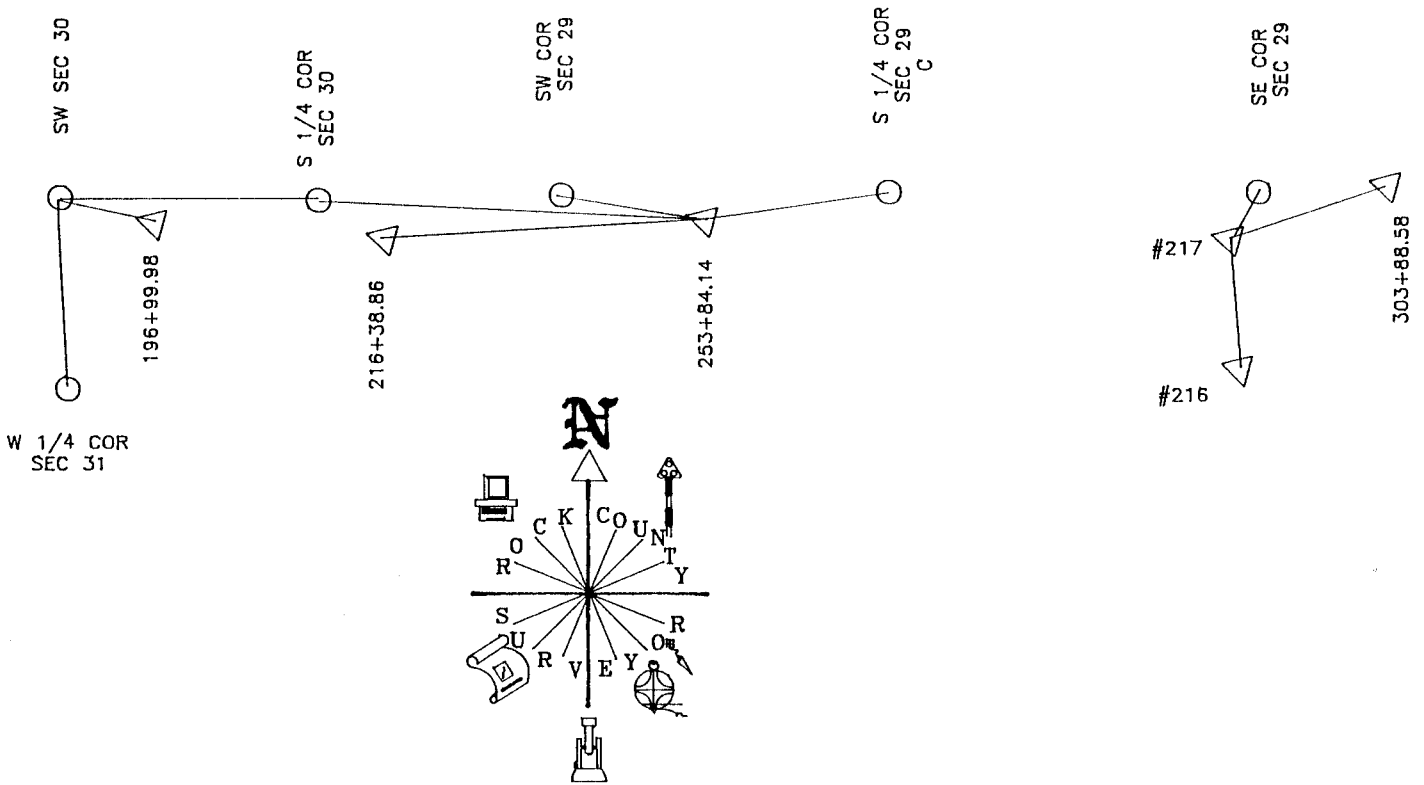
DOT 283,345.82
2,298,361.83
NAD 27 R/W PLAT
DOT 216+38.84
PI
FD PK

DOT 283,360.26
2,300,220.51
NAD 27 R/W PLAT
DOT 234+97.67
PI

DOT 283,314.32
2,304,517.08
NAD 27 R/W PLAT
DOT 277+94.96
PI

DOT 283,257.37
2,307,109.94
NAD 27 R/W PLAT
DOT 303+88.58
PI
FD PK

1982 TWP PROJECT



V5(2)