

# U.S. PUBLIC LAND SURVEY MONUMENT RECORD

For Public Land Survey Corners In:  
T. 4 N. R. 14 E.

WI ADMINISTRATIVE CODE A-E 7.08 REQUIREMENT

CORNER CODE INDEX

1	2	3	4	5	6	7	8	9	10	11	12	13	14	15	16	17	18	19	20	21	22	23	24	25	
A																									A
B																									B
C	6																								C
D																									D
E																									E
F																									F
G	7																								G
H																									H
I																									I
J																									J
K																									K
L	18																								L
M																									M
N																									N
O																									O
P	19																								P
Q																									Q
R																									R
S																									S
T	30																								T
U																									U
V																									V
W																									W
X	31																								X
Y																									Y
Z																									Z

LIMA TWP  
ROCK COUNTY WI

IF AVAILABLE  
ROCK COUNTY COORDINATES PREFERRED

North \_\_\_\_\_ Elev. \_\_\_\_\_

East \_\_\_\_\_

Hor. Datum \_\_\_\_\_ Vert. Datum \_\_\_\_\_

LATITUDE \_\_\_\_\_ ELLIPS. HT. \_\_\_\_\_

LONGITUDE \_\_\_\_\_

GPS (X) \_\_\_\_\_ TRAVERSE (X) \_\_\_\_\_

BASED ON THE FOLLOWING CONTROL:  
\_\_\_\_\_

PLACE MONUMENT SYMBOL  AT PROPER LOCATION ON ABOVE INDEX

CORNER MONUMENT

WITNESS MONUMENT

BEARINGS ARE BASED ON: \_\_\_\_\_

FIELD BOOK \_\_\_\_\_ PAGE # \_\_\_\_\_

SHEET 1 OF 2

SHOW A PLAN VIEW DRAWING DEPICTING THE CORNER MONUMENT AND SURROUNDING PHYSICAL FEATURES, INCLUDING THE EXCAVATION AREA AND DEPTH.

PLANNING & ZONING COMMITTEE ADOPTED THE ABOVE FORM ON 12/2/1982

CORNER CODE V-11(2)

L1606

(B) Describe any record evidence, monument evidence, occupational evidence, testimonial evidence or any other material evidence you considered, and whether the monument was found or placed.

1977 BARNES VOL 5 PG 291. DID NOT DIG FOR CORNER BECAUSE OF THE CONCRETE CULVERT. SET ON LINE WITH SE & SW CORNERS OF SEC 28 AT SINGLE PROPORTIONATE DISTANCE. SET PK & REFERENCED SAME. EDM 2673.62 & EDM 2673.62 TO THE SE & SW CORNERS OF SEC 28.

1983 BARNES REMONUMENTATION. NB7-50-25W 2673.34 TO SW COR & SB7-50-25E, 2673.34 TO SE CORNERS SEC 28.

1983 WIDOT STH59 R/W PLANS PROJECT #3143-00-21 SHEET 4.12 PK NAIL 283,193.70; 2309,420.90 STA 327+00.5

1985 WIDOT V-11 FOUND PK & REFERENCED SAME. IDENTIFIED CORNER AS STA 327+00.54.

1999 BARNES V-11(1) FOUND THREE OF WIDOT REFERENCE MONUMENTS. BY MEASURING TO THE SE COR OF SEC 28, I DETERMINED THAT WIDOT'S DIAGRAM WAS INCORRECTLY REFERENCED TO NORTH. THE REFERENCE DIAGRAM FOR THE SE COR OF SEC 28 WAS ALSO INCORRECTLY REFERENCED TO NORTH. DID NOT PLACE MONUMENT BECAUSE OF ROAD TRAFFIC. ACCEPTED INTERSECTION OF TWO OF WIDOT'S REFERENCE DISTANCES BASED ON MEASURED DISTANCE TO THE SE COR OF SEC 28. FD SE WIDOT PIN BENT. REPLACED PIN.

IN OCT 2001 FD WIDOT REFERENCE MONUMENTS. PAVEMENT WILL BE GROUND & REPAVED WITHIN A FEW MONTHS. IN APRIL 2002 FD WIDOT REFERENCE MONUMENTS. THE 1977 TIES WERE DESTROYED BY DITCHING OPERATION. SET STEEL SPIKE STAMPED "SURVEY MARK" MIDWAY & ON LINE WITH SE & SW CORNERS OF SEC 28.

C) Was the corner restored through acceptance of (1) an obliterated evidence location, or, (2) a found perpetuated location?

ACCEPTED FD PERPETUTATED LOCATION.

D) Describe any material discrepancy between the location of the corner as restored or reestablished and the location of that corner as previously restored or reestablished by distance and direction. Show the discrepancy on the plan view drawing under (a), above. Show the distances between the corner as previously restored or reestablished and (1) the corner as restored or reestablished, and (2) to at least 4 of the witness monuments shown on the drawing in (a), above.

(E) Was the corner reestablished through lost corner proportionate methods? If so, show the method, including the directions and distances to other public land survey corners used as evidence or used for proportioning the corner location.

I, Donald Barnes, hereby certify that the corner location as identified by the corner code index was determined by me under my direction and control and that this U.S. Public Land Survey Monument Record is correct and complete to the best of my knowledge and belief.

seal

Donald Barnes

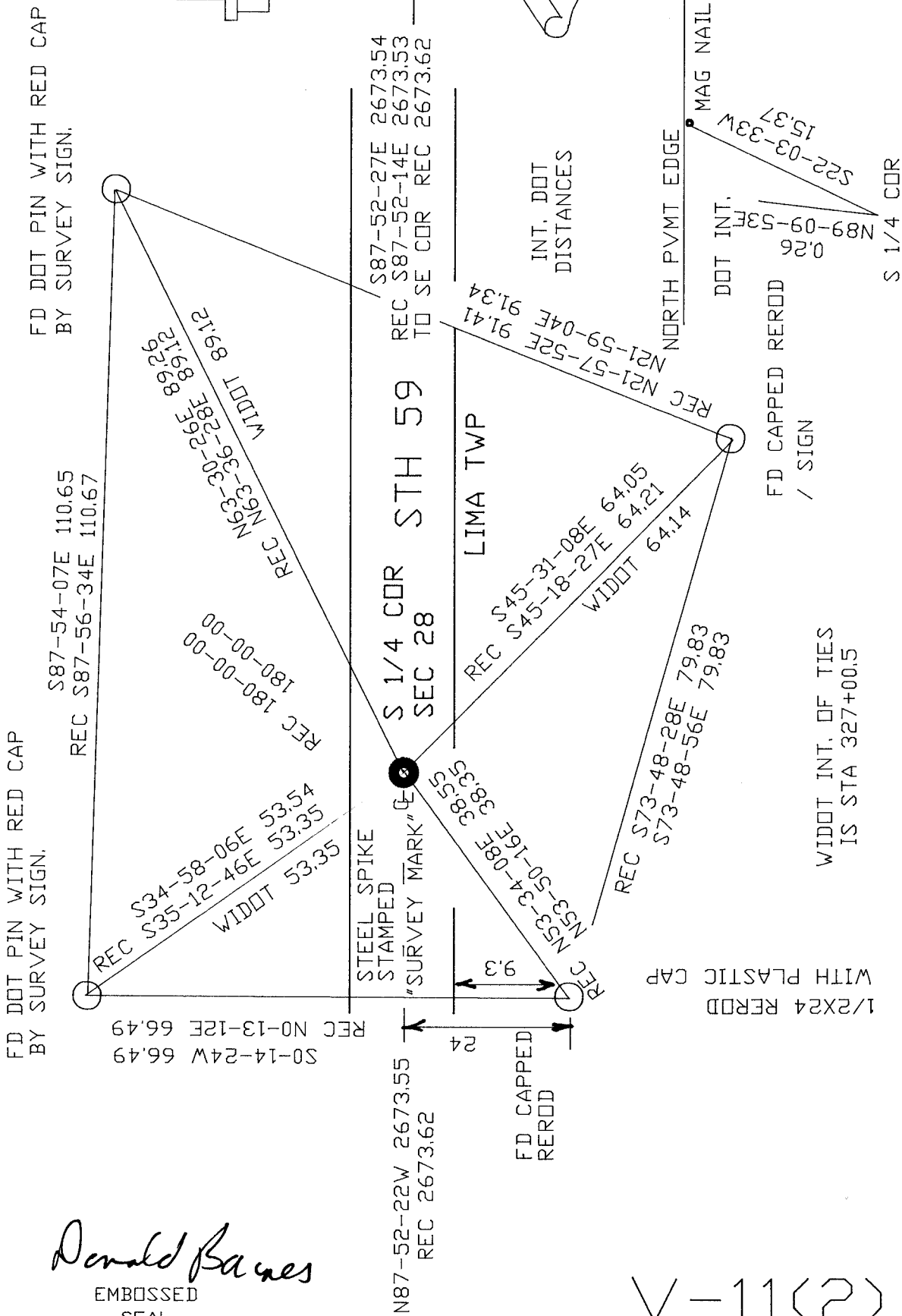
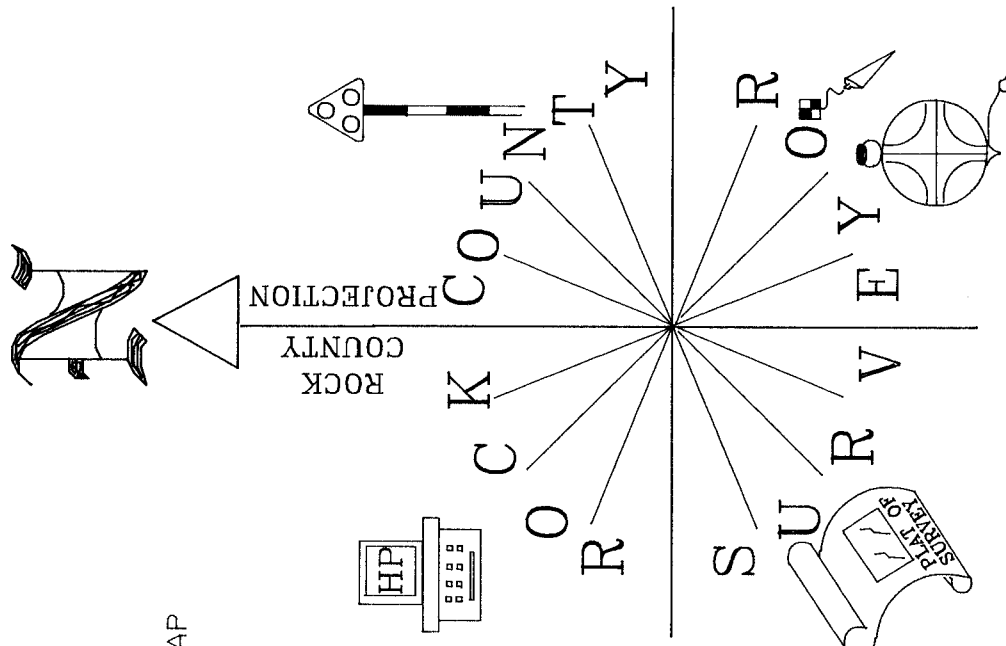
5/31/02

Number of included sheets **1 of 2**

emboss

CORNER CODE **V-11(2)**

A-E 7.08 REQUIREMENT



OBSERVATION SHEET #822  
 OBSERVATION SHEET #7606

*Donald Barnes*  
 EMBOSSED SEAL

5-31-02

V-11(2)