

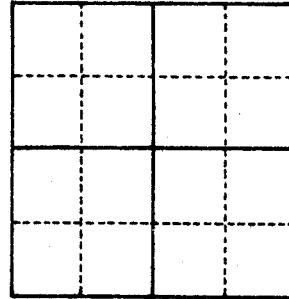
U.S. PUBLIC LAND SURVEY MONUMENT RECORD

For Public Land Survey Corners in
LIMA TWP. T. 4 N., R. 14 E.

For Miscellaneous Corners within
Sec. _____, T. _____ N., R. _____ E.

CORNER CODE INDEX

	1	2	3	4	5	6	7	8	9	10	11	12	13	14	15	16	17	18	19	20	21	22	23	24	25	
A																										
B																										
C	6																									
D		5																								
E			4																							
F				3																						
G					2																					
H																										
I																										
J																										
K																										
L	18																									
M		17																								
N			16																							
O				15																						
P					14																					
Q						13																				
R							12																			
S								11																		
T									10																	
U										9																
V											8															
W												7														
X													6													
Y														5												
Z															4											
																3										
																	2									
																		1								



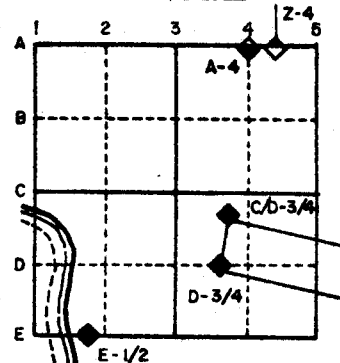
1. Above code numbers are positioned Meander, Claim, or Fractional corners of the section.
2. Township corner code numbers shall be applied to the corners of above typical section.

PLACE MONUMENT SYMBOL (◆) AT PROPER LOCATION ON ABOVE INDEX

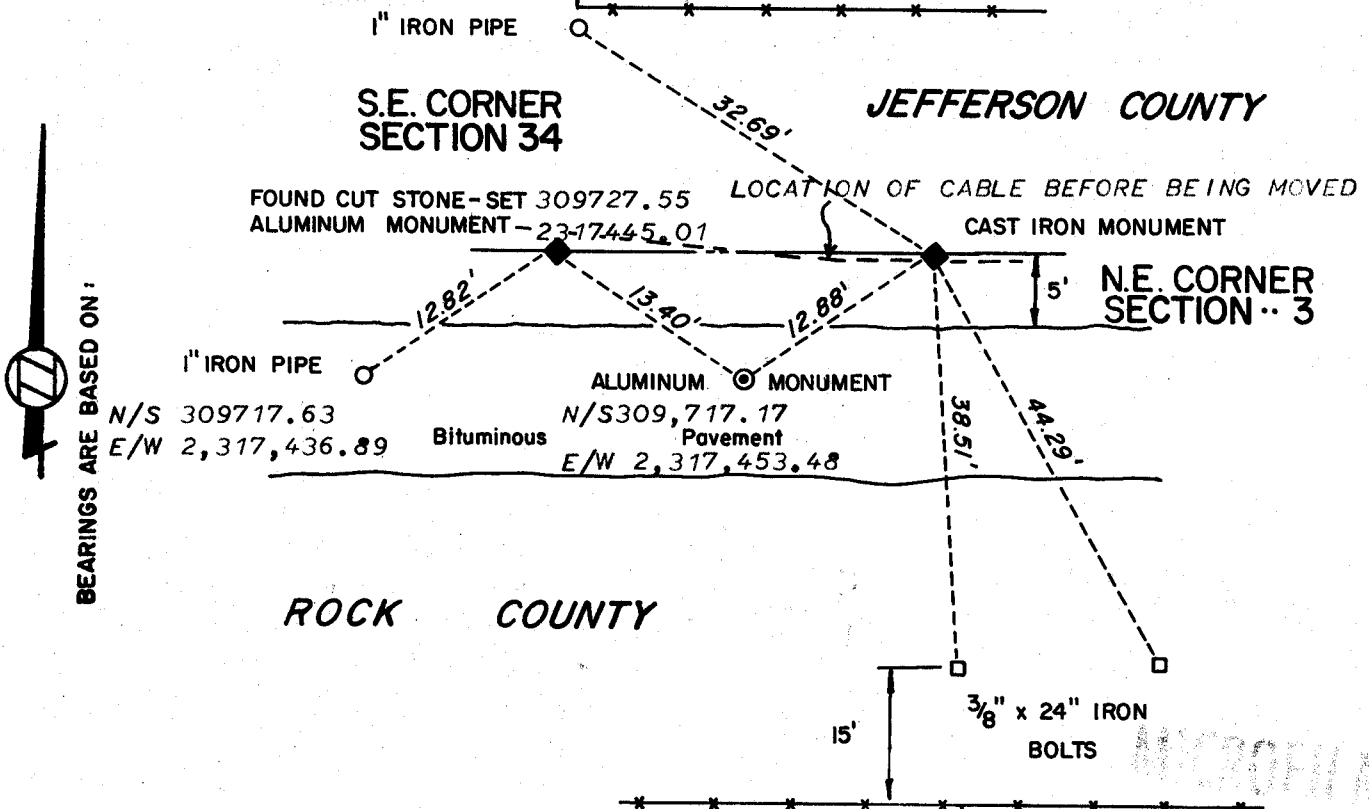
IF AVAILABLE
STATE PLANE COORDINATES

North (Y) 309727.16 Eleve. (Z) _____
 East (X) 2317461.59 Zone SOUTH
 Hor. Datum _____ Vert. Datum _____

EXAMPLE



(a.) ◆ CORNER MONUMENT AS INDICATED ○ WITNESS MONUMENT AS INDICATED



FIELD BOOK 3 PAGE # 17

SHOW A PLAN VIEW DRAWING DEPICTING THE CORNER MONUMENT AND SURROUNDING PHYSICAL FEATURES, INCLUDING THE EXCAVATION AREA AND DEPTH. THE CORNER MONUMENT SHALL HAVE THE FOLLOWING CHARACTERISTICS: 1) HAVE AT LEAST TWO PREDETERMINED BREAK-OFF POINTS. 2) IF BROKEN, LEAVE A PERMANENTLY MAGNETIZED REMNANT AT THE ORIGINAL POINT. 3) MUST BE EXTENDABLE. 4) THE CAP IS INSCRIBED: ROCK COUNTY SURVEY MONUMENT - PENALTY FOR DISTURBING MARKER. 5) OR AN EXISTING CUT LIMESTONE. AN IRON PIPE 1 1/2" x 4'0" (MINIMUM) MAY BE USED IN AREAS WHERE GROUND WATER IS WITHIN ONE FOOT OF THE SURFACE. IF THE CORNER IS OCCUPIED BY AN IMPROVEMENT (MANHOLE, BURIED CABLE, ETC.) ANY DURABLE, DISTINCT MONUMENT MAY BE USED. CORNERS SHALL BE REFERENCED WITH AT LEAST 4 DURABLE WITNESS MONUMENTS. WITNESS MONUMENTS SHALL BE MADE OF CONCRETE, NATURAL STONE, IRON OR OTHER EQUALLY DURABLE MATERIAL, EXCEPT WOOD. DESCRIBE THE CORNER AND THE WITNESS MONUMENTS.

CORNER CODE: A-17(1)

(b.) Describe any record evidence, monument evidence, occupational evidence, testimonial evidence or any other material evidence you considered, and whether the monument was found or placed.

- NW CORNER OF SEC 2 T4NR14E
- 1) June 20, 1836, H. Burnham set a post and marked bearing trees.
 - 2) March 9&10 1870, Ed Ruger found both bearing trees and set irregular hardhead stone point up (stone being 12"X10"X7" at the base & 14" long).
 - 3) September 1972 Mr. Otto Schroeder dug and found nothing
 - 4) March 29, 1977 I set a alum mon on line with the SW corner of sec 35 T5NR14E and the south 1/4 corner of section 35 T5NR14E at record distance.
 - 5) May 20, 1983 set cast iron monument on line with the SW corner (cut limestone) of section 35 T5NR14E and the south 1/4 corner (cut limestone) of section 35 T5NR14E at record distance.

SW CORNER OF SEC 35 T5NR14E

- 1) August 17, 1835, Brink set a post and marked bearing trees.
 - 2) August-December 1886 M. Jones set a cut limestone on line between (continued on next sheet)
- (c.) Was the corner restored through acceptance of (1) an obliterated evidence location, or (2) a found perpetuated location?

The corner was restored through acceptance of the obliterated evidence location.

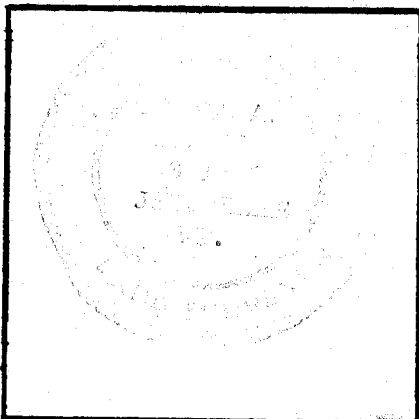
- (d.) Describe any material discrepancy between the location of the corner as restored or reestablished and the location of that corner as previously restored or reestablished by distance and direction. Show the discrepancy on the plan view drawing under (a), above. Show the distances between the corner as previously restored or reestablished and (1) the corner as restored or reestablished, and (2) to at least 4 of the witness monuments shown on the drawing in (a), above.

The drawing in (a) shows the discrepancy of the found cut limestone and the cast iron monument as set now with the alum monuments restored by Otto Schroeder.

- (e.) Was the corner reestablished through lost corner proportionate methods? If so, show the method, including the directions and distances to other public land survey corners used as evidence or used for proportioning in determining the corner location.

NA

I, Donald Barnes, hereby certify that the corner points as identified by the corner code index were, in a field survey on May 20, 1983, established, re-established, monumented, re-monumented, recovered or restored as expressed below and in conformance with the regulations and rules as required in the current manual of survey instructions of the United States Department of Interior, Bureau of Land Management.



COUNTY SURVEYOR FILING DATA

Date of Computer Entry _____

Date Received _____

Date Microfilmed 10/15/1984

Treasurer's Receipt No. _____

Number of Included Sheets 1

AFFIX YOUR LAND SURVEYOR SEAL.

A17(1)

U.S. PUBLIC LAND SURVEY MONUMENT RECORD

For Public Land Survey Corners in the

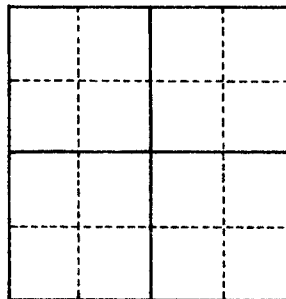
For Miscellaneous Corners within Sec.

LIMA T. 4 N., R. 14 E.

_____, T. _____ N., R. _____ E.

CORNER CODE INDEX

	1	2	3	4	5	6	7	8	9	10	11	12	13	14	15	16	17	18	19	20	21	22	23	24	25
A																									
B																									
C	6																								
D		5																							
E			4																						
F				3																					
G					2																				
H																									
I																									
J																									
K																									
L	18																								
M		17																							
N			16																						
O				15																					
P					14																				
Q						13																			
R							12																		
S								11																	
T									10																
U										9															
V											8														
W												7													
X													6												
Y														5											
Z															4										
																3									
																	2								
																		1							



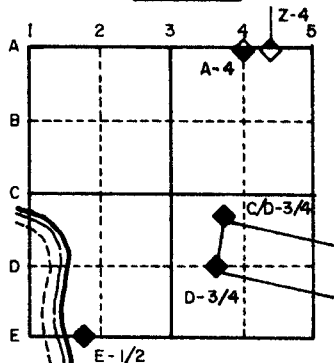
1. Above code numbers are positioned Meander, Claim, or Fractional corners of the section.
2. Township corner code numbers shall be applied to the corners of above typical section.

PLACE MONUMENT SYMBOL (◆) AT PROPER LOCATION ON ABOVE INDEX

IF AVAILABLE
STATE PLANE COORDINATES

North (Y) 309727.16 Eleve. (Z) _____
 East (X) 2317461.59 Zone SOUTH
 Hor. Datum _____ Vert. Datum _____

EXAMPLE



- b) the S $\frac{1}{4}$ corner of sections 35 & 35 at equal distance. Also set new bearing trees.
- 3) September 1972, Otto Schroeder dug with a backhoe and found nothing. He set the corner on a straight line between quarter corners at equal distance.
 - 4) May 20, 1983 I dug and found the cut limestone.

Underground telephone cables were on the north side of the cut limestone and also went thru the NW corner of section 2. The cable destroyed the NW corner of section 2. While locating the stone, the cable was cut. While repairing the cable the cut limestone that was laying horizontally on the north side of the new monument(alum) was removed. Also the alum mon was moved and does not fit the ties set when the stone was found. The cable was moved north of the monuments and now is out of the way.

MICROFILMED

MICROFILMED

SHEET 2 OF 2

CORNER CODE : A-17 (1)