

# U.S. PUBLIC LAND SURVEY MONUMENT RECORD

For Public Land Survey Corners in:

WI ADMINISTRATIVE CODE A-E 7.08 REQUIREMENT

T. 4N., R. 14E

### CORNER CODE INDEX

A	1	2	3	4	5	6	7	8	9	10	11	12	13	14	15	16	17	18	19	20	21	22	23	24	25
B																									
C	6						5							A		3			2						1
D																									
E																									
F																									
G	1						8							9		10			11					12	
H																									
J																									
K																									
L	18						17							16		15			14					13	
M																									
N																									
O																									
P	19						20							21		22			23					24	
Q																									
R																									
S																									
T	30						29							28		27			26					25	
U																									
V																									
W																									
X	31						32							33		34			35					36	
Y																									
Z																									

LIMA TWP  
ROCK COUNTY WI

IF AVAILABLE  
ROCK COUNTY COORDINATES PREFERRED

North \_\_\_\_\_ Elev. \_\_\_\_\_

East \_\_\_\_\_

Hor. Datum \_\_\_\_\_ Vert. Datum \_\_\_\_\_

LATITUDE \_\_\_\_\_ ELLIPS. HT. \_\_\_\_\_


LONGITUDE \_\_\_\_\_

GPS (X) \_\_\_\_\_ TRAVERSE (X) \_\_\_\_\_

BASED ON THE FOLLOWING CONTROL:

PLACE MONUMENT SYMBOL  AT PROPER LOCATION ON ABOVE INDEX

 CORNER MONUMENT

 WITNESS MONUMENT

(a)

BEARINGS ARE BASED ON:

FIELD BOOK \_\_\_\_\_ PAGE # \_\_\_\_\_

SHEET 1 OF 2

SHOW A PLAN VIEW DRAWING DEPICTING THE CORNER MONUMENT AND SURROUNDING PHYSICAL FEATURES, INCLUDING THE EXCAVATION AREA AND DEPTH.

PLANNING & ZONING COMMITTEE ADOPTED THE ABOVE FORM ON 12/2/1982

CORNER CODE E 15(1)

LI528

(B) Describe any record evidence, monument evidence, occupational evidence, testimonial evidence or any other material evidence you considered, and whether the monument was found or placed.

1982 BARNES VOL 6 PG 248 FOUND ALUM. MON. REFERENCE VOL 5 PG 545 FIELD BOOK LIMA PAGE 44.

1982 BARNES E-15 FOUND ALUM. & REFERENCE MONUMENTS.

FOUND ALUM. MON. & 3 REFERENCE TIES. CORNER MAY BE DISTURBED. BY  
Road CONSTRUCTION

C) Was the corner restored through acceptance of (1) an obliterated evidence location, or, (2) a found perpetuated location?

ACCEPTED ALUM.

D) Describe any material discrepancy between the location of the corner as restored or reestablished and the location of that corner as previously restored or reestablished by distance and direction. Show the discrepancy on the plan view drawing under (a), above. Show the distances between the corner as previously restored or reestablished and (1) the corner as restored or reestablished, and (2) to at least 4 of the witness monuments shown on the drawing in (a), above.

(E) Was the corner reestablished through lost corner proportionate methods? If so, show the method, including the directions and distances to other public land survey corners used as evidence or used for proportioning the corner location.

I, Donald Barnes, hereby certify that the corner location as identified by the corner code index was determined by me under my direction and control and that this U.S. Public Land Survey Monument Record is correct and complete to the best of my knowledge and belief.

seal

Donald Barnes

May 28 1999

emboss

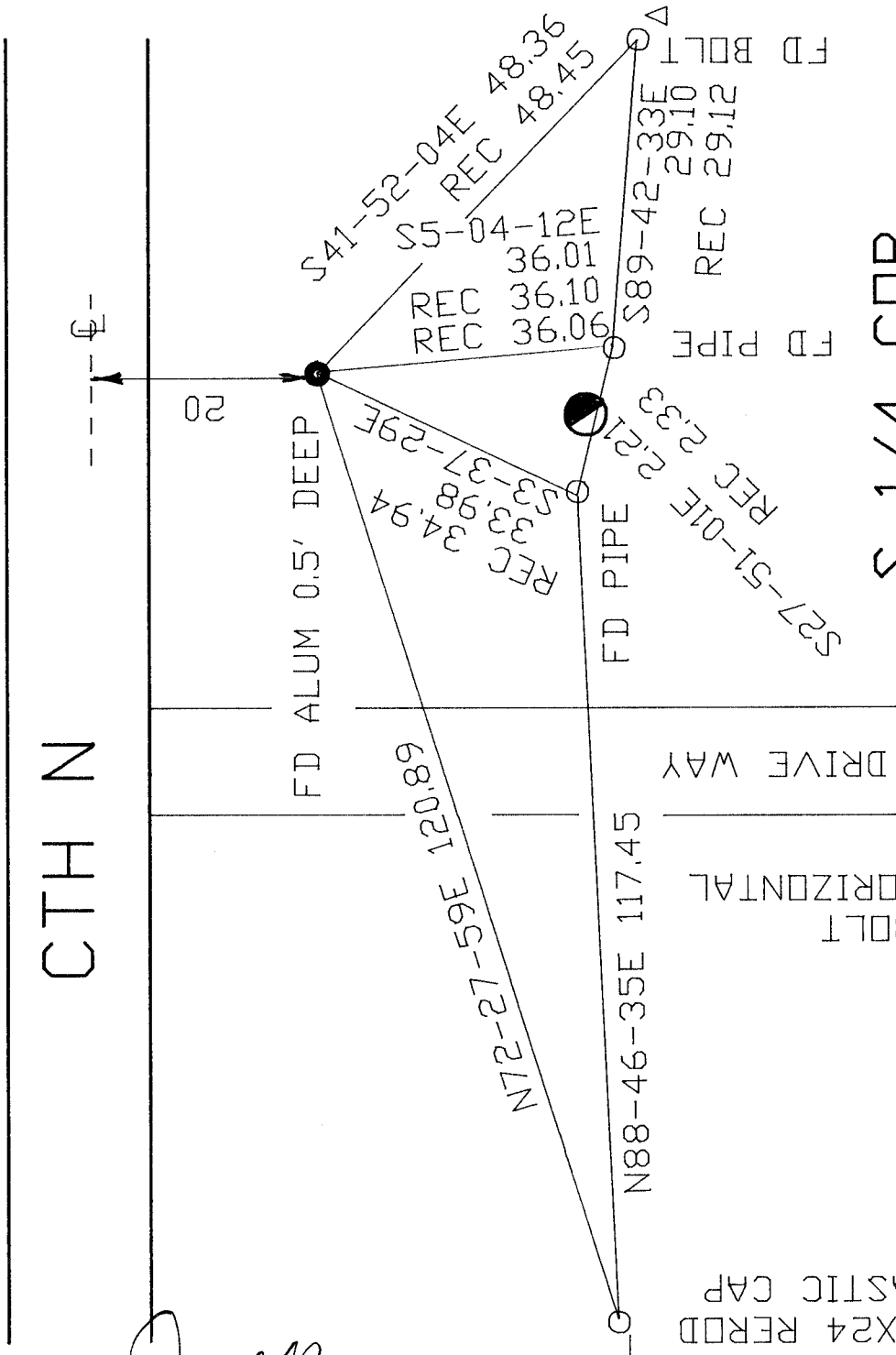
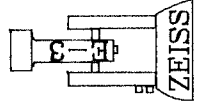
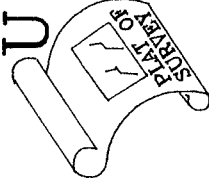
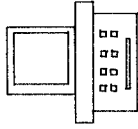
Number of included sheets 1

CORNER CODE **E-15(1)**

N

ASSUMED PROJECTION

ROCK COUNTY SURVEY



S 1/4 COR  
SEC 3  
LIMA TWP

▲ CARSONITE POST

● WOOD R/W POST

OBSERVATION SHEET

*Donald Barnes*  
EMBOSS SEAL  
May 28 1999

E-15(1)