

# U.S. PUBLIC LAND SURVEY MONUMENT RECORD

For Public Land Survey Corners in:

WI ADMINISTRATIVE CODE A-E 7.08 REQUIREMENT

T. 4N., R. 14E

### CORNER CODE INDEX

A	1	2	3	4	5	6	7	8	9	10	11	12	13	14	15	16	17	18	19	20	21	22	23	24	25
B																									
C	6																								
D																									
E																									
F																									
G	1																								
H																									
I																									
J																									
K	18																								
L																									
M																									
N																									
O																									
P	19																								
Q																									
R																									
S																									
T	30																								
U																									
V																									
W																									
X	31																								
Y																									
Z																									

LIMA TWP

ROCK COUNTY WI

IF AVAILABLE  
ROCK COUNTY COORDINATES PERFERRED

North \_\_\_\_\_ Elev. \_\_\_\_\_

East \_\_\_\_\_

Hor. Datum \_\_\_\_\_ Vert. Datum \_\_\_\_\_

LATITUDE \_\_\_\_\_ ELLIPS. HT. \_\_\_\_\_

LONGITUDE \_\_\_\_\_

GPS (X) \_\_\_\_\_ TRAVERSE (X) \_\_\_\_\_

BASED ON THE FOLLOWING CONTROL:

PLACE MONUMENT SYMBOL  AT PROPER LOCATION ON ABOVE INDEX

CORNER MONUMENT

WITNESS MONUMENT

(a)

BEARINGS ARE BASED ON:

### OBSERVATION SHEET

FIELD BOOK \_\_\_\_\_ PAGE # \_\_\_\_\_

SHEET 1 OF 2

SHOW A PLAN VIEW DRAWING DEPICTING THE CORNER MONUMENT AND SURROUNDING PHYSICAL FEATURES, INCLUDING THE EXCAVATION AREA AND DEPTH.

PLANNING & ZONING COMMITTEE ADOPTED THE ABOVE FORM ON 12/2/1982

CORNER CODE V-11(1)

LI606

(B) Describe any record evidence, monument evidence, occupational evidence, testimonial evidence or any other material evidence you considered, and whether the monument was found or placed.

1977 BARNES VOL 5 PG 291. DID NOT DIG FOR CORNER BECAUSE OF THE CONCRETE CULVERT. SET ON LINE WITH SE & SW CORNERS OF SEC 28 AT SINGLE PROPORTIONATE DISTANCE. SET PK & REFERENCED SAME. EDM 2673.62 & EDM 2673.62 TO THE SE & SW CORNERS OF SEC 28.

1983 BARNES REMONUMENTATION. N87-50-25W 2673.34 TO SW COR & S87-50-25E 2673.34 TO SE CORNERS SEC 28.

19?? WIDOT V-11 FOUND PK & REFERENCED SAME. IDENTIFIED CORNER AS STA 327+00.54.

FOUND THREE OF WIDOT REFERENCE MONUMENTS. BY MEASURING TO THE SE COR OF SEC 28, I DETERMINED THAT WIDOT'S DIAGRAM WAS INCORRECTLY REFERENCED TO NORTH. THE REFERENCE DIAGRAM FOR THE SE COR OF SEC 28 WAS ALSO INCORRECTLY REFERENCED TO NORTH. DID NOT PLACE MONUMENT BECAUSE OF ROAD TRAFFIC.

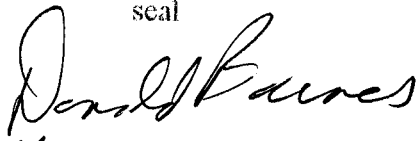
C) Was the corner restored through acceptance of (1) an obliterated evidence location, or, (2) a found perpetuated location?

ACCEPTED INTERSECTION OF TWO OF WIDOT'S REFERENCE DISTANCES BASED ON MEASURED DISTANCE TO THE SE COR OF SEC 28.

D) Describe any material discrepancy between the location of the corner as restored or reestablished and the location of that corner as previously restored or reestablished by distance and direction. Show the discrepancy on the plan view drawing under (a), above. Show the distances between the corner as previously restored or reestablished and (1) the corner as restored or reestablished, and (2) to at least 4 of the witness monuments shown on the drawing in (a), above.

(E) Was the corner reestablished through lost corner proportionate methods? If so, show the method, including the directions and distances to other public land survey corners used as evidence or used for proportioning the corner location.

I, Donald Barnes, hereby certify that the corner location as identified by the corner code index was determined by me under my direction and control and that this U.S. Public Land Survey Monument Record is correct and complete to the best of my knowledge and belief.

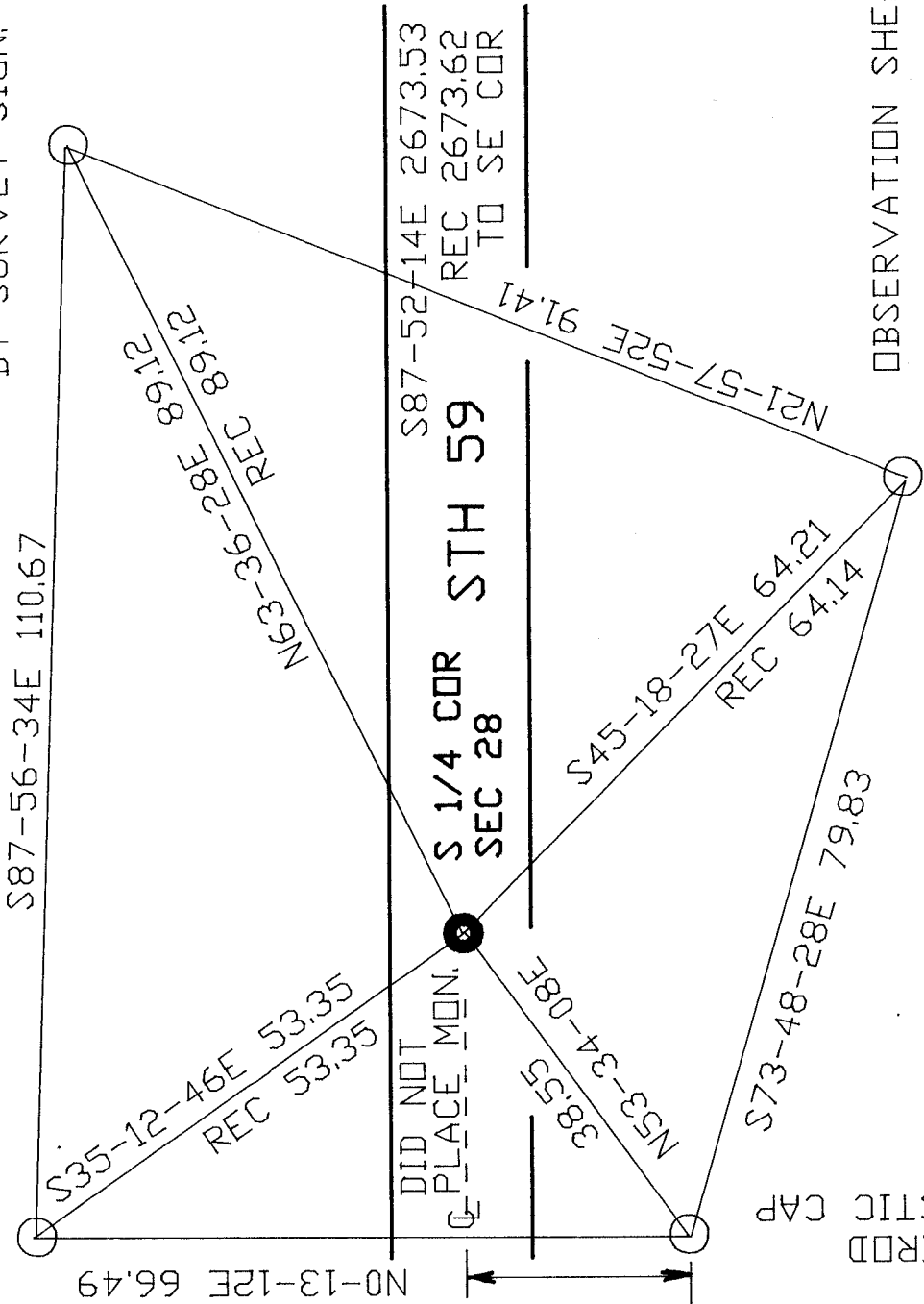
seal  
  
May 12 1999  
emboss

Number of included sheets 1

CORNER CODE V-11(1)

FD DOT PIN WITH RED CAP  
BY SURVEY SIGN.

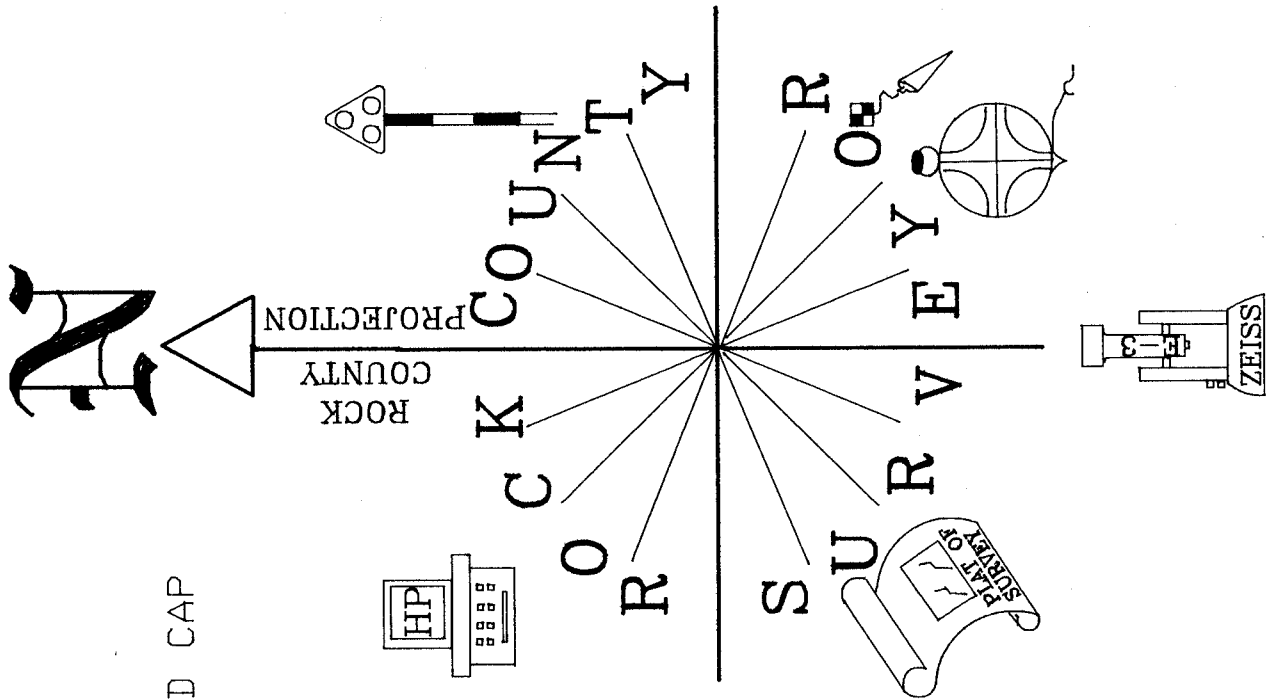
FD DOT PIN WITH RED CAP  
BY SURVEY SIGN.



1/2X24 REROD WITH PLASTIC CAP

FD BENT DOT PIN BY SURVEY SIGN. REPLACED WITH 1/2X24 REROD & PLASTIC CAP

OBSERVATION SHEET



(1)11-V

Donald Barnes  
May 12, 1999