

U.S. PUBLIC LAND SURVEY MONUMENT RECORD

For Public Land Survey Corners in:

WI ADMINISTRATIVE CODE A-E 7.08 REQUIREMENT

T. 5 N., R. 4 E

CORNER CODE INDEX

| | | | | | | | | | | | | | | | | | | | | | | | | |
|---|----|----|---|---|---|---|---|---|----|----|----|----|----|----|----|----|----|----|----|----|----|----|----|----|
| A | 2 | 3 | 4 | 5 | 6 | 7 | 8 | 9 | 10 | 11 | 12 | 13 | 14 | 15 | 16 | 17 | 18 | 19 | 20 | 21 | 22 | 23 | 24 | 25 |
| B | | | | | | | | | | | | | | | | | | | | | | | | |
| C | 6 | | | | | | | | | | | | | | | | | | | | | | | |
| D | | | | | | | | | | | | | | | | | | | | | | | | |
| E | | | | | | | | | | | | | | | | | | | | | | | | |
| F | | | | | | | | | | | | | | | | | | | | | | | | |
| G | 1 | | | | | | | | | | | | | | | | | | | | | | | |
| H | | | | | | | | | | | | | | | | | | | | | | | | |
| J | | | | | | | | | | | | | | | | | | | | | | | | |
| K | | | | | | | | | | | | | | | | | | | | | | | | |
| L | 18 | | | | | | | | | | | | | | | | | | | | | | | |
| M | | | | | | | | | | | | | | | | | | | | | | | | |
| N | | | | | | | | | | | | | | | | | | | | | | | | |
| O | | | | | | | | | | | | | | | | | | | | | | | | |
| P | 19 | | | | | | | | | | | | | | | | | | | | | | | |
| Q | | | | | | | | | | | | | | | | | | | | | | | | |
| R | | 20 | | | | | | | | | | | | | | | | | | | | | | |
| S | | | | | | | | | | | | | | | | | | | | | | | | |
| T | | | | | | | | | | | | | | | | | | | | | | | | |
| U | 30 | | | | | | | | | | | | | | | | | | | | | | | |
| V | | | | | | | | | | | | | | | | | | | | | | | | |
| W | | | | | | | | | | | | | | | | | | | | | | | | |
| X | | | | | | | | | | | | | | | | | | | | | | | | |
| Y | | | | | | | | | | | | | | | | | | | | | | | | |
| Z | | | | | | | | | | | | | | | | | | | | | | | | |

KOSHKONONG TWP
ROCK COUNTY WI

IF AVAILABLE
ROCK COUNTY COORDINATES PREFERRED

North _____ Elev. _____

East _____

Hor. Datum _____ Vert. Datum _____

LATITUDE _____ ELLIPS. HT. _____

LONGITUDE _____

GPS (X) _____ TRAVERSE (X) _____

BASED ON THE FOLLOWING CONTROL:

PLACE MONUMENT SYMBOL AT PROPER LOCATION ON ABOVE INDEX

CORNER MONUMENT

WITNESS MONUMENT

(a)

THOMAS WOLLIN, JEFFERSON COUNTY SURVEYOR,
PROVIDED THE STATE PLANE COORDINATES FOR
CORNER CODE # 5501 COR S1/4 SEC 35 T 5 N R 4 E

STATE PLANE COORDINATES N/S 389,674.316
NAD 1983/91 OF RECORD E/W 2,288,547.199

I DONALD BARNES CONVERTED THE ABOVE
COORDINATES TO THE FOLLOWING:

LATITUDE 42-50-36.13219
LONGITUDE 88-48-23.84381
MERIDIAN CONV. 0-49-11.9
SCALE FACTOR 0.9999796330

ROCK COUNTY COORDINATES (NAD 1983/91)

N/S 327,726.051
E/W 551,236,279
SCALE 1,000017971

CONVERGENCE: THE ANGULAR DIFFERENCE
BETWEEN THE GEODETIC NORTH & THE ROCK
COUNTY MERCATOR NORTH

\oplus DEG 0 MIN 10 SEC 50.2

Donald Barnes
2/12/03

BEARINGS ARE BASED ON:

FIELD BOOK _____ PAGE # _____

SHEET 1 OF 1

SHOW A PLAN VIEW DRAWING DEPICTING THE CORNER MONUMENT AND SURROUNDING
PHYSICAL FEATURES, INCLUDING THE EXCAVATION AREA AND DEPTH.

PLANNING & ZONING COMMITTEE ADOPTED THE ABOVE FORM ON 12/2/1982

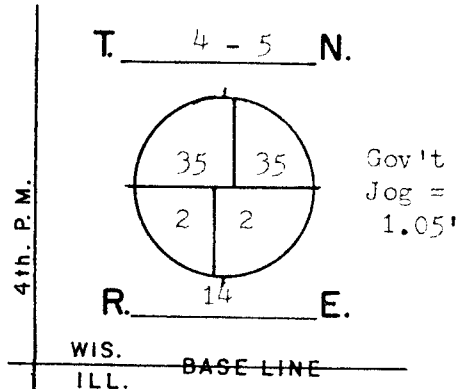
File in LIMA
CORNER CODE A 19/20

GOVERNMENT LAND CORNER RECORD*

JEFFERSON COUNTY

CORNER NO. 5501

TYPE OF MONUMENT Aluminum & Limestone
 STATE PLANE COORDINATES N. 309674.316
NAD 1983/91 E. 2288547.199 S $\frac{1}{4}$ -35
 ELEVATION M.S.L. DATUM: _____
 Grid-Ground 1.0000567126
 FIELD BOOK Koshkonong p. 47
 DRAWN BY TRW



BASIS FOR MONUMENTATION

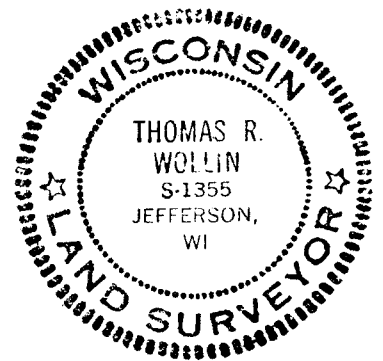
Original Survey, 1834-37, Wood Post & Bearing Trees
 Resurvey of Koshkonong Township, by Milo C. Jones,
 August-December, 1886. Field notes say that Bearing
 Tree evidence was found. From this evidence a
 Limestone monument, Approx. 6" by 36" long with a
 squared finished top, was set for the corner. Notes
 recorded in Register of Deeds, Miscellaneous Volume 1,
 pages 389-412.

1972, The stone was found, about even with ground
 surface on the East embankment of the road. A steel
 post & sign was set next to the stone.

1977, Rock Co. Surveyor, established the corner for
 N $\frac{1}{4}$ -2, 1.05' West of the corner stone to S $\frac{1}{4}$ -35. Corner
 was set equal distance between section corners of
 section 2. An Aluminum Monument was set for the
 corner.

3/18/2002, G.P.S. coordinates are assigned. A Topcon
 GP-SX1 single-frequency receiver was used.

SEAL:

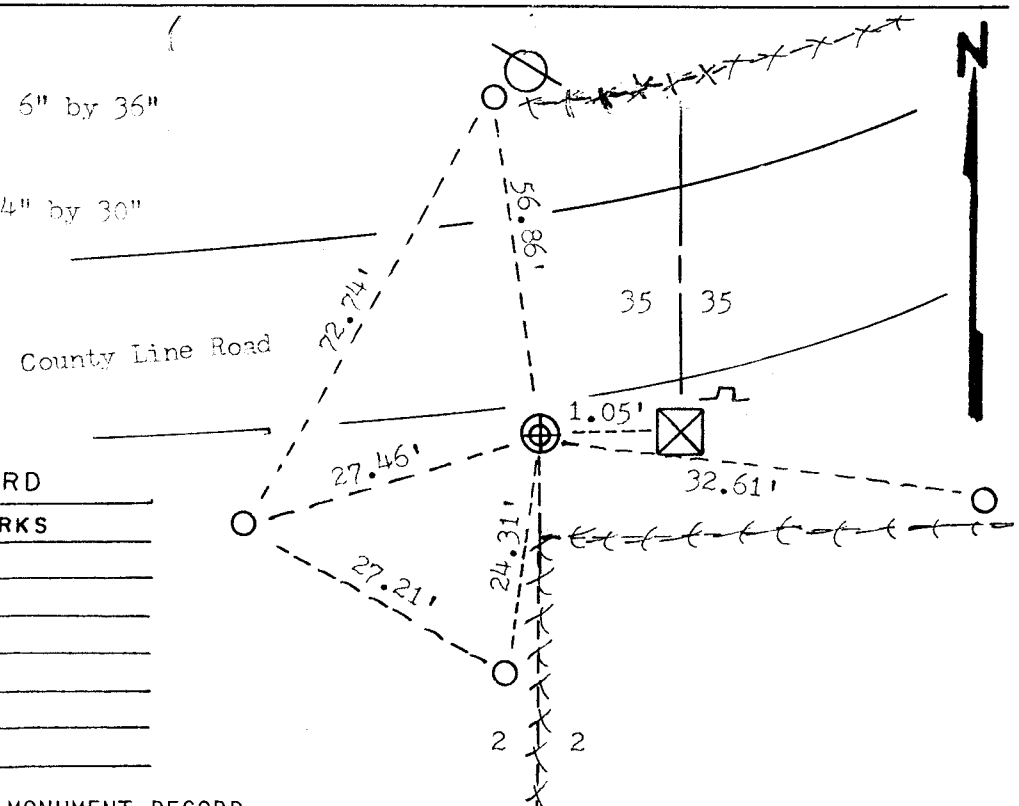


DATA SHOWN HERE ON
 CERTIFIED CORRECT:

Thomas R. Wollin
 REGISTERED LAND SURVEYOR
 DATED 5/12/1982

LOCATION SKETCH

- SQUARE CUT LIMESTONE 6" by 36"
- CONCRETE / BRASS CAP
- ALUMINUM MAGNETIZED 4" by 30"
- IRON PIPE 1 $\frac{1}{2}$ " by 24"
- RR SPIKE
- PK NAIL
- *** FENCE
- UTILITY POLE
- STEEL POST / SIGN



MAINTENANCE RECORD

| DATE | INIT. | REMARKS |
|------|-------|---------|
| | | |
| | | |
| | | |
| | | |
| | | |
| | | |

* U.S. PUBLIC LAND SURVEY MONUMENT RECORD

File in Lima
A/19/20