

U.S. PUBLIC LAND SURVEY MONUMENT RECORD

For Public Land Survey Corners in the

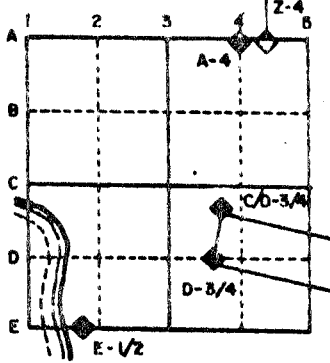
T. 4 N., R. 14 E.

CORNER CODE INDEX

	1	2	3	4	5	6	7	8	9	10	11	12	13	14	15	16	17	18	19	20	21	22	23	24	25
A																									
B																									
C	6																								
D		5																							
E			4																						
F				3																					
G					2																				
H																									
I	7																								
J		8																							
K			9																						
L				10																					
M					11																				
N						12																			
O							13																		
P								14																	
Q									15																
R										16															
S											17														
T												18													
U													19												
V														20											
W															21										
X																22									
Y																	23								
Z																		24							
																			25						
																				26					
																					27				
																						28			
																							29		
																								30	
																									31
																									32
																									33
																									34
																									35
																									36

PLACE MONUMENT SYMBOL (◆) AT PROPER LOCATION ON ABOVE INDEX

EXAMPLE



LIMA TWP
ROCK COUNTY WI

IF AVAILABLE STATE PLANE COORDINATES

North (Y) _____ Eleve. (Z) _____
 East (X) _____ Zone _____
 Hor. Datum _____ Vert. Datum _____

a.)

◆ CORNER MONUMENT

○ WITNESS MONUMENT

BEARINGS ARE BASED ON:

See Reverse Side

SHEET ___ OF ___

CORNER CODE: A17

Dual

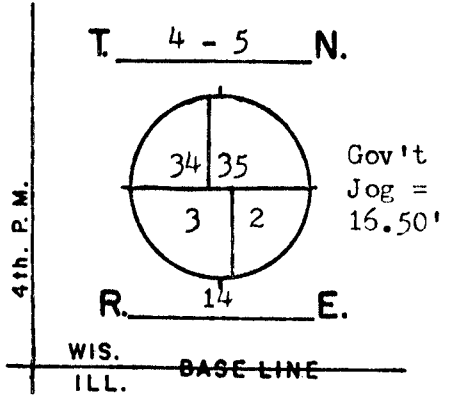
MAP #

GOVERNMENT LAND CORNER RECORD*

JEFFERSON COUNTY

TYPE OF MONUMENT Aluminum Magnetized
 STATE PLANE COORDINATES N.
E.
 ELEVATION M.S.L. DATUM: _____
 THETA ANGLE _____
 FIELD BOOK Koshkonong p. 49
 DRAWN BY TRW

CORNER NO. 49



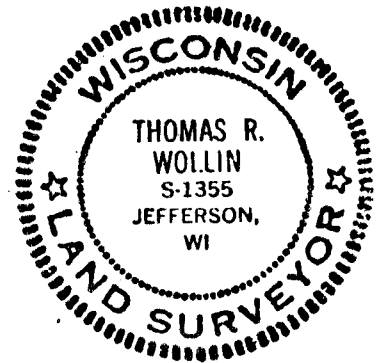
BASIS FOR MONUMENTATION

Original Survey, 1834-37, Wood Post & Bearing Trees Resurvey of Koshkonong Township, by Milo C. Jones, August-December, 1886. Field notes say that the corner was established on a straight line and equal distance between section corners. A Limestone Monument, Aprox. 6" by 36" long with a squared finished top, was set for the corner. Notes recorded in Register of Deeds, Miscellaneous Volume 1, pages 389-412.

1972, Dug for the corner stone to SW-35 with a backhoe, but found no evidence of the corner or the stone. Corner was re-established on a straight-line and equal distance between the section corners and an iron pipe was set for the corner

1980, I replaced the iron pipe with an Aluminum Magnetized Monument. Corner to NE-3 was established by the Rock County Surveyor at the Jog distance and on the Town line.

SEAL:



DATA SHOWN HERE ON CERTIFIED CORRECT:

Thomas R. Wollin
 REGISTERED LAND SURVEYOR
 DATED 5/13/1982

MICROFILMED

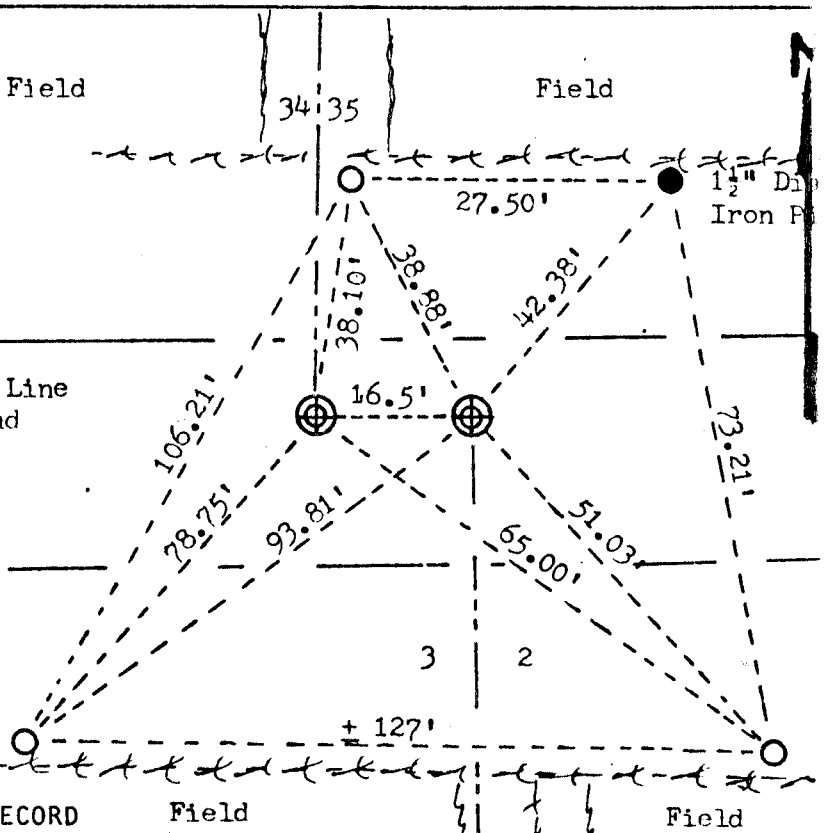
FILE B-1

SECTION 3

LIMA

LOCATION SKETCH

- SQUARE CUT LIMESTONE
- CONCRETE / BRASS CAP
- ALUMINUM MAGNETIZED 4" by 30"
- IRON PIPE 1" by 24"
- RR SPIKE
- PK NAIL
- FENCE
- UTILITY POLE
- STEEL POST / SIGN



MAINTENANCE RECORD

DATE	INIT.	REMARKS

* U.S. PUBLIC LAND SURVEY MONUMENT RECORD

A17