

# MICROFILMED PLAT AND RECORD

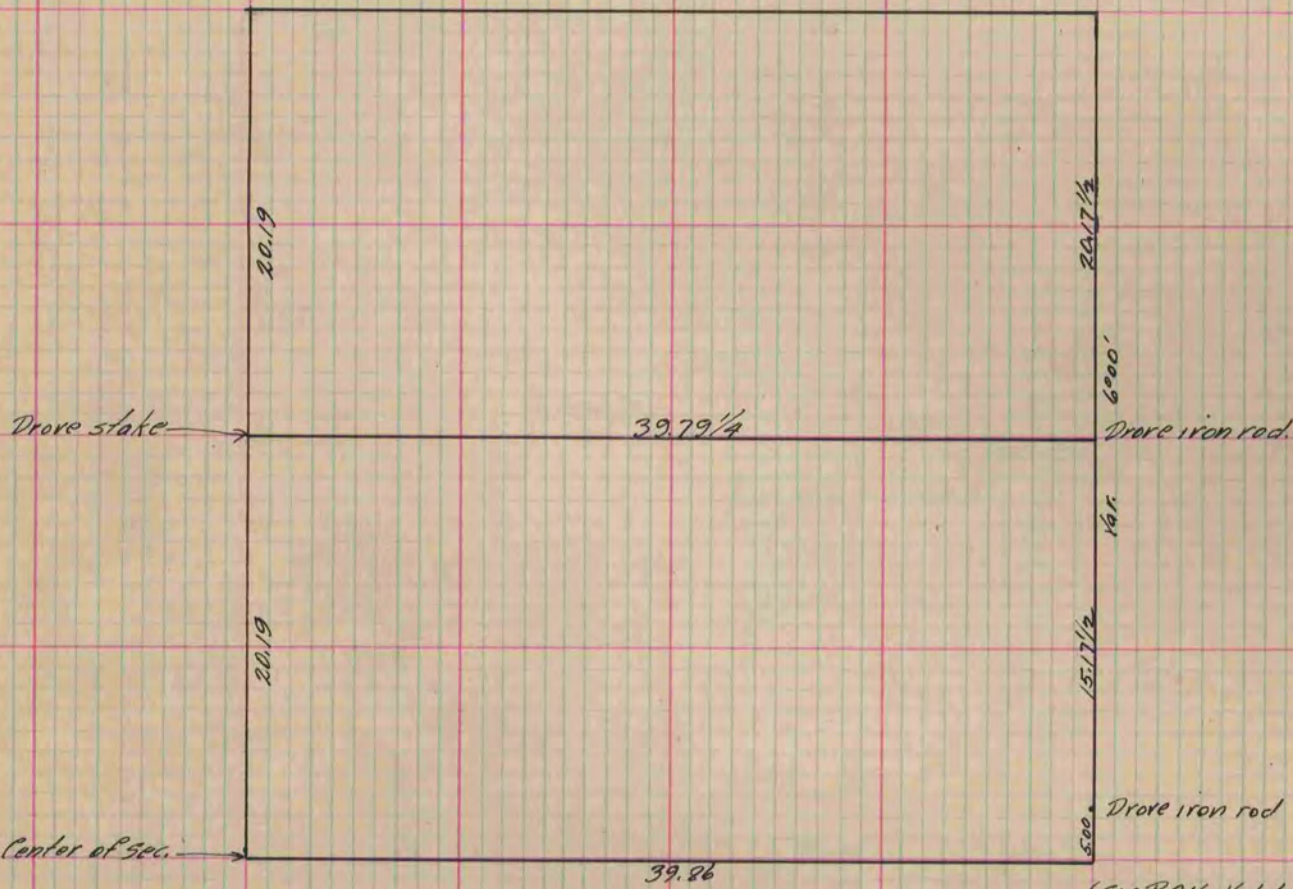
Of a Survey on <sup>NE 1/4</sup> Section 27 T. 4 R. 10 E. of the 4 P. M. in Union Township  
 Rock County, Wisconsin, made November the 15 1882

I hereby certify that the following is a correct record of said survey as made by me.

COUNTY BUILDING  
 CITY OF JANESVILLE

(Signed) Edward Roger  
 R.H.B.

County Surveyor.



Copied from P. 321 Vol. 2 County Surveyor's Record.