

MICROFILMED

PLAT AND RECORD

389
V-2

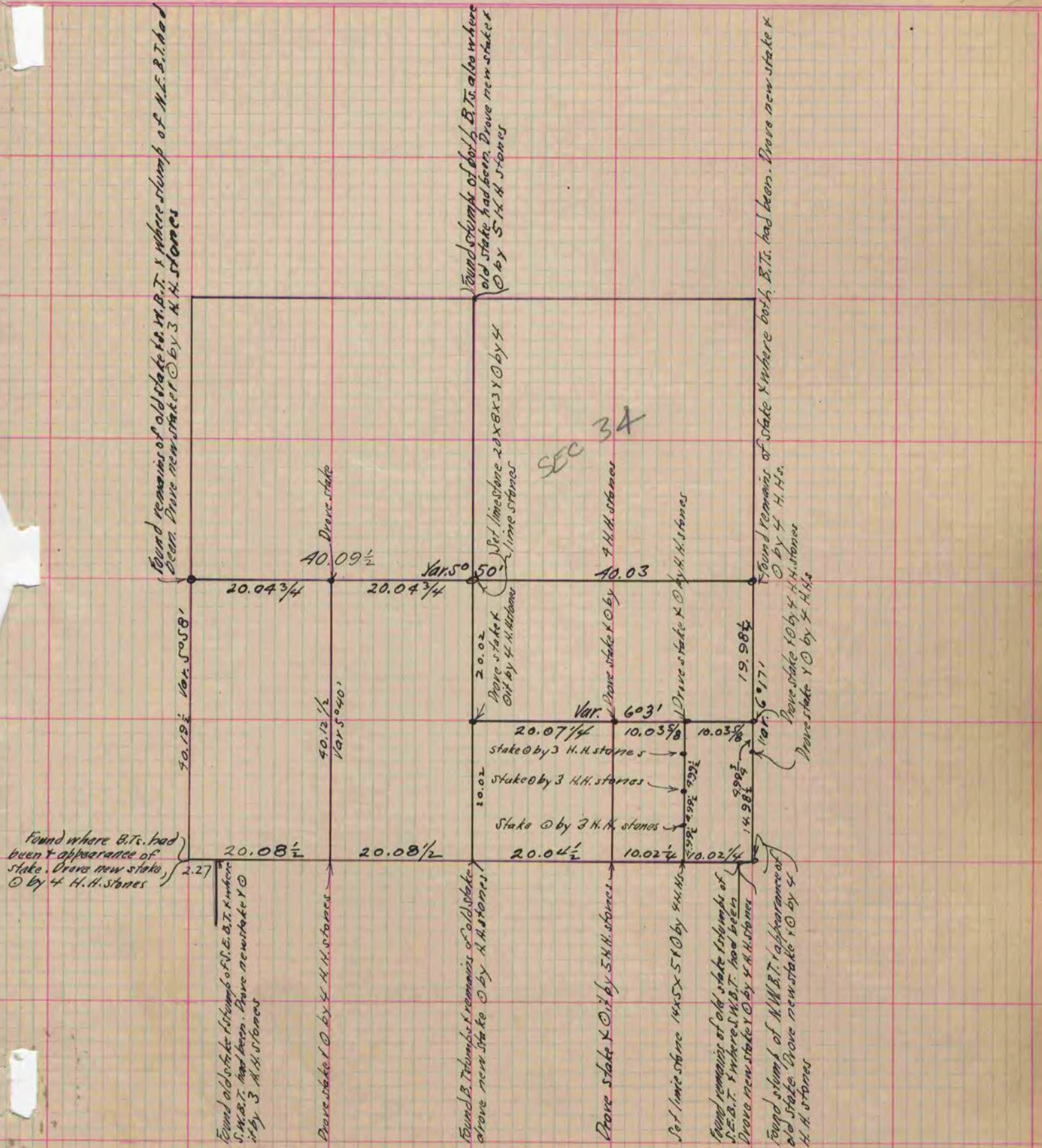
Sec. 34-5-12 & N line
Of a Survey on Section 3 T 4 R 12 E. of the 4 P. M. in Fulton Township

COUNTY BUILDING
CITY OF JANESVILLE

Rock County, Wisconsin, made May the 20 1884

I hereby certify that the following is a correct record of said survey as made by me.

(Signed) Edward Ruger
R.H.B. County Surveyor.



Copied from P. 313 Vol. 2. County Surveyors Record.