

MICROFILMED PLAT AND RECORD

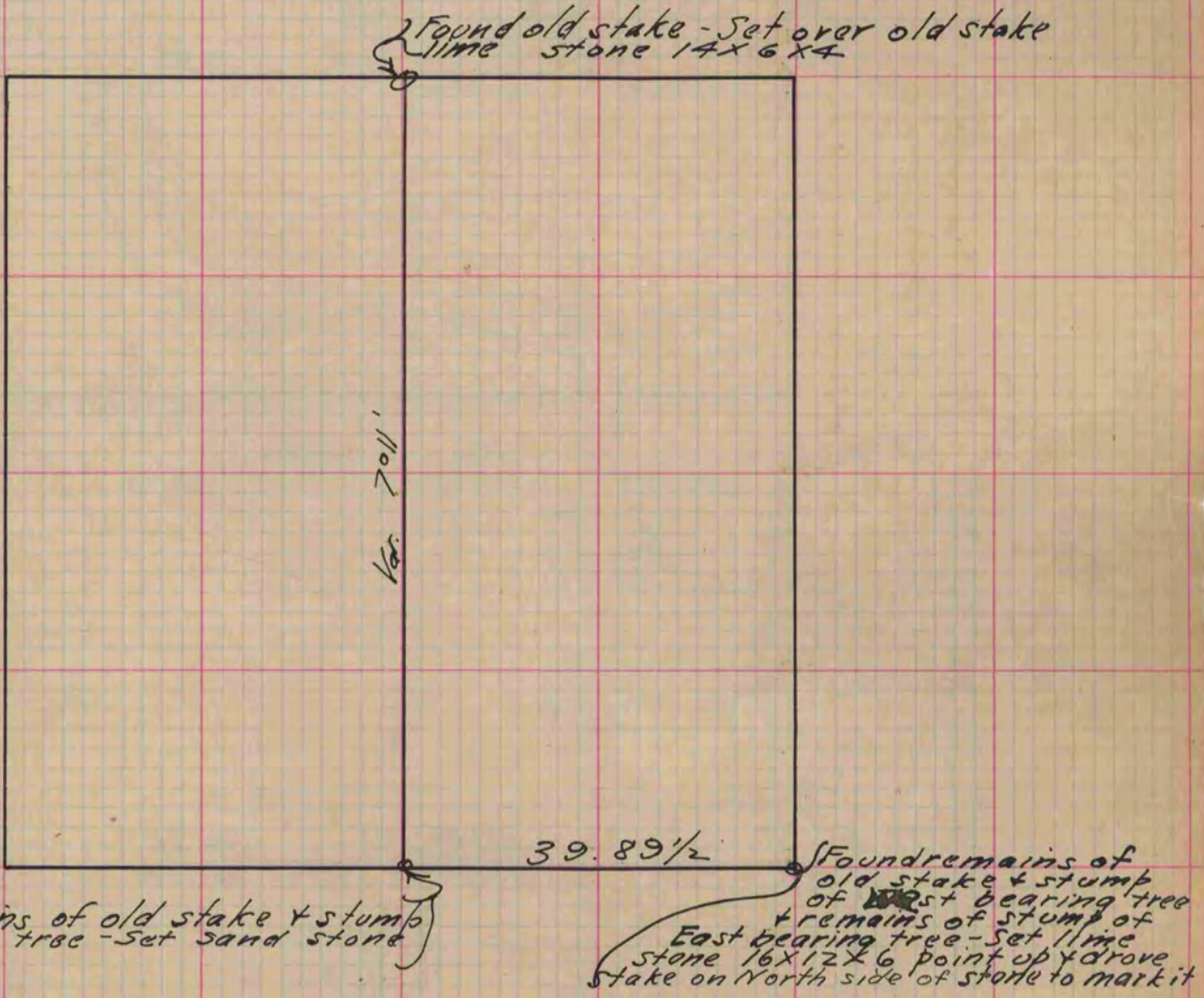
39
V-2

Of a Survey on Section 33 T 1 R 10 E. of the 4 P. M. in Avon Township
Rock County, Wisconsin, made July the 29 1870

I hereby certify that the following is a correct record of said survey as made by me.

COUNTY BUILDING
CITY OF JANESVILLE

(Signed) Edward Roger Deputy
R.H.B. County Surveyor.



Copied from Page 27 Vol. 2. Original County Surveyors Record