

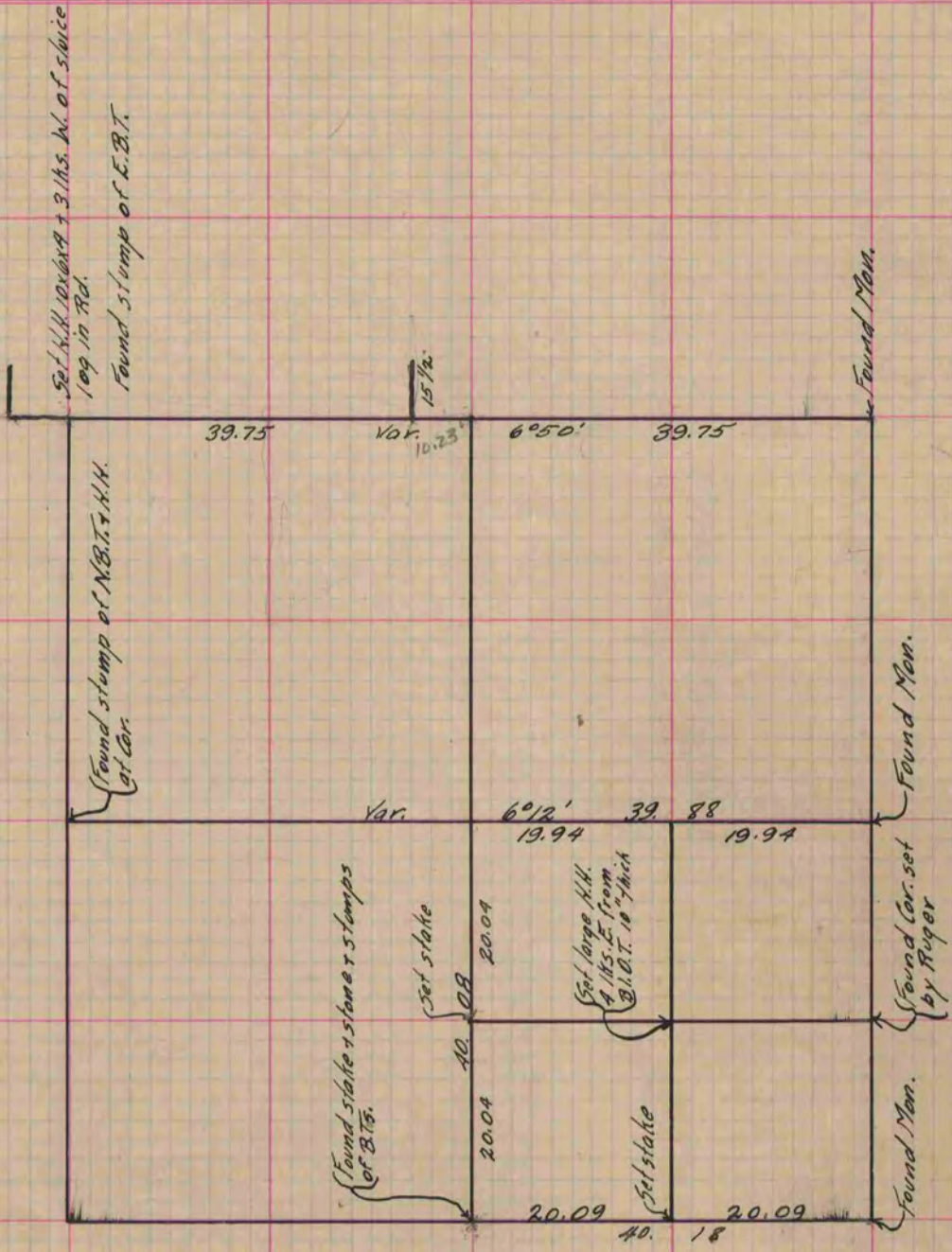
Of a Survey on Section 1 T 3 R 12 E. of the 4 P. M. in Janesville Township
Rock County, Wisconsin, made June the 18th 1872

I hereby certify that the following is a correct record of said survey as made by me.

COUNTY BUILDING
CITY OF JANESVILLE

(Signed) R. K. Lee
R. H. B.

Deputy
County Surveyor.



Copied from Page 56 Vol. 2 Original County Surveyor's Record.