

COUNTY BUILDING
CITY OF JANESVILLE

Of a Survey on Section 23 T 3 R 14 E. of the 4 P. M. in JOHNSTOWN Township

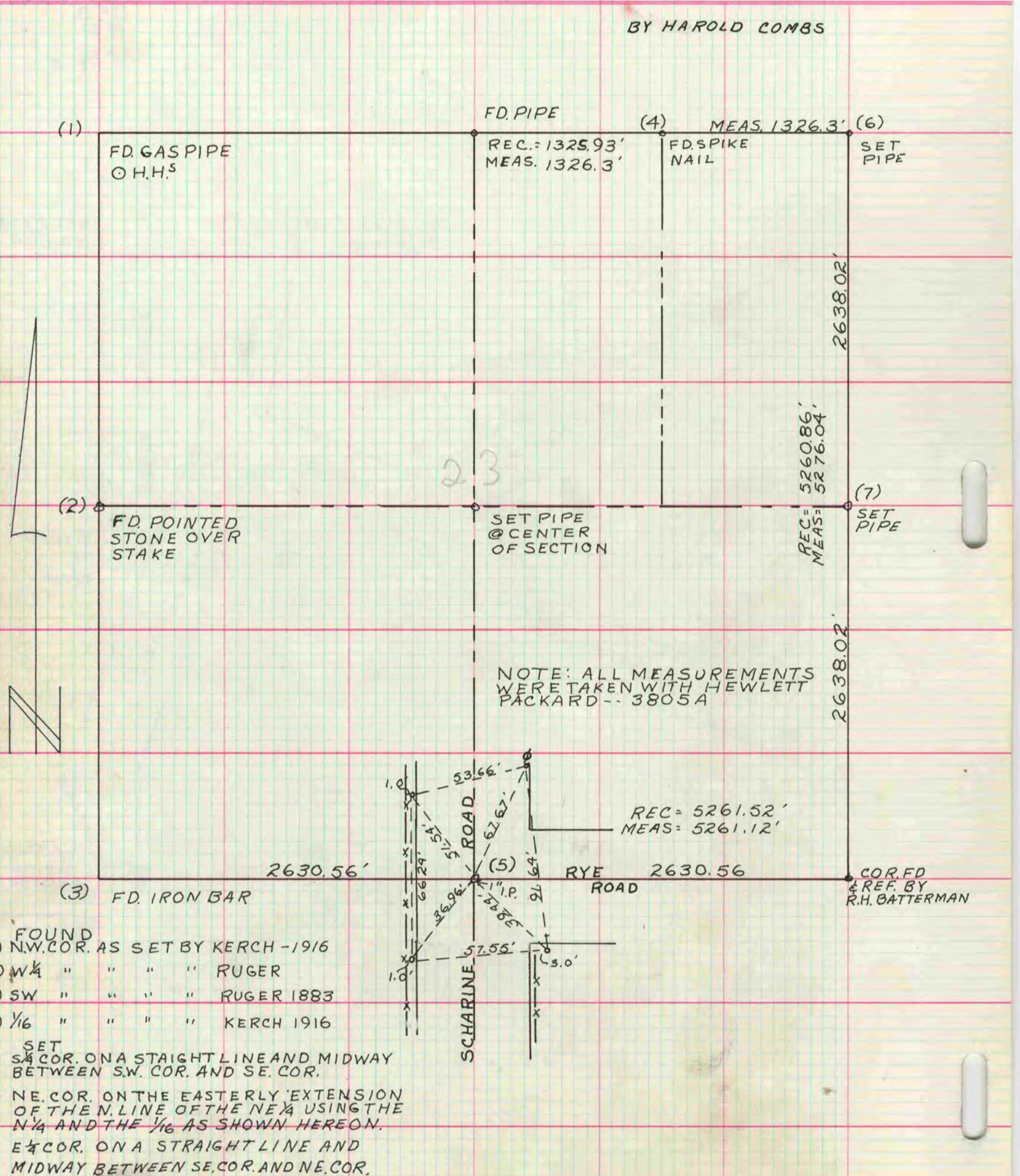
Rock County, Wisconsin, made MAY the 7TH 19 75

I hereby certify that the following is a correct record of said survey as made by me.

MICROFILMED

Atto Schroeder
County Surveyor.

BY HAROLD COMBS



- FOUND
- (1) N.W. COR. AS SET BY KERCH - 1916
 - (2) W 1/4 " " " " RUGER
 - (3) SW " " " " RUGER 1883
 - (4) 1/16 " " " " KERCH 1916
- SET
- (5) S 1/4 COR. ON A STRAIGHT LINE AND MIDWAY BETWEEN S.W. COR. AND SE. COR.
 - (6) NE. COR. ON THE EASTERLY EXTENSION OF THE N. LINE OF THE NE 1/4 USING THE N 1/4 AND THE 1/16 AS SHOWN HEREON.
 - (7) E 1/4 COR. ON A STRAIGHT LINE AND MIDWAY BETWEEN SE. COR. AND NE. COR.