

PLAT AND RECORD

415

VOL. 5

Of a Survey on Section 36 T 1 N R 13 E. of the 4 P. M. in TURTLE Township
Rock County, Wisconsin, made APRIL the 28 1978

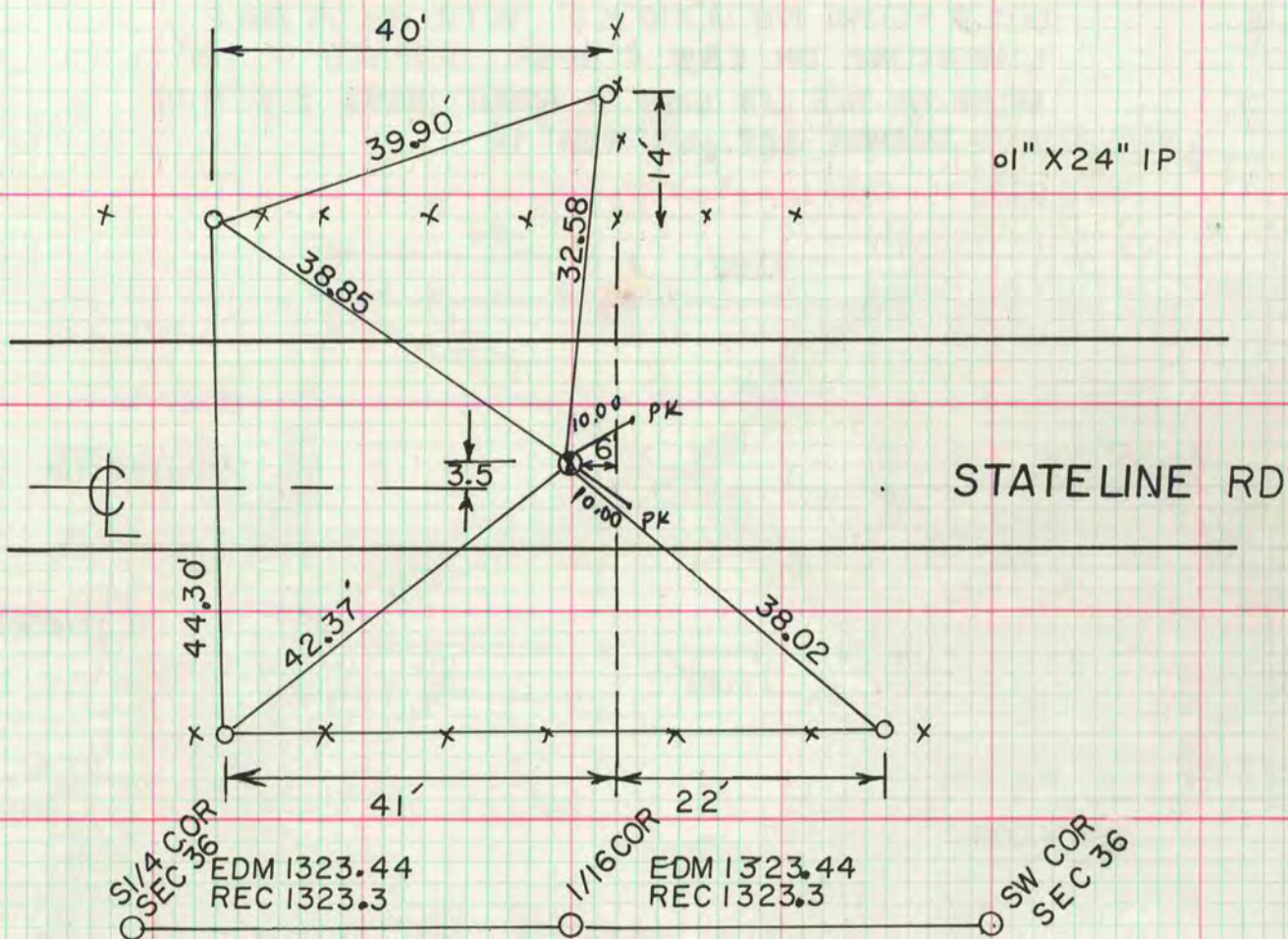
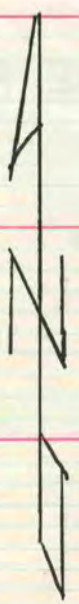
I hereby certify that the following is a correct record of said survey, as made by me.
COUNTY BUILDING
CITY OF JANESVILLE

Donald Barnes
DONALD A. BARNES
S-1216
JANESVILLE
COUNTY SURVEYOR

THE GEN. D. BARNARD COMPANY, ST. LOUIS

S 1/16 CORNER OF THE SE 1/4 OF SEC 36
FOUND 3 SMALL STONES & REMAINS OF STAKE. SET 1" X 24" IP

MICROFILMED



S 1/4 CORNER OF SEC 36

SET ALUM MON
DUG 4' DEEP & FOUND NOTHING. SET ON LINE WITH THE SE & S 1/16 OF THE SE 1/4 OF SEC 36 AT SINGLE PROPORTIONATE DISTANCE.

