

# PLAT AND RECORD

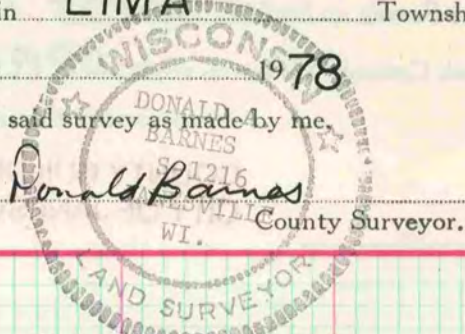
**VOL. 5**

Of a Survey on Section **25** T **4** R **14** E. of the 4 P. M. in **LIMA** Township

Rock County, Wisconsin, made **APRIL** the

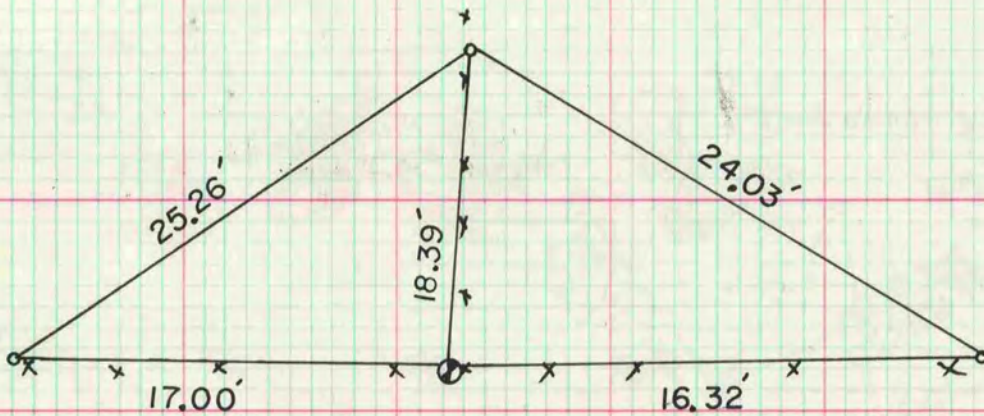
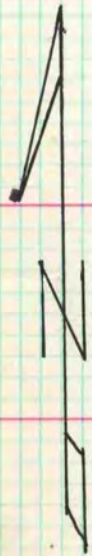
I hereby certify that the following is a correct record of said survey as made by me,

**COUNTY BUILDING  
CITY OF JANESVILLE**



## S <sup>1</sup>/<sub>4</sub> CORNER SECTION 25

DUG & FOUND 1 LARGE & 1 SMALL H.H. NEAR FENCE INTERSECTION.  
THIS WAS IN HARMONY WITH RUGER'S SURVEY, VOL 2 PG147.  
SET ALUM MON



o 1" X 24" IP

**MICROFILMED**