

# PLAT AND RECORD

COUNTY BUILDING  
CITY OF JANESVILLE

527

VOL. 5

Of a Survey on Section 17 T 4 R 10 E. of the 4 P. M. in UNION Township

Rock County, Wisconsin, made APRIL the 30 1979

I hereby certify that the following is a correct record of said survey as made by me.

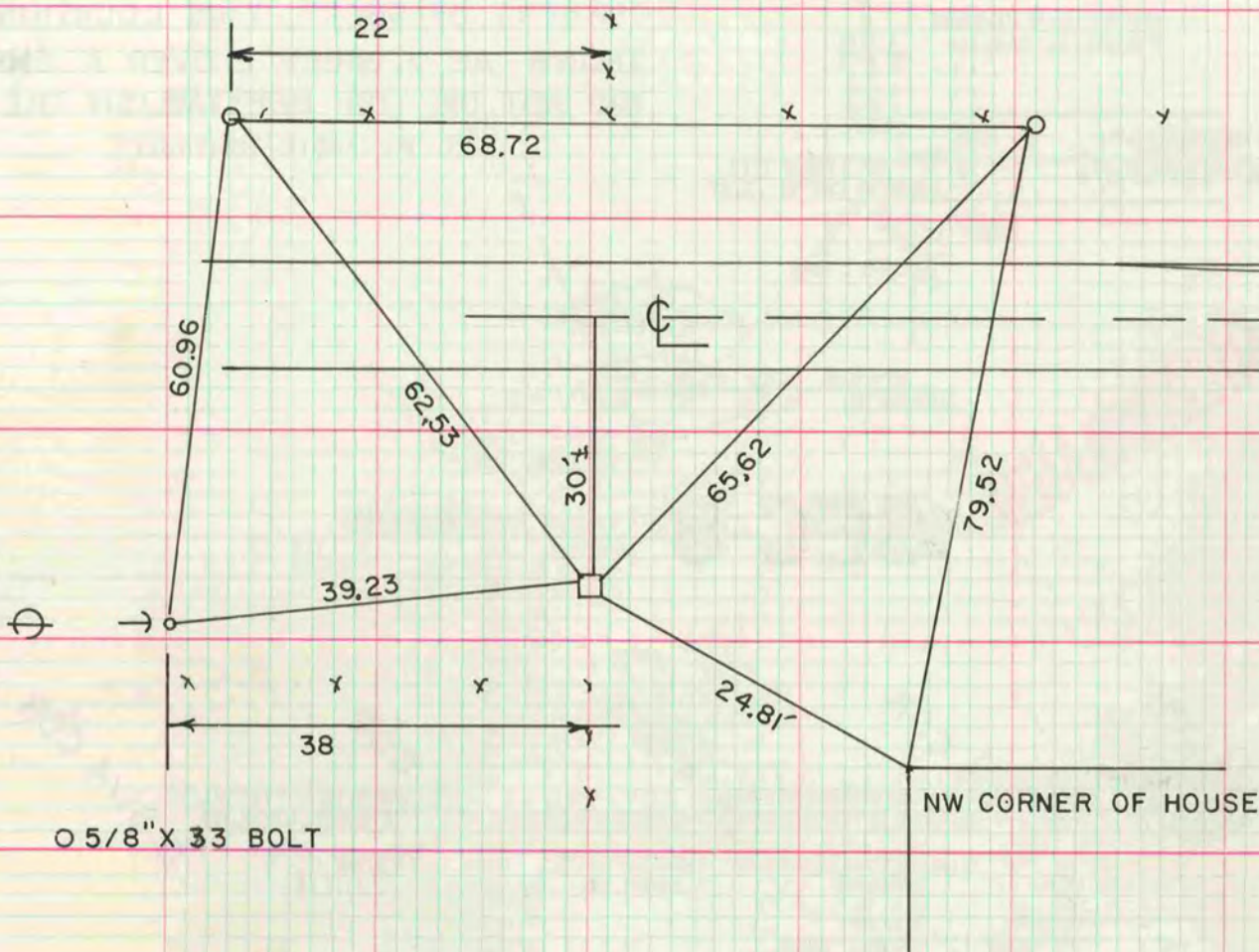
*Donald Barnes*

County Surveyor.



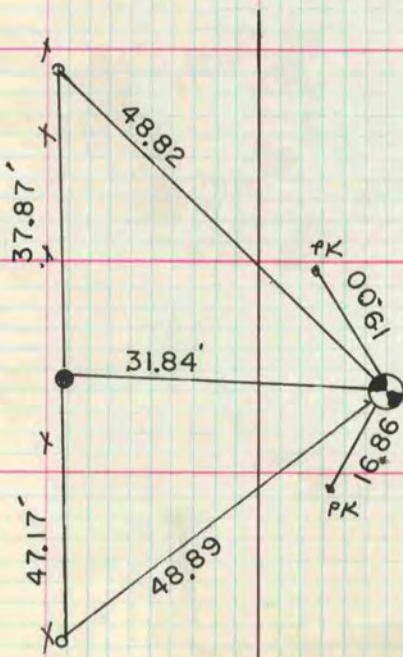
## N 1/4 COR SEC 17

FOUND CUT LIMESTONE. SET IP HORIZONTALLY ON S SIDE

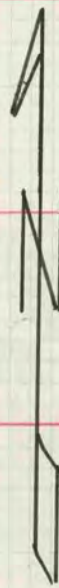


## W 1/4 COR SEC 17

FOUND CUT LIMESTONE 0.5' DEEP



MICROFILMED



O 5/8" X 33" BOLT  
• 1" X 24" IP