

PLAT AND RECORD

MICROFILMED

Of a Survey on Section 25 T 4 R 13 E. of the 4 P. M. in Milton Township

Rock County, Wisconsin, made August the 9th 10 1875

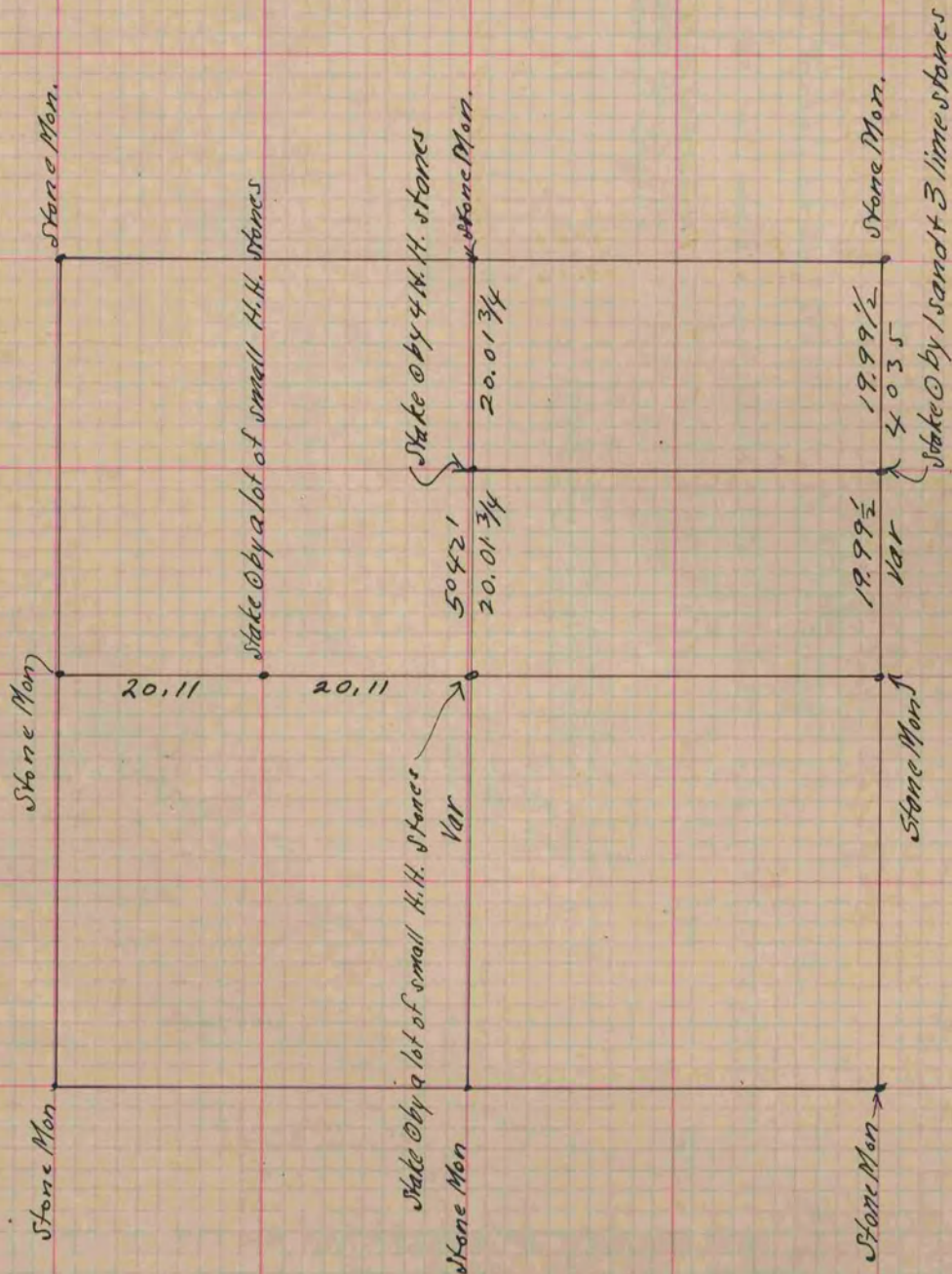
I hereby certify that the following is a correct record of said survey as made by me.

COUNTY BUILDING
CITY OF JANESVILLE

(Signed) Edward Ruger

R.H.B.

County Surveyor



Copied from P. 152 Vol. 2 County Surveyors Record