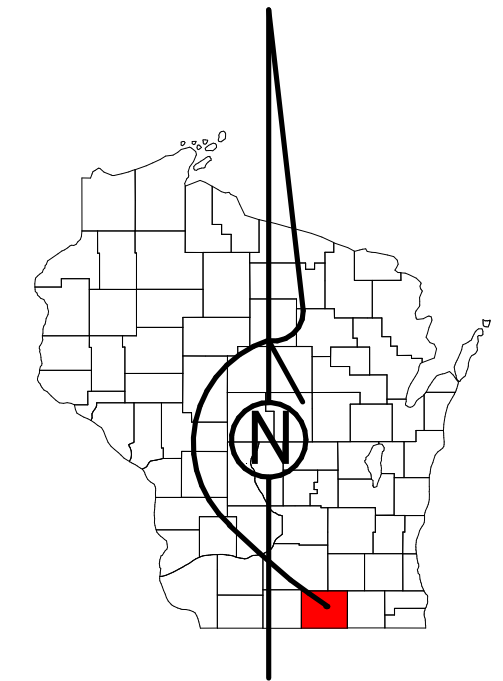


Property Division Map

Town
of
Harmony

T. 3 N. - R. 13 E.

Section 22 SW



STATE OF WISCONSIN
COUNTY OF ROCK

PREPARED BY

REAL PROPERTY DESCRIPTION
DEPARTMENT

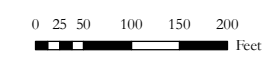
USING

ROCK COUNTY
GEOGRAPHIC INFORMATION SYSTEM

DUPLICATION OF THIS MAP PROHIBITED
WITHOUT THE WRITTEN CONSENT OF THE
REAL PROPERTY DESCRIPTION DEPARTMENT.

THIS MAP WAS PREPARED PURSUANT
TO SECTION 70.09 WIS. STATS.
USING PUBLIC RECORDS. IT IS NOT INTENDED
TO BE A SUBSTITUTE FOR AN
ACTUAL FIELD SURVEY
AND IS ADVISORY ONLY.

DISTANCES SHOWN ON THIS
MAP WERE PRODUCED BY
THE GIS SYSTEM AND ARE
FOR REFERENCE ONLY.
SEE DOCUMENT OF RECORD
FOR ACTUAL DISTANCE.

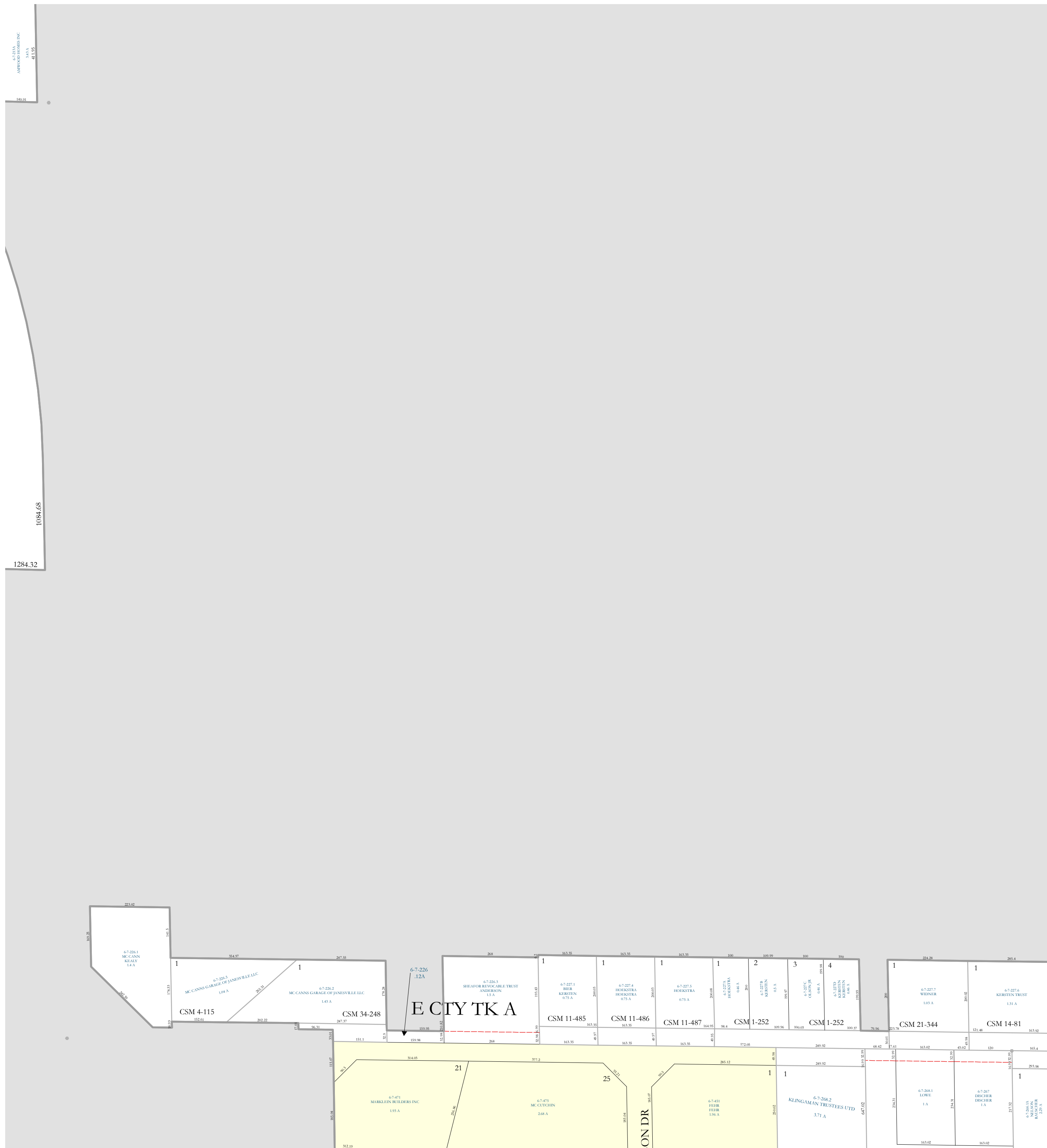


- | | | | |
|--|--------------------|--|--------------|
| | Gap | | MFL |
| | Overlap | | dam |
| | City of Milton | | easement |
| | City of Janesville | | hydro |
| | CSM | | lots |
| | CSMHYDRO | | parcels |
| | CSMLOT | | parcelshydro |
| | CSMLOTHYDRO | | roadwr |

See Pages

January 1, 2019

22 SW



21 SE

22 SE

27 NW