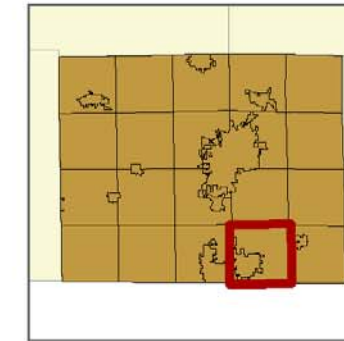
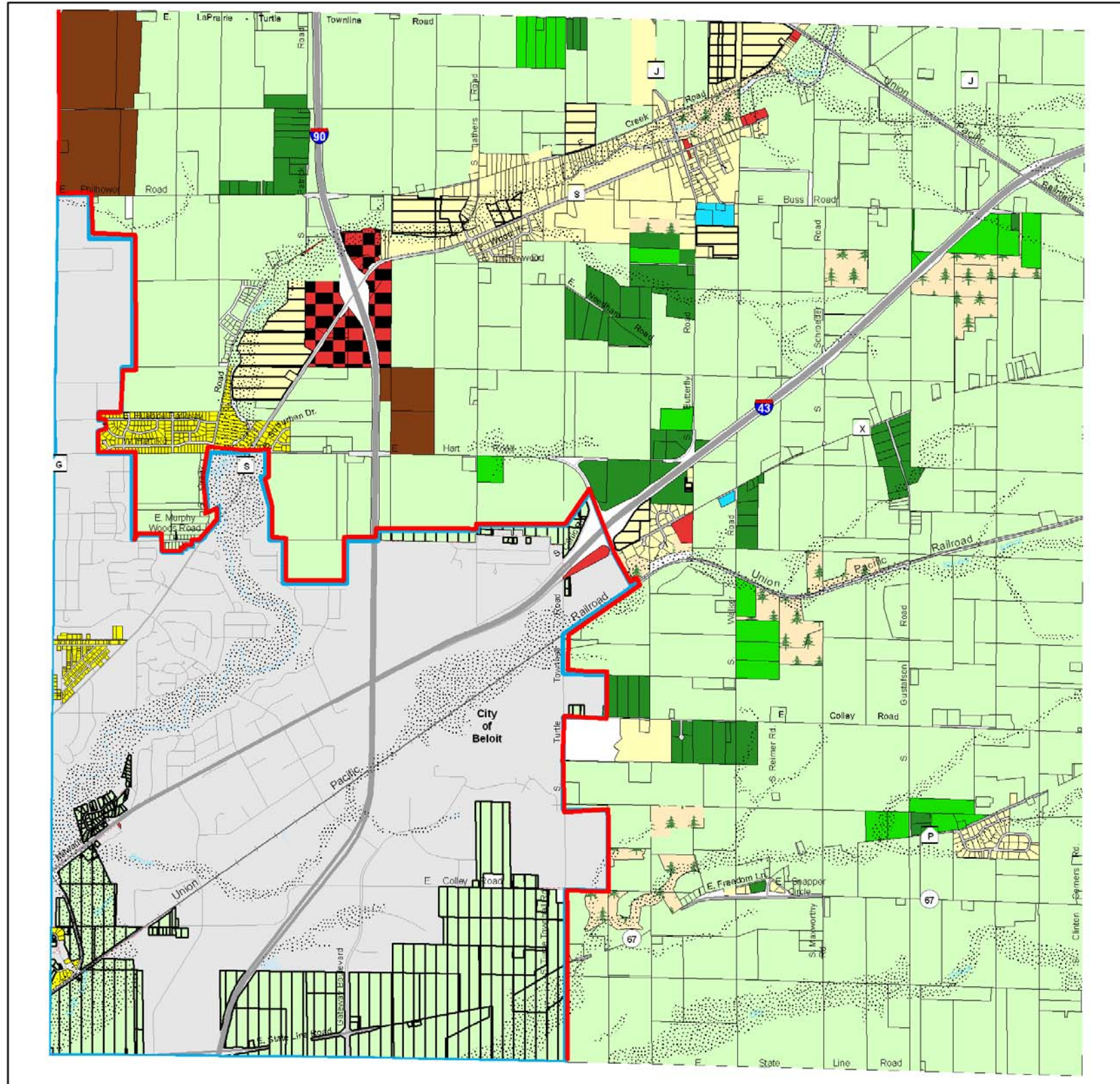
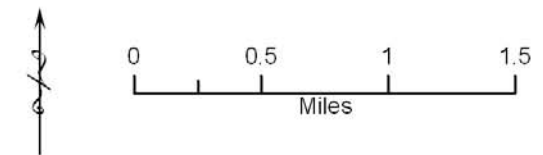


Official Zoning Map



Town of Turtle
Rock County, Wisconsin
2/26/2009

- Cooperative Boundary
- Sewer Service Area
- Zoning District**
- A1 - Exclusive Agriculture District
- A2 - General Agriculture Area
- A3 - Small Scale Agriculture Area
- RAT - Rural Agricultural Transition District
- UAT - Urban Agricultural Transition District
- RR - Rural Residential District
- R1 - Urban Residential District
- B1 - Local Commercial District
- CHI - Commercial Highway Interchange District
- M1 - Light Industrial District
- SP - Special Purpose District
- C2 - Highland Conservancy District
- C1 - Lowland Conservancy Overlay District
- Town Boundary Lines
- Streams and Rivers
- Rivers and Lakes
- Railroads
- Roads**
- Local Roads
- Interstate
- Highway
- County

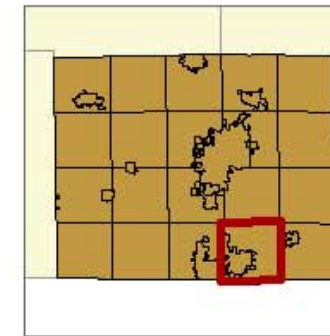
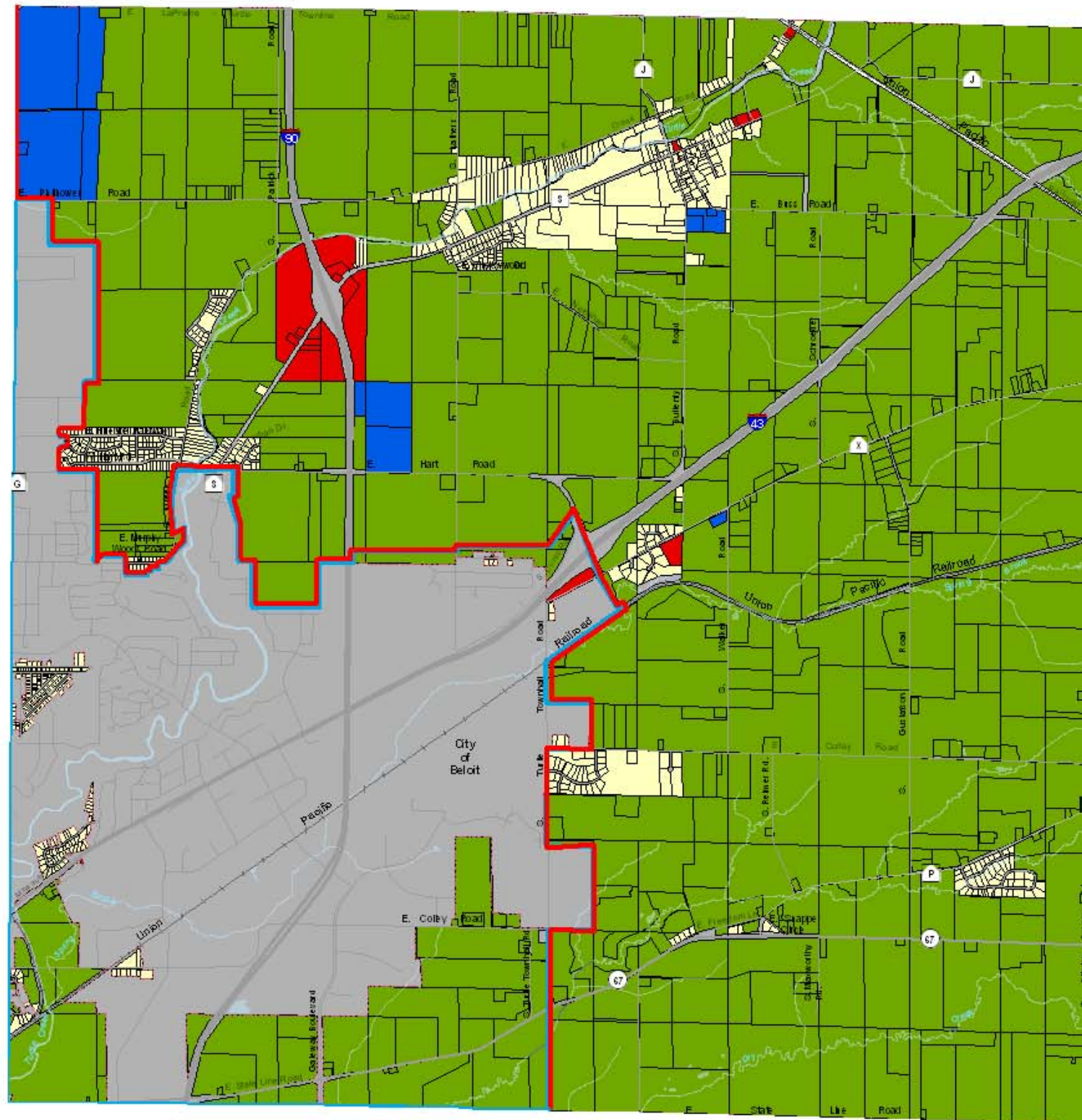


Duplication of this map is prohibited without written consent of the Rock County Planning, Economic and Community Development Agency. The data in this map was compiled using the Rock County Coordinate System. All graphic and attribute information is based on the Rock County Coordinate system. This map is not intended to be a substitute for an actual field survey and is an advisory reference only.

Rock County Geographic Information Systems (GIS)
Planning, Economic and Community Development Agency
51 S Main St, Janesville, WI 53545
(TEL) 608-757-5557, (FAX) 608-757-5586
email: Planning@co.rock.wi.us

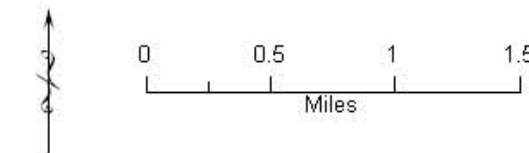
Data Sources: Rock County Planning and Development Agency

Current Land Use



Town of Turtle
Rock County, Wisconsin
06/2009

- Cooperative Boundary
- Sewer Service Area
- Land Use**
- Agriculture
- Residential
- Commercial
- Industrial/Special Purpose
- Unclassified
- Town Boundary Lines
- Streams and Rivers
- Rivers and Lakes
- Railroads
- Roads**
- Local Roads
- Interstate
- Highway
- County

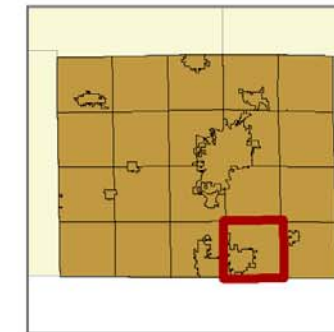
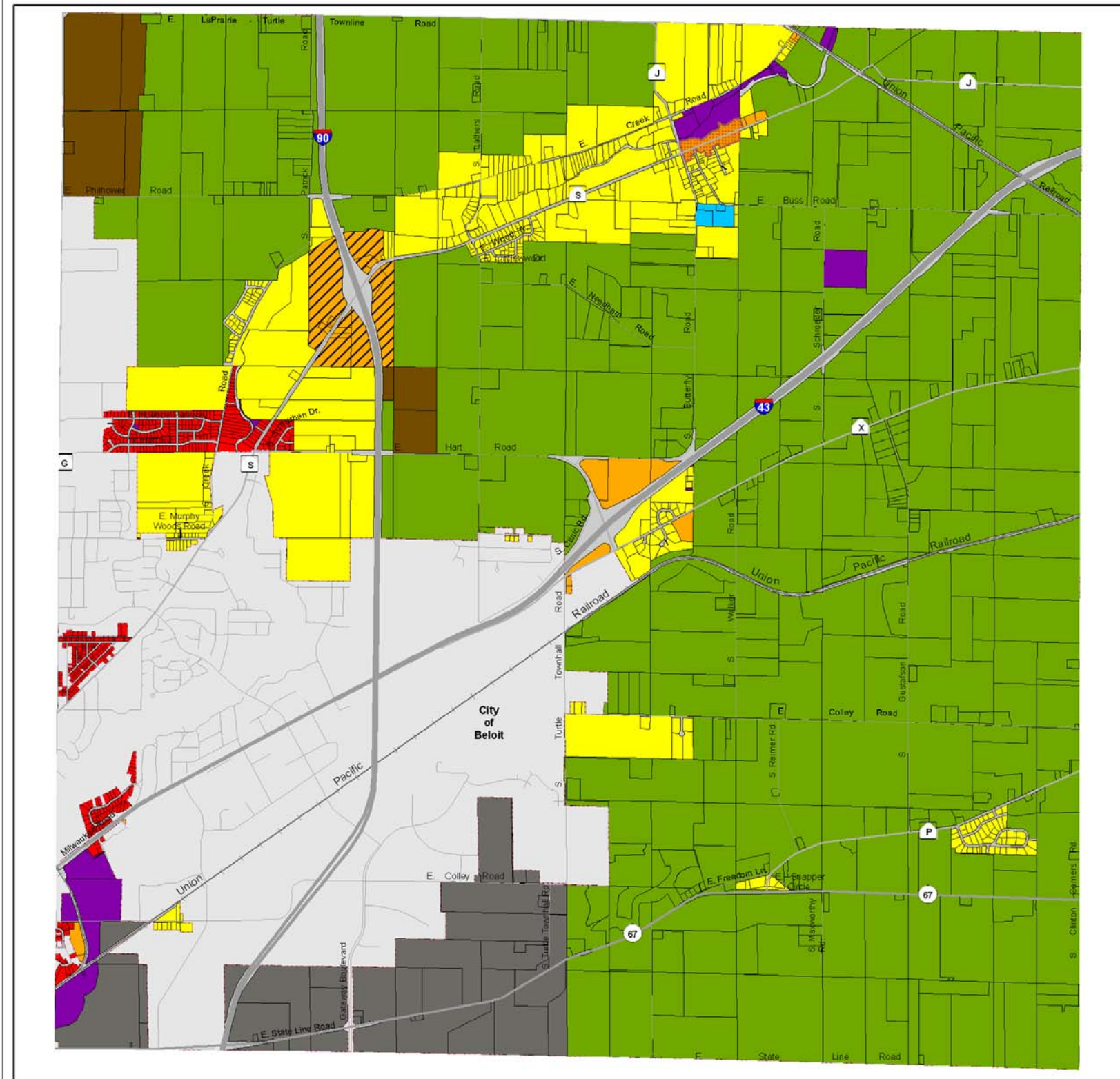


Disclaimer: This map is provided without, written consent of the Rock County Planning and Development Agency. This map is for informational purposes only and should not be used for any legal or financial purposes. This map is not intended to be a substitute for an actual field survey and is an advisory reference only.

Rock County Geographic Information System (GIS)
Planning, Economic and Community
Development Agency
Date printed: 06/2009
Map Scale: 1:50,000
Data Source: Rock County GIS

Data Sources: Rock County Planning and Development Agency

Land Use Plan



Town of Turtle
Rock County, Wisconsin
02/26/2009

Future Land Use

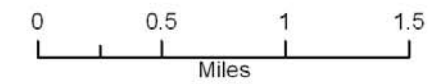
- Urban Expansion
- Agriculture
- Urban Residential
- Rural Residential
- Park/Open Space
- Industrial
- Town Center: Mixed Use
- Commercial
- Commercial Highway
- Special Purpose
- Right of Way

Town Boundary Lines

Railroads

Roads

- Local Roads
- Interstate
- Highway
- County



Duplication of this map is prohibited without written consent of the Rock County Planning, Economic and Community Development Agency. The data in this map was compiled using the Rock County Coordinate System. All graphic and attribute information is based on the Rock County Coordinate system. This map is not intended to be a substitute for an actual field survey and is an advisory reference only.

Rock County Geographic Information Systems (GIS)
Planning, Economic and Community
Development Agency
51 S Main St, Janesville, WI 53445
(TEL) 608-757-5587, (FAX) 608-757-5586
email: Planning@co.rock.wi.us

Data Sources: Rock County Planning and Development Agency