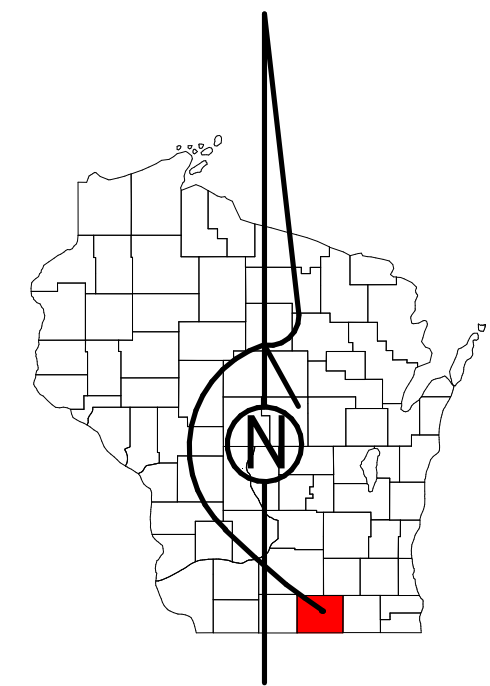


# Property Division Map

Town  
of  
Harmony

T. 3 N. - R. 13 E.

Section 27



STATE OF WISCONSIN  
COUNTY OF ROCK

PREPARED BY

**REAL PROPERTY DESCRIPTION  
DEPARTMENT**  
USING  
**ROCK COUNTY  
GEOGRAPHIC INFORMATION SYSTEM**

DUPLICATION OF THIS MAP PROHIBITED  
WITHOUT THE WRITTEN CONSENT OF THE  
REAL PROPERTY DESCRIPTION DEPARTMENT.

THIS MAP WAS PREPARED PURSUANT  
TO SECTION 70.09 WIS. STATS.  
USING PUBLIC RECORDS. IT IS NOT INTENDED  
TO BE A SUBSTITUTE FOR AN  
ACTUAL FIELD SURVEY  
AND IS ADVISORY ONLY.

DISTANCES SHOWN ON THIS  
MAP WERE PRODUCED BY  
THE GIS SYSTEM AND ARE  
FOR REFERENCE ONLY.  
SEE DOCUMENT OF RECORD  
FOR ACTUAL DISTANCE.

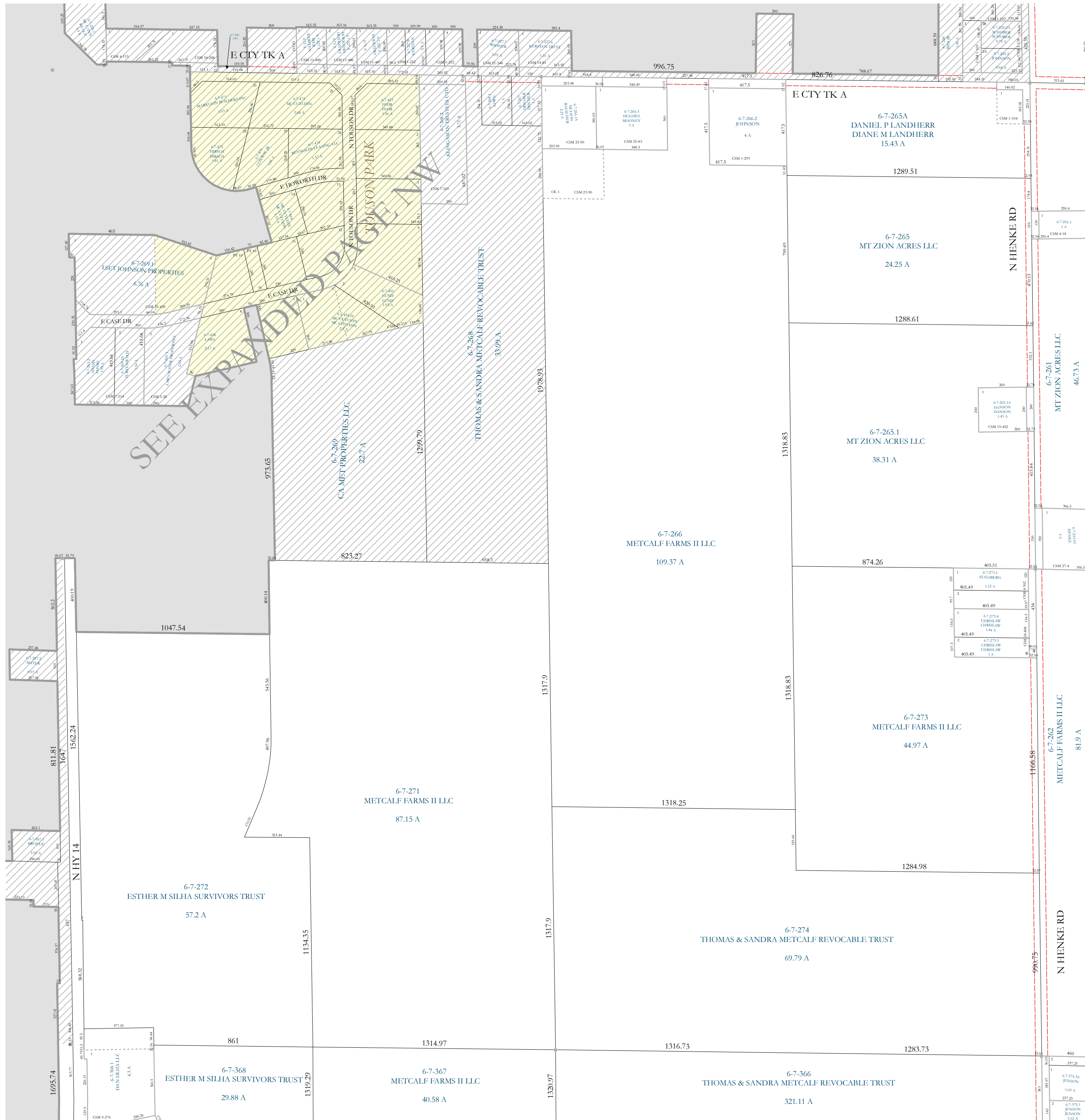
0 50 100 200 300 400  
Feet

- |  |                    |  |              |
|--|--------------------|--|--------------|
|  | Gap                |  | MFL          |
|  | Overlap            |  | dam          |
|  | City of Milton     |  | easement     |
|  | City of Janesville |  | hydro        |
|  | CSM                |  | lots         |
|  | CSMHYDRO           |  | parcels      |
|  | CSMLOT             |  | parcelshydro |
|  | CSMLOTHYDRO        |  | roadrw       |

See Pages

January 1, 2019

27



SEE EXPANDED PAGE NW

22

34

28

26